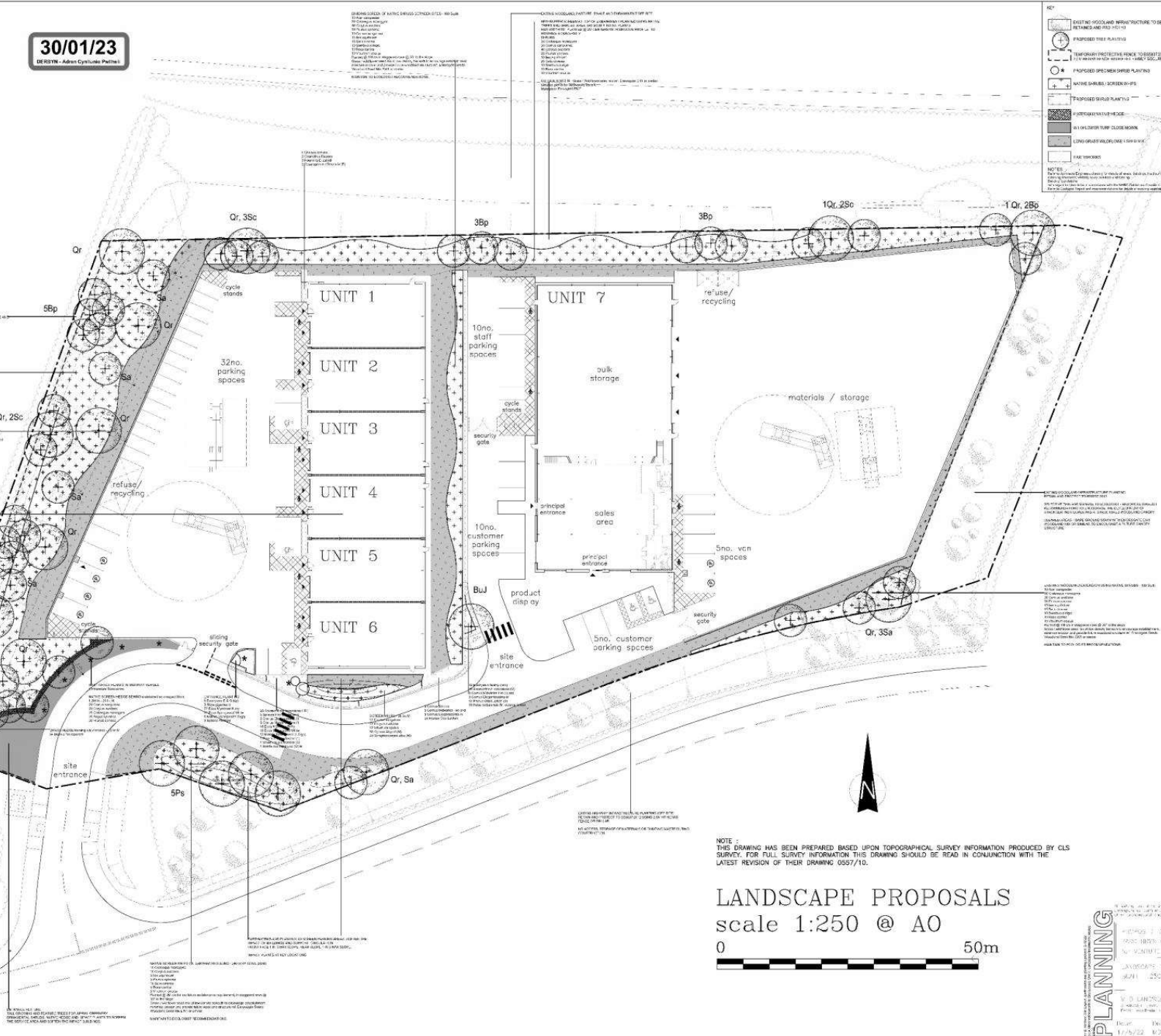


30/01/23
DERBYM - Adren Cystalline Panels

Item	Quantity	Unit	Notes
1.000	1.000	m ²	Grass
2.000	1.000	m ²	Gravel
3.000	1.000	m ²	Asphalt
4.000	1.000	m ²	Concrete
5.000	1.000	m ²	Brick
6.000	1.000	m ²	Stone
7.000	1.000	m ²	Wood
8.000	1.000	m ²	Plastic
9.000	1.000	m ²	Steel
10.000	1.000	m ²	Aluminum



KEY

- EXISTING HOODLAND INFRASTRUCTURE TO BE RETAINED AND NOT TO BE
- PROPOSED TREE PLANTING
- PROPOSED PROTECTIVE SCREEN TO BE INSTALLED TO PROTECT FROM VISUAL IMPACTS (SEE SCHEDULE 1)
- PROPOSED PROTECTIVE SCREEN PLANTING
- PROPOSED SHEDS / SCREENS / PILLS
- PROPOSED BUILD PLANTING
- PROPOSED OVERHEAD FENCE
- ALL LEVEL OVER TURF CLUSTERING
- LONG GRASS WOODLAND / GRASS WALK
- PAVED TERRACES

NOTES

1. ALL PLANTING IS TO BE INSTALLED IN ACCORDANCE WITH THE LATEST REVISIONS OF THE BS 5830:2012 CODE OF PRACTICE FOR THE DESIGN AND PLANTING OF TREES AND SHRUBS.

2. ALL PLANTING IS TO BE INSTALLED IN ACCORDANCE WITH THE LATEST REVISIONS OF THE BS 5830:2012 CODE OF PRACTICE FOR THE DESIGN AND PLANTING OF TREES AND SHRUBS.

3. ALL PLANTING IS TO BE INSTALLED IN ACCORDANCE WITH THE LATEST REVISIONS OF THE BS 5830:2012 CODE OF PRACTICE FOR THE DESIGN AND PLANTING OF TREES AND SHRUBS.

SCHEDULE 1 - PROPOSED PROTECTIVE SCREEN PLANTING

Item	Quantity	Unit	Notes
1.000	1.000	m ²	Grass
2.000	1.000	m ²	Gravel
3.000	1.000	m ²	Asphalt
4.000	1.000	m ²	Concrete
5.000	1.000	m ²	Brick
6.000	1.000	m ²	Stone
7.000	1.000	m ²	Wood
8.000	1.000	m ²	Plastic
9.000	1.000	m ²	Steel
10.000	1.000	m ²	Aluminum

SCHEDULE 2 - PROPOSED PROTECTIVE SCREEN PLANTING

Item	Quantity	Unit	Notes
1.000	1.000	m ²	Grass
2.000	1.000	m ²	Gravel
3.000	1.000	m ²	Asphalt
4.000	1.000	m ²	Concrete
5.000	1.000	m ²	Brick
6.000	1.000	m ²	Stone
7.000	1.000	m ²	Wood
8.000	1.000	m ²	Plastic
9.000	1.000	m ²	Steel
10.000	1.000	m ²	Aluminum

SCHEDULE 3 - PROPOSED PROTECTIVE SCREEN PLANTING

Item	Quantity	Unit	Notes
1.000	1.000	m ²	Grass
2.000	1.000	m ²	Gravel
3.000	1.000	m ²	Asphalt
4.000	1.000	m ²	Concrete
5.000	1.000	m ²	Brick
6.000	1.000	m ²	Stone
7.000	1.000	m ²	Wood
8.000	1.000	m ²	Plastic
9.000	1.000	m ²	Steel
10.000	1.000	m ²	Aluminum

SCHEDULE 4 - PROPOSED PROTECTIVE SCREEN PLANTING

Item	Quantity	Unit	Notes
1.000	1.000	m ²	Grass
2.000	1.000	m ²	Gravel
3.000	1.000	m ²	Asphalt
4.000	1.000	m ²	Concrete
5.000	1.000	m ²	Brick
6.000	1.000	m ²	Stone
7.000	1.000	m ²	Wood
8.000	1.000	m ²	Plastic
9.000	1.000	m ²	Steel
10.000	1.000	m ²	Aluminum

NOTE:
THIS DRAWING HAS BEEN PREPARED BASED UPON TOPOGRAPHICAL SURVEY INFORMATION PRODUCED BY CLS SURVEY. FOR FULL SURVEY INFORMATION THIS DRAWING SHOULD BE READ IN CONJUNCTION WITH THE LATEST REVISION OF THEIR DRAWING 0527/10.

LANDSCAPE PROPOSALS
scale 1:250 @ A0



PLANNING

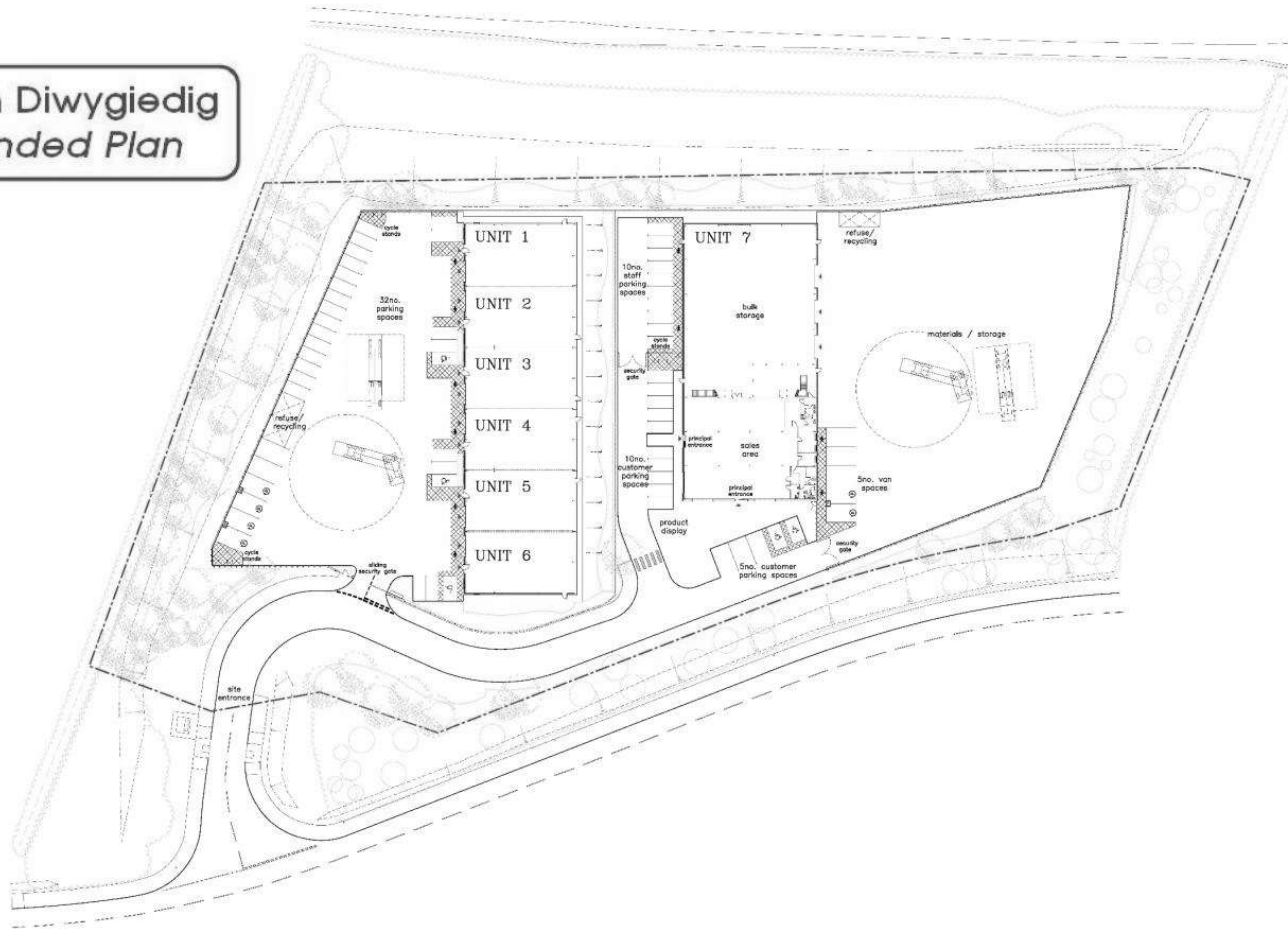
W & J LANDSCAPE ARCHITECTURE
17/7/22 2/23

278 PA 01B

13/03/23

DERBYN - Adran Cynllunio Pwllheli

Cynllun Diwygiedig
Amended Plan



SCHEDULE OF ACCOMODATION		
UNIT	sq. m	sq. ft.
UNIT 1	265	2,852
UNIT 2	260	2,788
UNIT 3	260	2,788
UNIT 4	260	2,798
UNIT 5	260	2,798
UNIT 6	265	2,852
UNIT 1-6 TOTAL	1,570	16,886
UNIT 7 (grd)	1,396	15,026
UNIT 7 (mezz)	594	6,394
UNIT 7 TOTAL	1,990	21,420
SITE TOTAL ACCOMODATION	3,560	38,316

UNIT 1-6 SITE:
Site area - 2.23 Acres / 0.9 Hectares
Car Parking - 32no. spaces

UNIT 7 SITE:
Site area - 2.22 Acres / 0.9 Hectares
Car Parking - 30no. spaces

TOTAL SITE:
Site area - 4.45 Acres / 1.8 Hectares
Car Parking - 62no. spaces

NOTE:
THIS DRAWING HAS BEEN PREPARED BASED UPON TOPOGRAPHICAL SURVEY INFORMATION PRODUCED BY OUR CLIENTS. FOR FULL SURVEY INFORMATION THIS DRAWING SHOULD BE READ IN CONJUNCTION WITH THE LATEST REVISION OF THEIR DRAWING D002/10/001.

PROPOSED SITE MASTER PLAN
scale 1:500



REVISION 1 - 13 MARCH 2023
A SET OF REVISED DIMENSIONS TO UNIT 7 AMENDED TO ADD A LAMP COLUMN TO THE EXISTING BULK STORAGE AREA TO ADD A NEW UNIT IN AREA OF THE ORIGINAL AND EXISTING PROVISIONS.

REVISION 2 - 24 FEBRUARY 2023
ADDITIONAL AREA IDENTIFIED FOR UNIT 7.

REVISION 3 - 5 DECEMBER 2022
REVISION OF UNIT 7 AREA TO ADD SITE ENTRY AND VEHICLE TRAILING SPACE FOR EXISTING PROVISIONS.

REVISION 4 - 18 AUGUST 2022
LOCATION OF UNIT 7 AMENDED TO SITE EXTENT OF MATERIALS YARD TO UNIT 7 AMENDED TO SOUTH EAST CORNER AND HELPING ST RUCKING HEIGHT ID.

REVISION 5 - 16 JUNE 2022
CHANGING DIMENSIONS TO UNITS 1-6 AVAILABLE TO DEVELOPERS WITH PROPOSED YARDS - AMENDED TO VEHICLE TRAILING CORRIDOR TO EXIST.

Do not base all setting out dimensions on the site confirmed prior to works commencing and any discrepancies confirmed to exist. This drawing is to be read in conjunction with all other documents and details of engineering drawings.

planning issue

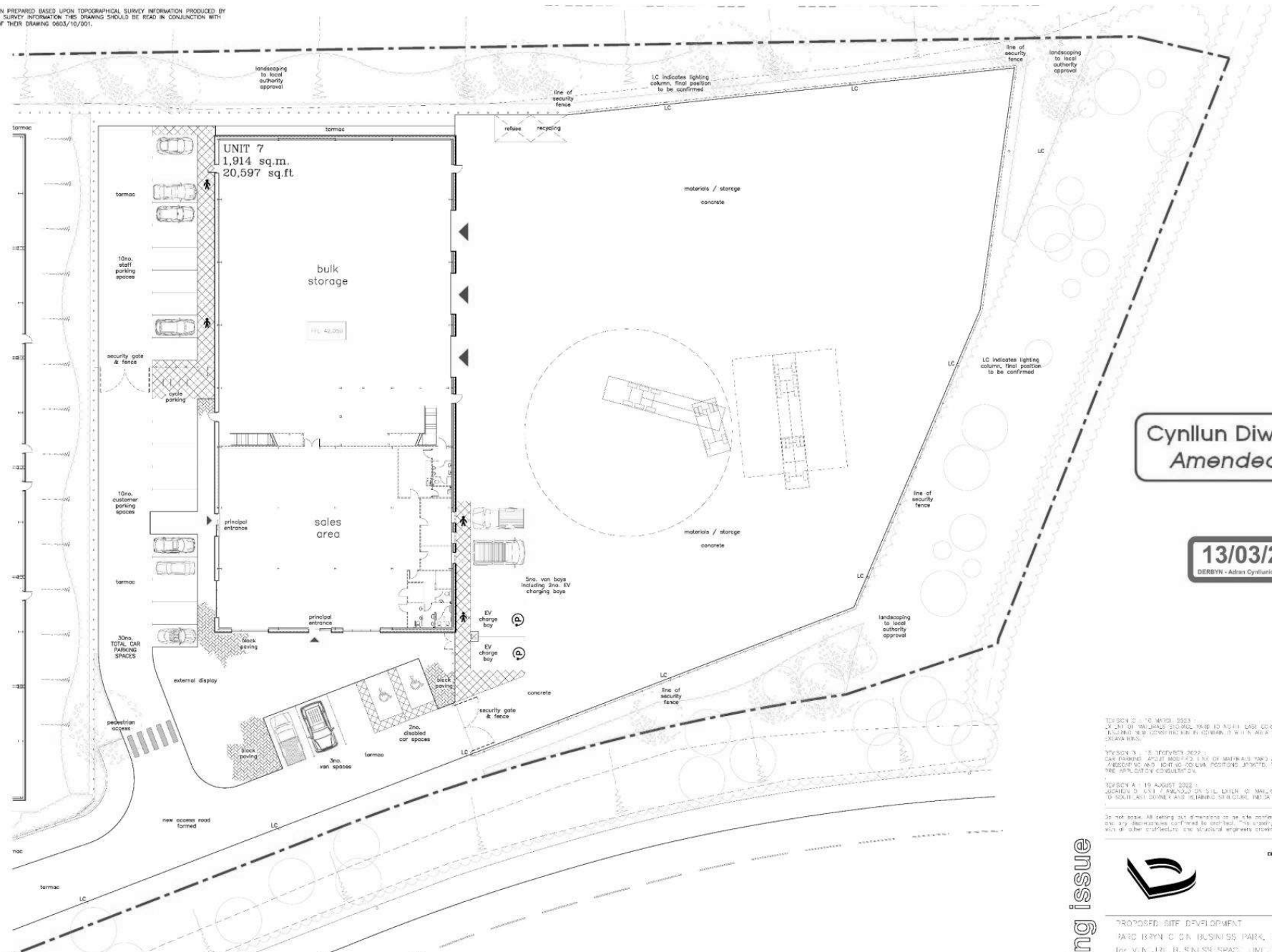


Dixon Dawson Chartered Architects
28 Kinnaird Park Road
Horse Edge
Buxford
SOT 1NF
T 0114 263388
E sheffield@dixondawson.co.uk

PROPOSED SITE DEVELOPMENT
7A TO 7D BRYN CLON BUSINESS PARK, BANCON
FOR V.L. J.R. BUSINESS SPACE UNIT 1-7
PROPOSED SITE MASTER PLAN
1:500/0A1

Date: 30/03/23
Drawn: Cheokao
AS
8713s/PA02E

NOTE : THIS DRAWING HAS BEEN PREPARED BASED UPON TOPOGRAPHICAL SURVEY INFORMATION PRODUCED BY C.L.S. SURVEY. FOR FULL SURVEY INFORMATION THIS DRAWING SHOULD BE READ IN CONJUNCTION WITH THE LATEST REVISION OF THEIR DRAWING 06/23/10/2021.



**Cynllun Diwygiedig
Amended Plan**

13/03/23
DERBYN - Adran Cynllunio Pethol

REVISION 1 - 10 MARCH 2023
 1. AS PART OF MATERIALS STORAGE YARD TO NORTH EAST CORNER OF UNIT 7, A NEW ACCESS ROAD TO BE FORMED TO THE EAST OF THE UNIT TO PROVIDE ACCESS TO THE STORAGE YARD.
 REVISION 2 - 15 FEBRUARY 2023
 1. AS PART OF MATERIALS STORAGE YARD AND SECURITY FENCE APPROVAL, PROPOSED NEW FENCE LINE TO BE FORMED TO THE EAST OF THE UNIT TO PROVIDE ACCESS TO THE STORAGE YARD.
 REVISION 3 - 19 AUGUST 2022
 1. CORRECTED UNIT 7 PLAN TO SHOW THE LINE OF MATERIALS STORAGE YARD TO BE FORMED TO THE SOUTH EAST CORNER OF THE UNIT.
 REVISION 4 - 19 AUGUST 2022
 1. CORRECTED UNIT 7 PLAN TO SHOW THE LINE OF MATERIALS STORAGE YARD TO BE FORMED TO THE SOUTH EAST CORNER OF THE UNIT.

Do not base all setting out dimensions on the site confirmed prior to works commencing and any discrepancies confirmed to exist. This drawing is to be read in conjunction with all other construction and scale of engineers drawings.

planning issue



Dixon Dawson Chartered Architects
 28 Kenwood Park Road
 Haver Edge
 Bradford
 BD7 1NF
 T 0114 2663968
 E sheffield@dixondawson.co.uk

PROPOSED SITE DEVELOPMENT
 PARK BRYN O'ON BUSINESS PARK, BANGOR
 FOR VLN JRL B, S'NLESS SPAC UNIT 7, U.C.

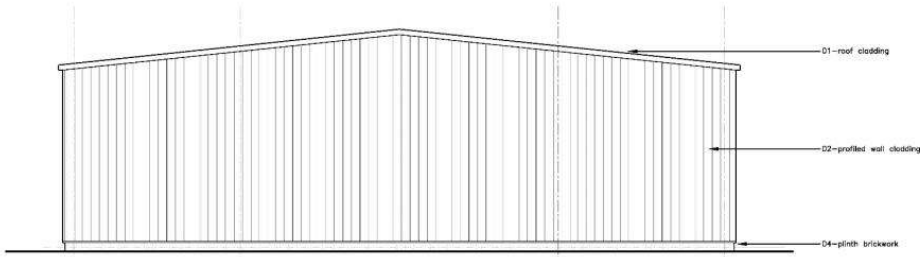
PROPOSED PART SITE LAYOUT
 1/23/03/21

Date: 14/04/22
 Drawn: Cheokao
 8713s/PA04C

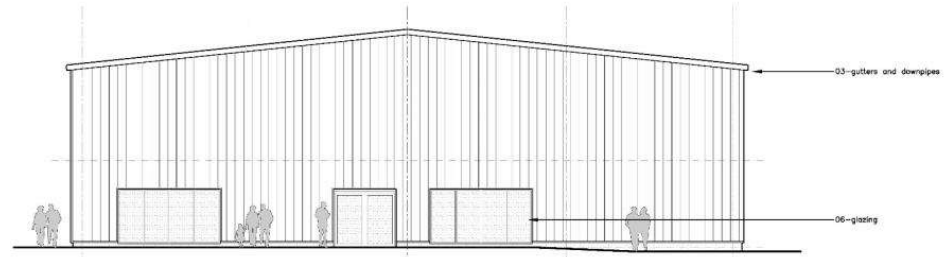
PROPOSED PART SITE LAYOUT
 scale 1:200



UNIT 7 SITE:
 Site Area - 2.22 Acres / 0.9 Hectares
 Car Parking - 30no. spaces

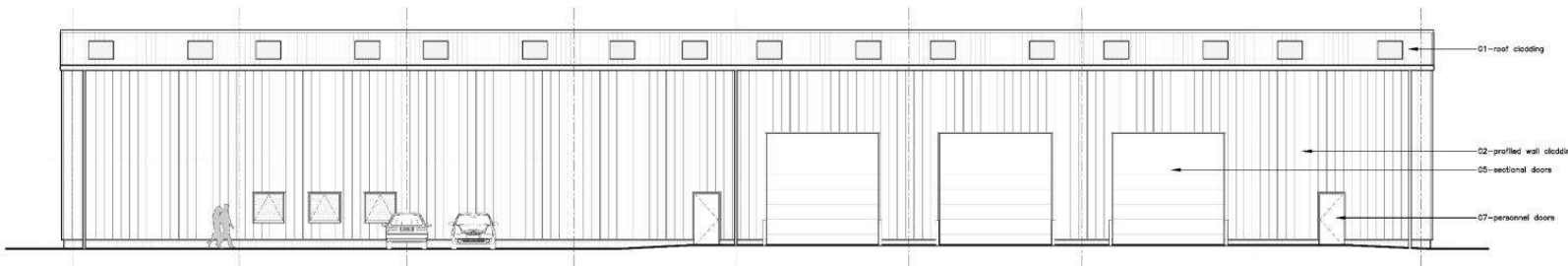


PROPOSED NORTH ELEVATION
scale 1:100



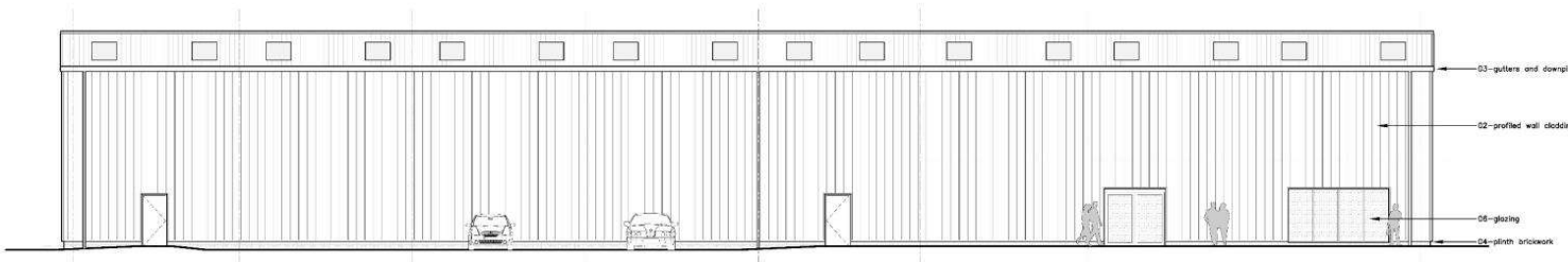
SOUTH ELEVATION

30/01/23
DERBYN - Adran Cynllunio Penrhil



EAST ELEVATION

- EXTERNAL MATERIALS
- 01 Kingapan KS 1000 RW trapezoidal profile composite insulated roof panels with XL Forte finish. Roof to include triple skin factory assembled non-fragile rooflights equivalent to 10% of the ground floor area. COLOUR: Gosseswing Grey BS 1040D.
 - 02 Kingapan KS1000RW vertically laid profiled composite wall cladding with XL Forte finish. COLOUR: Gosseswing Grey BS 1040D.
 - 03 Polyester powder coated, externally mounted 'rimline' profile aluminium gutter and matching square section rainwater downpipes. Colorcoat MP5200 Ultra finish. COLOUR: Merlin Grey BS 1892S.
 - 04 Fair faced brickwork Weineberger Terco Colders. COLOUR: Red Matt.
 - 05 Electrically operated, sectional, insulated goods doors with metal faced, factory finished panels. COLOUR: Merlin Grey BS 1892S.
 - 06 Polyester powder coated, dry gasket glazed, thermally broken aluminium framed glazing and associated doors. COLOUR: Merlin Grey BS 1892S.
 - 07 Proprietary steel doorset with factory finish. COLOUR: Merlin Grey BS 1892S.



WEST ELEVATION

REVISION A (15 SEPTEMBER 2022)
PLAN 01 CLADDING/WALLS/ROOF PANELS DRAWING ISSUE FOR THE APPLICATION UNDER ADO.

Do not base all setting out dimensions on the confirmed prior to works commencing and any discrepancies confirmed to contractor. This drawing is to be read in conjunction with all other construction site scale drawings.

planning issue



Dixon Dawson Chartered Architects
28 Kamead Park Road
Sutton Edge
Buckford
S7 1NF
T 0114 263388
E sheffield@dixon-dawson.co.uk

PROPOSED SITE DEVELOPMENT
7A TO 7D BRYN CLON BUSINESS PARK, BANCON
for V.L. J.R. BUSINESS SPACE LIMITED

UNIT 7
PROPOSED ELEVATIONS 11/06/21

Date: 16/06/22
Drawn: A8
Checked: A8
8713s/PA11A



