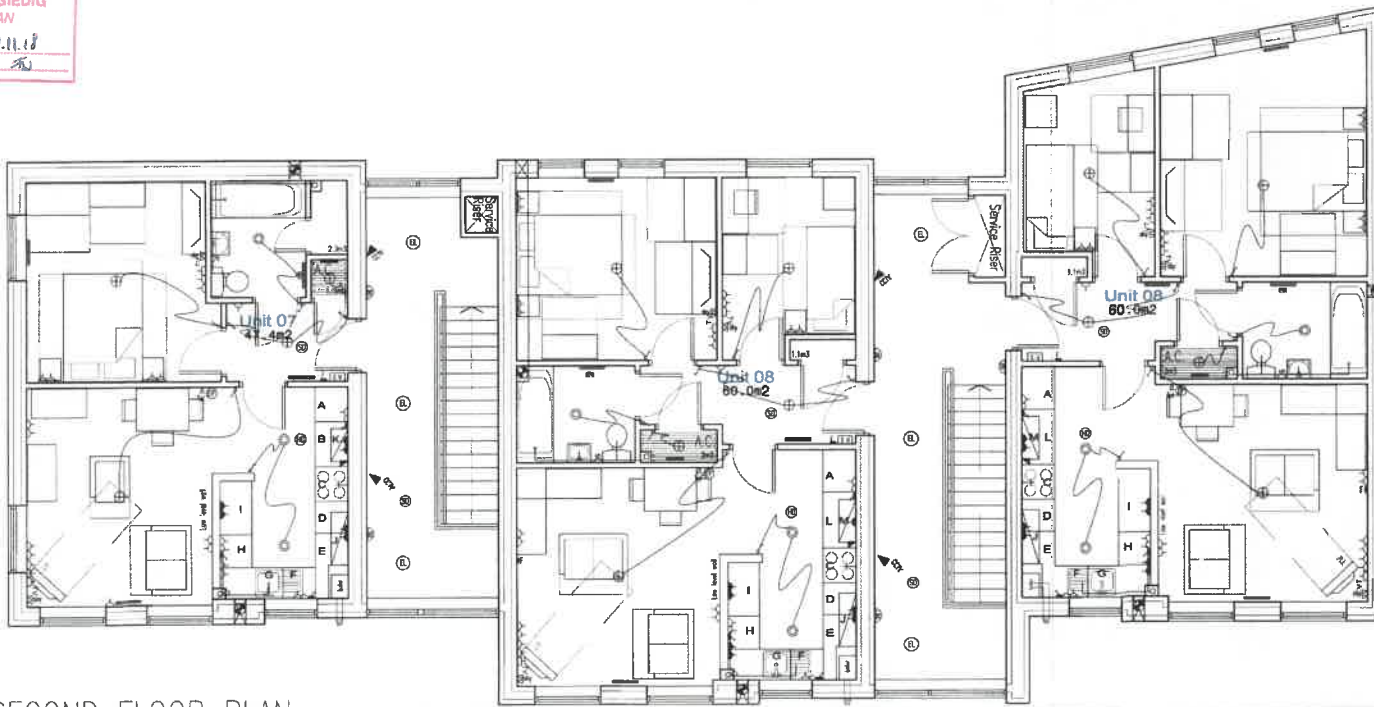


Revision		
Title Site Location Plan		
Project	Former Kwik Save site 271-273 High Street, Bangor, LL57 1UR	
Project No.	1872	01
Drawn By	KD	
Scale	1:1000	
Sheet No.	A3	

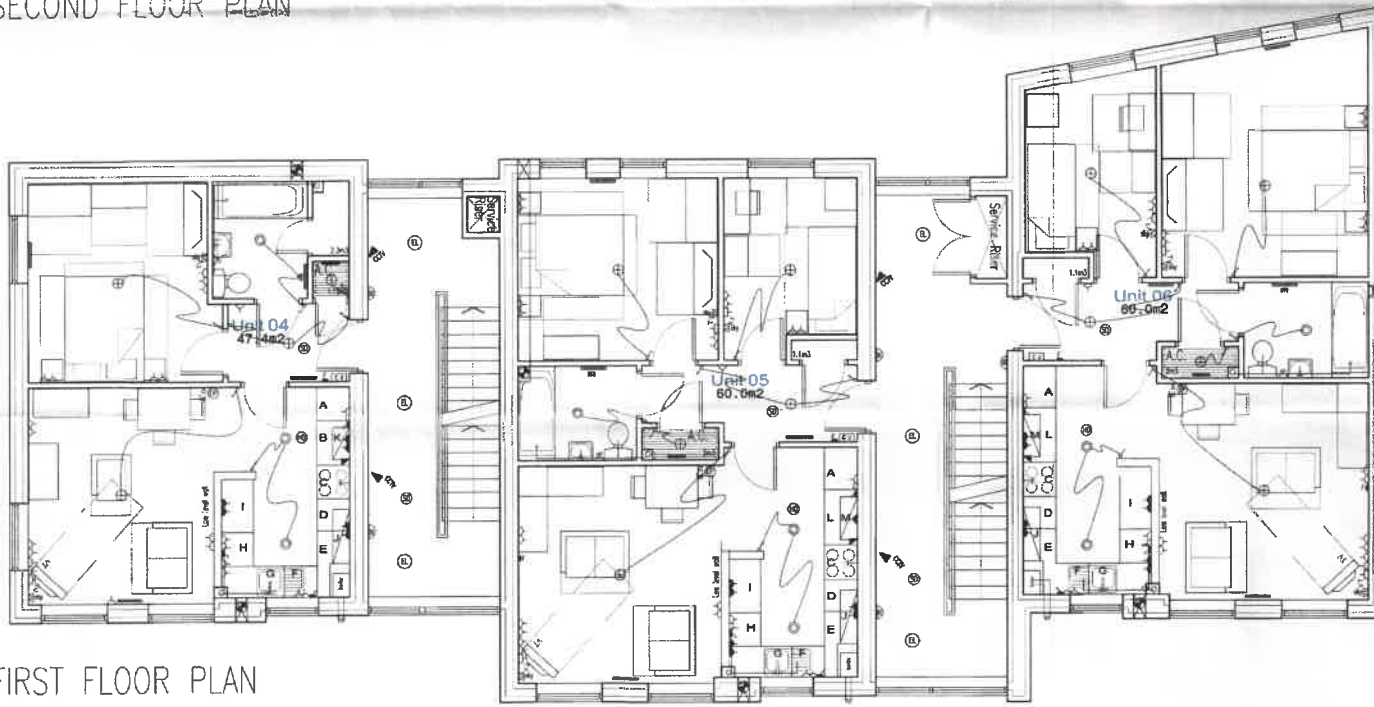
**CYNLLUN DIWYGIEDIG
REVISED PLAN**

Derbyniwyd/Received 29.11.18
Llofnod/signature *FMJ*





SECOND FLOOR PLAN



FIRST FLOOR PLAN

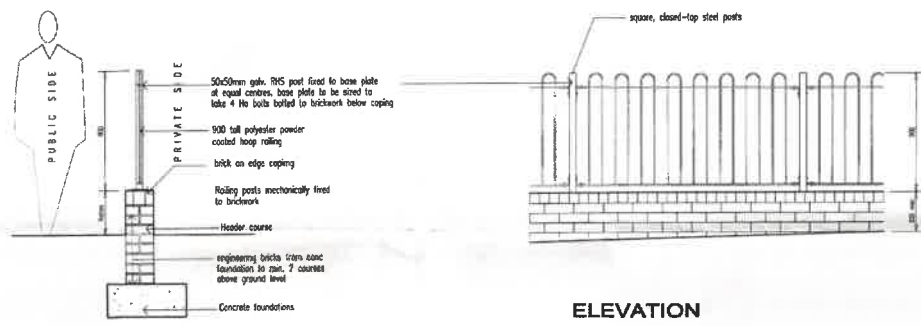
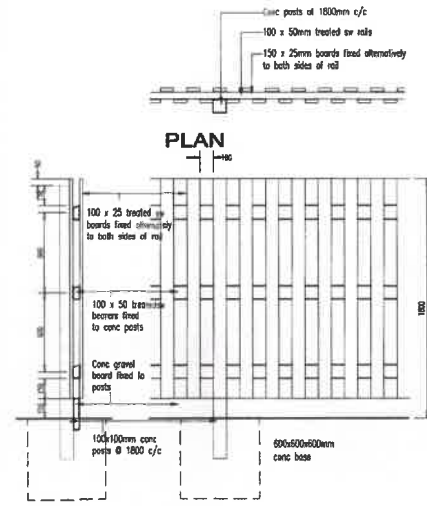
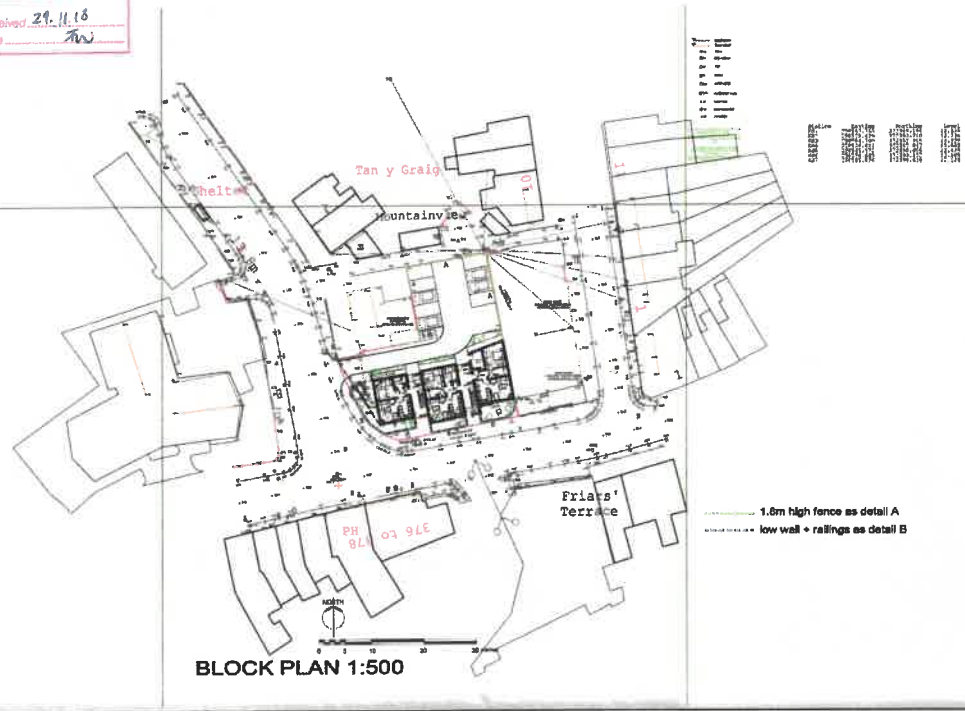
- ⊖ GAS METER
 - ⊖ WATER METER
 - ⊖ ELECTRIC METER
 - ⌘ One way pull cord light switch
 - ⌘ One way light switch
 - ⌘ Two way light switch
 - ⌘ 13A switched socket outlet
 - ⌘ Double 13A switched socket outlet
 - ⌘ Double 13A switched socket outlet above window
 - ⌘ Single 13A switched socket outlet
 - ⌘ Shaver point and light strip
 - ⌘ 13A non-fuse socket outlet associated to 13A switched socket outlet with zero down socket
 - ⌘ 13A non-fuse, 10-way socket outlet
 - ⌘ Telephone point
 - ⌘ Gas meter and high density HD3 treated soil. Top to be 1200mm above FFL with 450mm² bed, industry non-conductible encloses
 - ⊕ Extract fan (HWS to Bedroom and HWS to Kitchen) with back to bathroom Extract Fan
 - ⌘ Inhibition control point linked to communal alarm
 - ⌘ Sky/Sky/Day wired point linked to communal alarm
 - ⌘ 30A copper switch with zero down socket connected to meter socket plate
 - ⌘ Gas point
 - ⌘ 20/16A Thermostatic panel heater or tubular heater
 - ⌘ Pendant low-energy light fitting
 - ⌘ Insulated hot access hatch
 - ⊕ Ledless LED 10w tubular light fitting (apartments 400 lumens)
 - ⊕ Fire/smoke alarm connected to fire alarm on main exit door with and PR detector, to be secured by design + CSM requirements
 - ⊕ Mains wired smoke detector
 - ⊕ Mains wired heat detector with 10yr battery back-up
 - ⊕ Fused spur for future electric fire/burglar alarm
 - ⊕ Entry phone system
 - ⊕ Mini alarm clock mounted back + alarm siren with Mini Gas fitting kit with 1.75m hose + fitting over bath. Max Advance kit. Use thermocouple over shower tray
 - ⊕ Mains wired carbon monoxide detector
 - ⊕ Timer/Programmer for boiler
 - ⊕ Thermostat
 - ⊕ Energy display device on CSM requirements
 - ⊕ Unswitched lighting controlled by commoning emergency lighting to BS 5446
 - ⊕ Movement sensor for control of non-vented lights not or ceiling mounted
 - ⊕ CCTV system to client spec
 - ⊕ Bell push
 - ⊕ Bell monitor
 - ⊕ Specific system to specialist design to be installed throughout
 - ⊕ Cable tray in the bathroom
 - ⊕ All units to be completed to have 1000mm clear in front of the pan + 200mm clear to one side
 - ⊕ All units to be completed to be fit with wall space reserved to allow future fitting of radiators etc...
- MICRO LIVING**
- 200-250mm fridge freezer space
 - 80-100mm bench unit
 - 60-80mm cooker space
 - 60-80mm drawer base unit
 - 60-100mm corner basin unit
 - 60-80mm D-type space below sink/drawer
 - 60-55 sink inset + 600mm deep worktop with 100mm corner base unit below
 - 60-80mm washing machine space
 - 60-100mm bench unit
 - 60-100/120mm wall unit
 - 60-80/100mm wall unit
 - 60-100mm bench unit
 - 60-80/100mm wall unit
- A Redfiet enabling the Energy Efficiency labelling to be provided in each dwelling in the 'Home User Guide'
- Full storage is provided in store cupboards in the Hall. Lockable cupboards to be provided. Also in Bathrooms
- Supply + fit Sure Stop stopcock each lead to kitchen sink
- ⌘ Mains Supply (m) 1.25
 ⌘ Total Length of Electric (m) 5.44

Rev A - Floor plan shown against to Parts 3, 6, 9
 23.11.18

Revisions

First & Second Floor M&E Layout		Drawn: KD
Project: Former Kwik Save site	Sheet: 006	A1
371-373 High Street, Bangor, LL57 1UR		Scale: 1:50
Project No: 1872	Draw No: 102	Revision: A

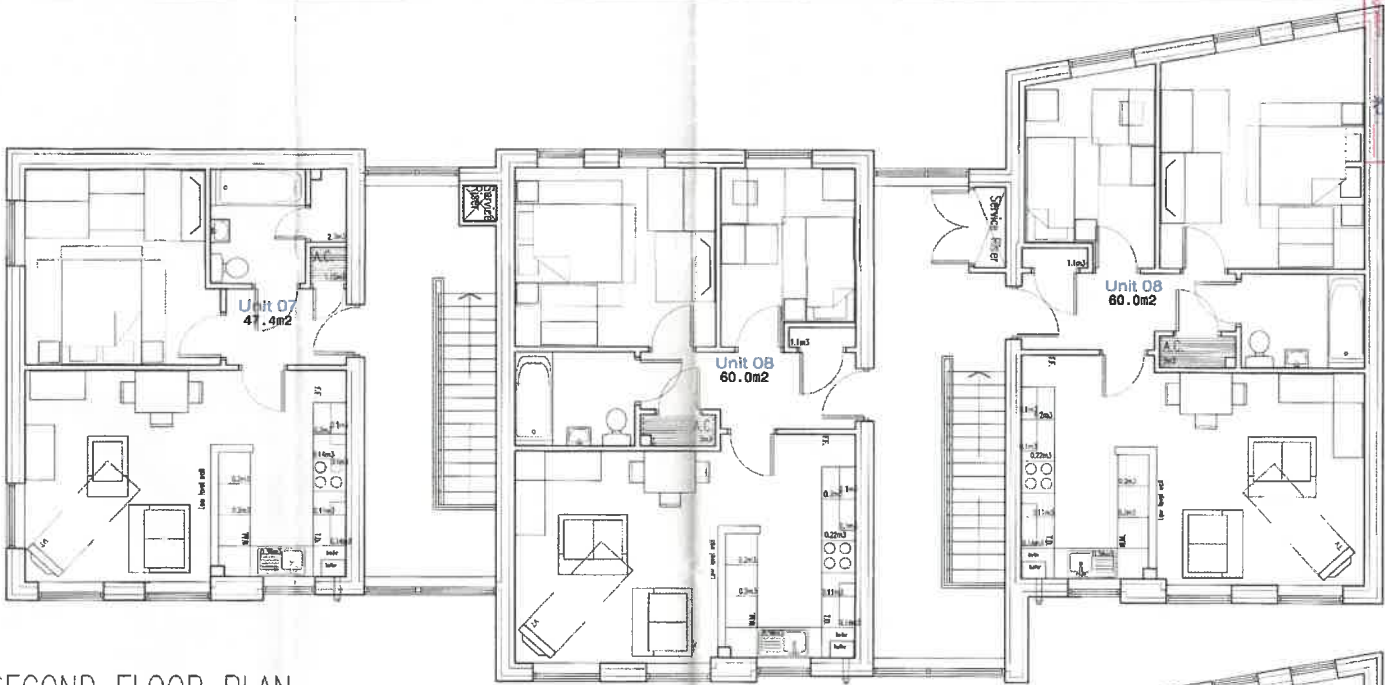
BYVA HQ, Alton House, 10 St Vincent Street, Liverpool L3 5DW
 Tel: 0151 705 81 21



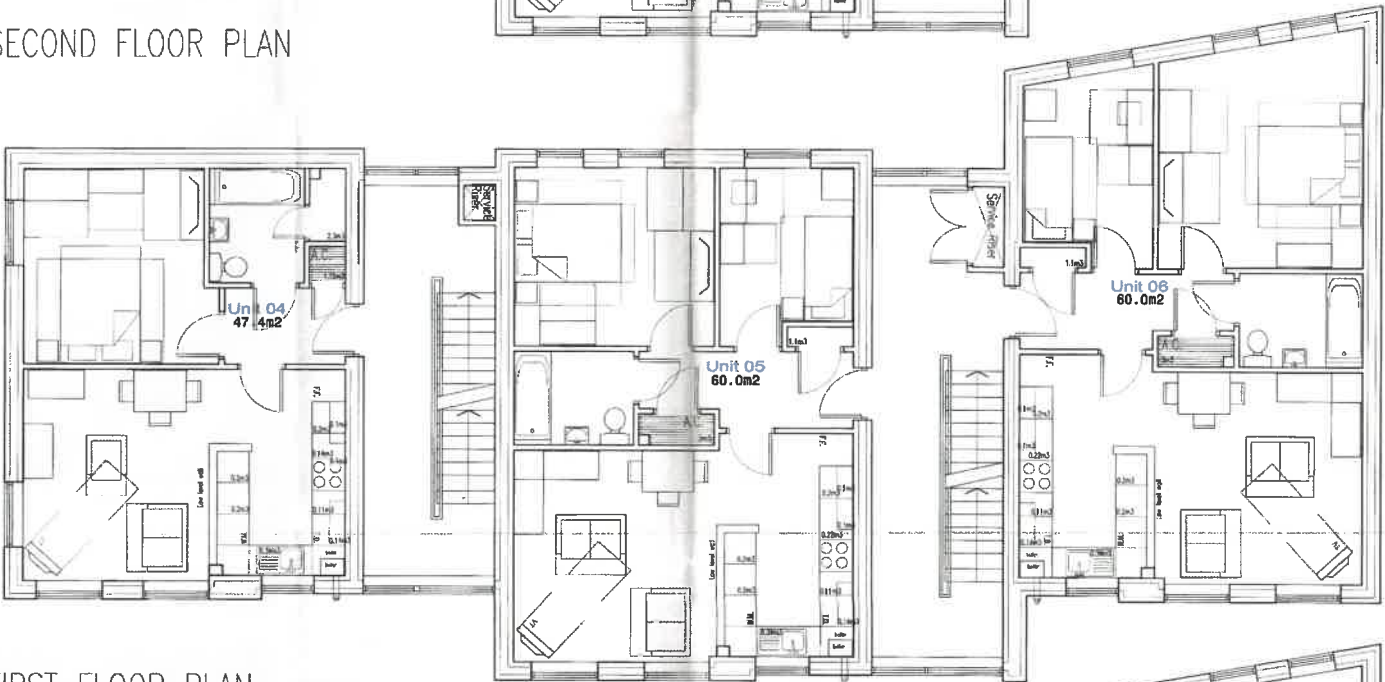
Rev A: Site works and ground floor window to Plot 1 re-installed 23.11.16
 Revisions

Title		Drawn	KD
Block Plan & Boundary Details		Sheet No	A1
Project		Scale	1:500/20
Former Kwik Save site 271-273 High Street, Bangor, LL57 1UR		Project No	1872
		Dwg No	108
		Revision	A

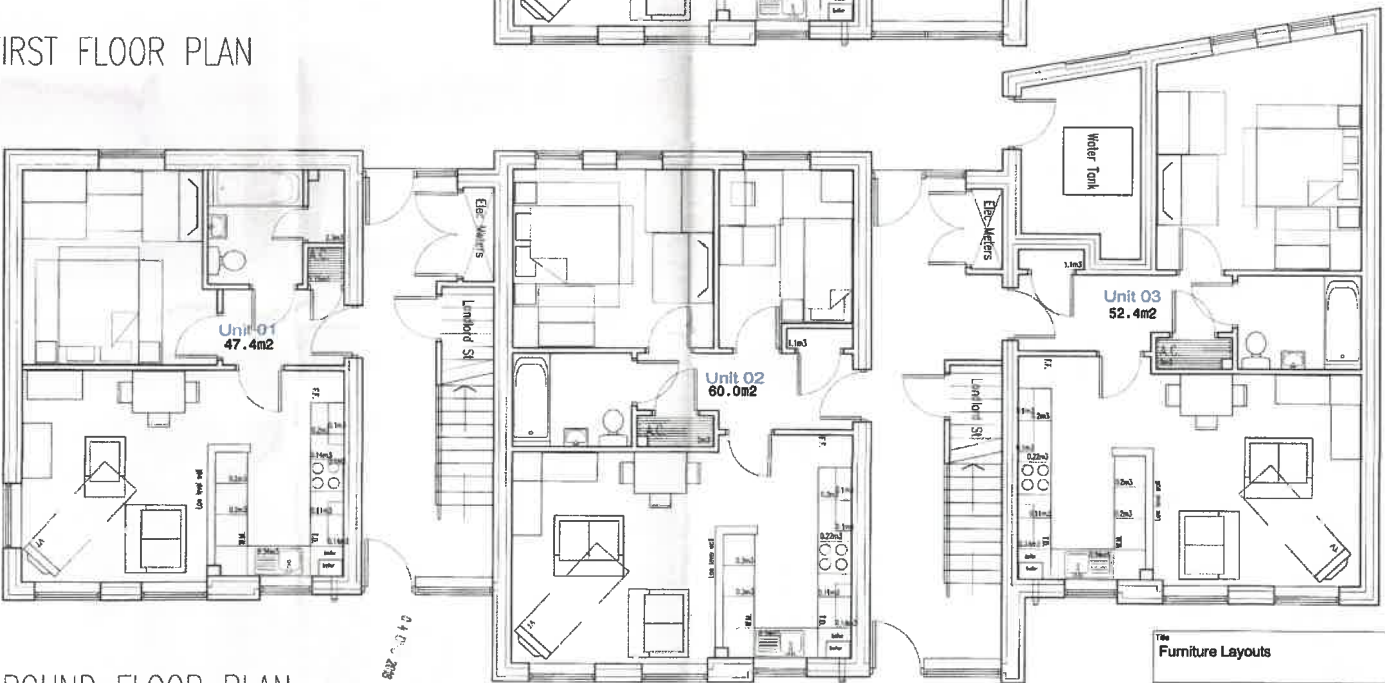
BYA Ltd, Arma House, 10 St Vincent Street, Llanfair 13, SWY, (Tel: 0151 768 81 21)



SECOND FLOOR PLAN



FIRST FLOOR PLAN



GROUND FLOOR PLAN

Title		Furniture Layouts	
Project	Former Kwik Save site	Drawn	JD
	371-373 High Street,	Checked	AI
	Bangor, LL57 1UR.	Scale	1:50
Project No	1872	Drawn No	104
		Revision	A

CYNLLUN DIWYGIEDIG
REVISED PLAN
 Derbyniwyd / Revisio: 24.11.18
 Llofnodwr / Drawn: PJ

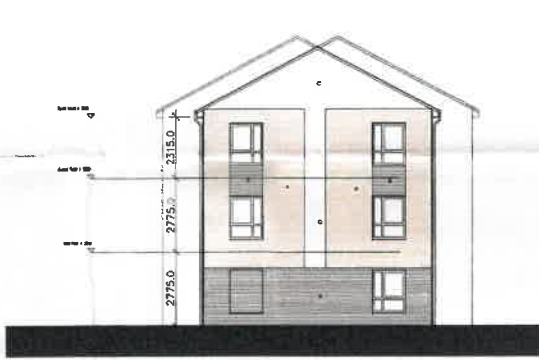


- A Buff facing brickwork
- B Grey/Blue facing brickwork
- C White render
- ^{BF} Boiler Flue

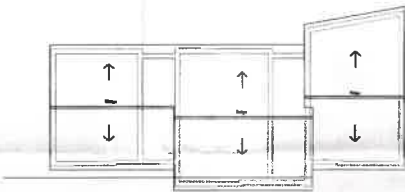
Front Elevation



Rear Elevation



Gable Elevation



ROOF PLAN

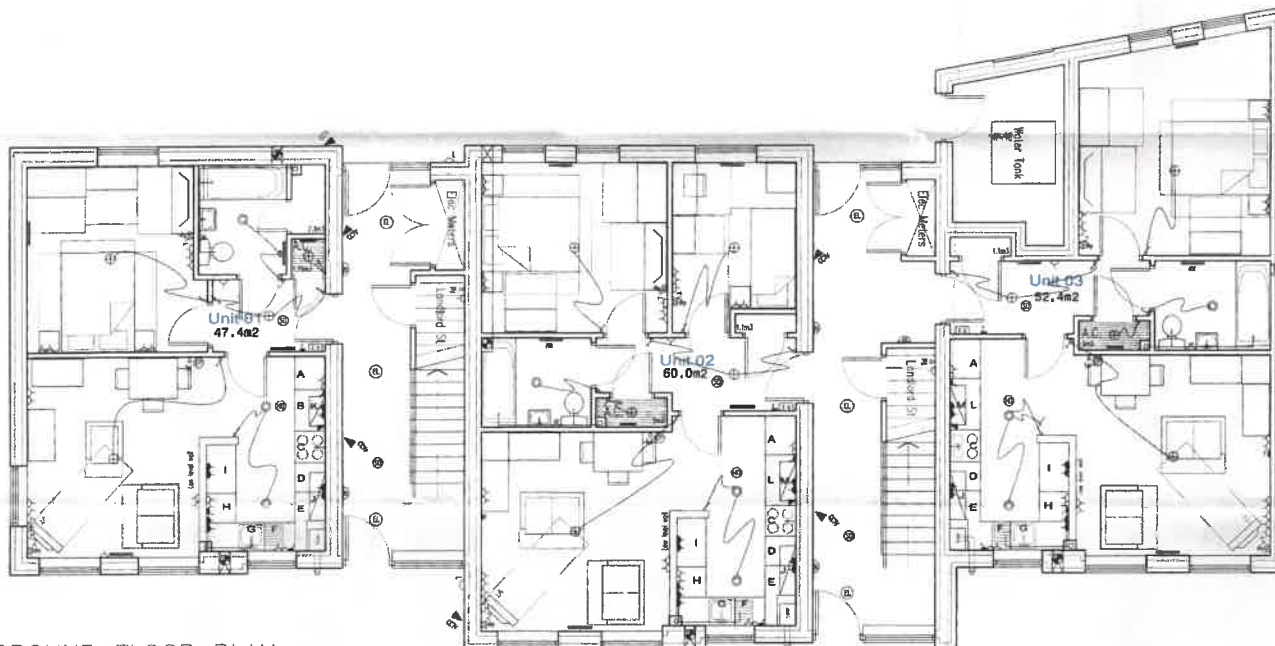
Rev A: Rear wall shown angled to Plans 5, 6, 9
 23.11.18

Title		
ELEVATIONS		
Project	Drawn	KD
Former Kwik Save site	Checked	AD
371-373 High Street,	Scale	1:100
Bangor, LL57 1UR	Revision	A
Project No	Dwg No	
1872	103	

BYA Ltd Alpha House, 10 St Vincent Street
 Liverpool L3 5EQ
 Tel: 0151 708 6121

CYNLLUN DIWYGIEDIG
REVISED PLAN

Derbyn/tyd/Received: 24.11.18
Llofnod/signature: *[Signature]*



GROUND FLOOR PLAN

- ① 25 METRE
- ② 3000 METRE
- ③ 60000 METRE
- ④ The way will show light valve
- ⑤ The way light valve
- ⑥ The way light valve
- ⑦ 1.5m radiated ceiling light
- ⑧ Double 1.5m radiated ceiling light
- ⑨ Double 1.5m radiated ceiling light above workshop
- ⑩ Single 1.5m radiated ceiling light
- ⑪ Double point one type stop
- ⑫ 1.5m radiated ceiling light covered in 1.5m radiated ceiling light with non-shower ceiling
- ⑬ Emergency, fire, security machine
- ⑭ fire machine (fire alarm) or other systems
- ⑮ City zone panel
- ⑯ Common and light intensity LED limited unit. Max to be 1200mm above FL with 200-grate top, including non-combustible enclosure
- ⑰ Cabinet fan (1/2/3) to be between and 50/50 to be below
- ⑱ Section panel panel fixed to common wall
- ⑲ 20k cable which will non-shower ceiling connected to other ceiling plate
- ⑳ The panel
- ㉑ Radiator - indicate size & position
- ㉒ Radiator panel with 600/600mm
- ㉓ 20/40/60mm diameter panel heater or radiator heater
- ㉔ Radiator low-voltage light fitting
- ㉕ Radiated left screen light
- ㉖ Radiator LED (the radiator light fitting requirements 100 lumens)
- ㉗ Half/full recessed internal light fitting on extra 600 lumens and 400 lumens, in recessed design + CEI requirements
- ㉘ Home control panel detector
- ㉙ Home control panel detector with fire battery back-up
- ㉚ Stand open for future electric fire/heater stove/
- ㉛ City zone system
- ㉜ City zone system with a show valve with New Era fitting at min 1.2m base & 400mm over top. New valves are the thermocouple near shower trays
- ㉝ Home control panel detector
- ㉞ Shower/pannure for shower
- ㉟ Showerhead
- ⓫ Shower depth shown as CEI requirements
- ⓬ Common fitting mounted to common and ceiling common and supplementary supplementary fitting in 90-90
- ⓭ CEI system for control & common light
- ⓮ CEI system in client space
- ⓯ Split panel
- ⓰ Split transfer
- ⓱ Splitter system to provide design to be installed throughout
- ⓲ Ceiling structure in the bathroom
- ⓳ Ceiling structure in the living area
- ⓴ Ceiling structure in the kitchen
- ⓵ Ceiling structure in the bedroom
- ⓶ CEI system in client space
- ⓷ CEI system in client space
- ⓸ CEI system in client space
- ⓹ CEI system in client space
- ⓺ CEI system in client space
- ⓻ CEI system in client space
- ⓼ CEI system in client space
- ⓽ CEI system in client space
- ⓾ CEI system in client space
- ⓿ CEI system in client space
- ⓿ CEI system in client space

01 DEC 2018

Rev A. Floor will shown on Plans 2, 3 & 4
Revisions

Title	
Ground Floor M&E Layout	
Former Kwik Save site 371-373 High Street, Bangor, LL57 1UR	
Project No	1872
Design No	101
Revision	A
Client	KD
Drawn	AT
Scale	1:50
<small>© J.A. & S. All rights reserved. © 2018 J.A. & S. All rights reserved. Lampson LS 5/09 Tel: 0151 706 8121</small>	