



# Anglesey and Gwynedd Community Partnership

**2015/16 Performance Update**

Matt Stewart  
4/15/2016

## Contents

The North Wales Community Safety Partnerships focus (NW CSP) .....	2
Victim Based Crime .....	3
Antisocial Behaviour .....	4
Domestic Abuse .....	5
Reoffending.....	6
Glossary.....	7
Appendix - Victim based crime .....	8
Appendix – Repeat victims of crime .....	9
Appendix – Acquisitive Crime .....	10
Appendix – Non Domestic Violent Crime .....	11
Appendix – High Risk Sexual Violence .....	12
Appendix – Antisocial Behaviour .....	13
Appendix – Repeat Victims of Antisocial Behaviour .....	14
Appendix – Domestic Violent Crime .....	15
Appendix – High Domestic Abuse Cases Discussed in MARAC.....	16
Appendix – Repeat Victims of Domestic Violence .....	17
Appendix – Adult Offending.....	18
Appendix – Youth Offending.....	19

## The North Wales Community Safety Partnerships focus (NW CSP)

Whilst the NW Safer Communities Board is focusing at a regional level on mental health, hidden crimes and technology enabled crimes, the Board is asking local CSP's to focus on:

### 1. Reduce crime and disorder in the area

*Having regard to the PCC objectives 'Prevent crime' and 'Reduce harm and the risk of harm'*

- Reduce victims based crime
- Reduce ASB
- Support vulnerable people to prevent them becoming victims of crime
- Reduce repeat incidents of victim based crime and ASB for victims of perpetrators
- Work with MARAC to manage the levels of repeat victims of Domestic Abuse
- Deal effectively with high risk cases of Domestic Abuse and Sexual Violence
- Increase awareness amongst young people of sexual violence

### 2. Reduce crime and disorder in the area

*Having regard to the PCC objective 'Reduce harm and the risk of harm' and the strategic risk 'Drug and Alcohol Misuse'*

- Reduce substance misuse

### 3. Reduce crime and disorder in the area

- Adult reoffending
- Children and young people reoffending

## Victim Based Crime

	2012/13	2013/14	2014/15	2015/16
<b>Gwynedd</b>				
Victim based crime	5116	5078	5081	5313
Repeat victims of crime	347	339	340	428
Acquisitive crime	2426	2422	2299	2109
Non domestic violent crime	1384	1371	1547	1787
High risk sexual violence	51	83	76	100
<b>Ynys Mon</b>				
Victim based crime	2331	2484	2340	2610
Repeat victims of crime	192	176	187	220
Acquisitive crime	1011	1133	931	920
Non domestic violence	674	639	745	963
High risk sexual violence	38	30	46	43

- Victim based crime has been stable in both counties since 2012 despite seasonal peaks during summer months; more so in Gwynedd. Anglesey is below average compared to its MSG<sup>1</sup> and anticipated to remain stable. Gwynedd is average compared to its MSG with a possible increase in the near future. The MSGs for both counties have experienced an increasing trend; therefore an increase in Anglesey or Gwynedd would not be unusual.
- Repeat victims<sup>2</sup> of crime have increased in both Anglesey and Gwynedd in 2015/16. The increase in Anglesey came about in the early part of 2015/16 which has now stabilised while in Gwynedd the increase has continued. The increase in repeat victims has been a trend seen across North Wales and is linked to an increase in reported violent crime.
- Acquisitive crime (all theft offences) has reduced in both Anglesey and Gwynedd and is currently stable. Both counties have a low level of acquisitive crime compared to their MSGs.
- Non domestic violent crime<sup>3</sup> mostly occurs in public spaces however some occurs within dwellings. In 2014 non domestic violent crime increased in both counties and remained stable until the latter part of 2015/16 where signals indicate a possible increase in the coming months.
- High risk sexual violence<sup>4</sup> has remained stable in Anglesey since 2012 with some peaks due to historical reporting. Anglesey is average when compared to its MSG and expected to remain stable. Gwynedd experienced an increase in reports from July 2015 onwards which has subsequently reduced. This increase does not appear to be linked to the student community. Gwynedd is high compared to its MSG and projections indicate a further increase in 2016/17.

<sup>1</sup> MSG – Most similar group, see Glossary.

<sup>2</sup> Repeat victims are people who have been a victim of crime two or more times in 12 months.

<sup>3</sup> All violent crime where the relationship between the victim and offender is **not** deemed to be domestic in nature.

<sup>4</sup> Rape and penetrative offences, therefore excluding offences such as indecent exposure.

## Antisocial Behaviour

	2012/13	2013/14	2014/15	2015/16
<b>Gwynedd</b>				
Antisocial Behaviour	4474	4371	3663	3470
Repeat victims of Personal ASB	85	78	62	59
<b>Ynys Mon</b>				
Antisocial Behaviour	1992	1989	1754	1634
Repeat victims of Personal ASB	33	50	49	35

- Antisocial behaviour reported to North Wales Police has reduced in both Gwynedd and Anglesey since 2012. Reporting is highly seasonal with nearly double the number of incidents reported during summer months when compared to winter months. Projections suggest further reductions in 2016/17 however an increase is anticipated in the early part of 2016/17 due to the seasonal trend.
- Personal antisocial behaviour is antisocial behaviour that is targeted at an individual or group as oppose the community at large. Each report of personal antisocial behaviour is followed up by a risk assessment of the victim. Repeat victims are people who have been a victim of personal ASB two or more times in 12 months. The number of repeat victims has reduced since the introduction of recording in April 2013 in both counties, with recent signals indicating possible further reductions.

## Domestic Abuse

	2012/13	2013/14	2014/15	2015/16
<b>Gwynedd</b>				
Domestic violent crime	529	445	451	586
High risk cases discussed in MARAC	182	220	149	164
Repeat victims of domestic violence	57	38	50	49
<b>Ynys Mon</b>				
Domestic violent crime	274	239	275	331
High risk cases discussed in MARAC	110	137	107	87
Repeat victims of domestic violence	22	21	29	28

- Domestic violence includes all violent crime which has been tagged a domestic due to the relationship between the victim and offender. Reports of domestic violent crime in both Anglesey and Gwynedd have increased since 2012 and more notably during the last 2 years. It has always been recognised that domestic violence is underreported therefore improved training of frontline staff and information sharing between partner agencies are likely to have increased reporting. Further planned improvements in information sharing may result in further increases in reporting which is likely to impact of services.
- The number of high risk cases discussed in MARAC<sup>5</sup> reduced in Gwynedd in 2014 and Anglesey in 2015. This is partly due to the introduction of a screening process to ensure cases meet the appropriate threshold. No significant increase in MARAC cases combined with an increase in reported domestic violence suggests that high risk cases have been consistently identified over time.
- Repeat victims of domestic violence are people who have been a victim of two or more crimes in 12 months. Repeat victims of domestic violence have increased in both counties since 2012. Anglesey and Gwynedd saw an increase in repeat victims during the summer months in 2015/16 followed by a decline in during the winter. At present it unclear as to why this is however further analysis is planned. It is anticipated that the number of repeat domestic victims will remain stable.

---

<sup>5</sup> Multi agency risk assessment conference (MARAC) – Monthly multi agency meeting to discuss high risk / repeat cases of domestic abuse.

## Reoffending

	2012/13	2013/14	2014/15	2015/16
<b>Gwynedd</b>				
Adult reoffending	313	310	316	300
Young people reoffending	63	43	28	20
<b>Ynys Mon</b>				
Adult reoffending	143	150	126	147
Young people reoffending	28	22	13	19

- Repeat adult offenders are individuals age 18 and over who have been charged or cautioned for two or more crimes in 12 months. Adult reoffending has slowly reduced in both Anglesey and Gwynedd since 2012, however there has been a recent increase in Anglesey in the latter part of 2015/16.
- Repeat youth offenders are individuals under 17 who have been charged or cautioned for two or more crimes in 12 months. Youth reoffending has reduced significantly in Gwynedd since 2012, with only a third of the offenders in 2015/16. Anglesey has also seen positive decline in youth reoffending however an increase in the latter part of 2015/16 result in a YTD increase. Reductions in youth reoffending are the result of avoiding criminalising young people for minor offences such as shoplifting and criminal damage and instead using alternative disposals as recommended.

## Glossary

**Victim based crime** – Victim based crime includes all police recorded crimes where there is a direct victim. This victim could be an individual, an organisation or corporate body. This category includes violent crimes directed at a particular individual or individuals, sexual offences, robbery, theft offences (including burglary and vehicle offences), criminal damage and arson.

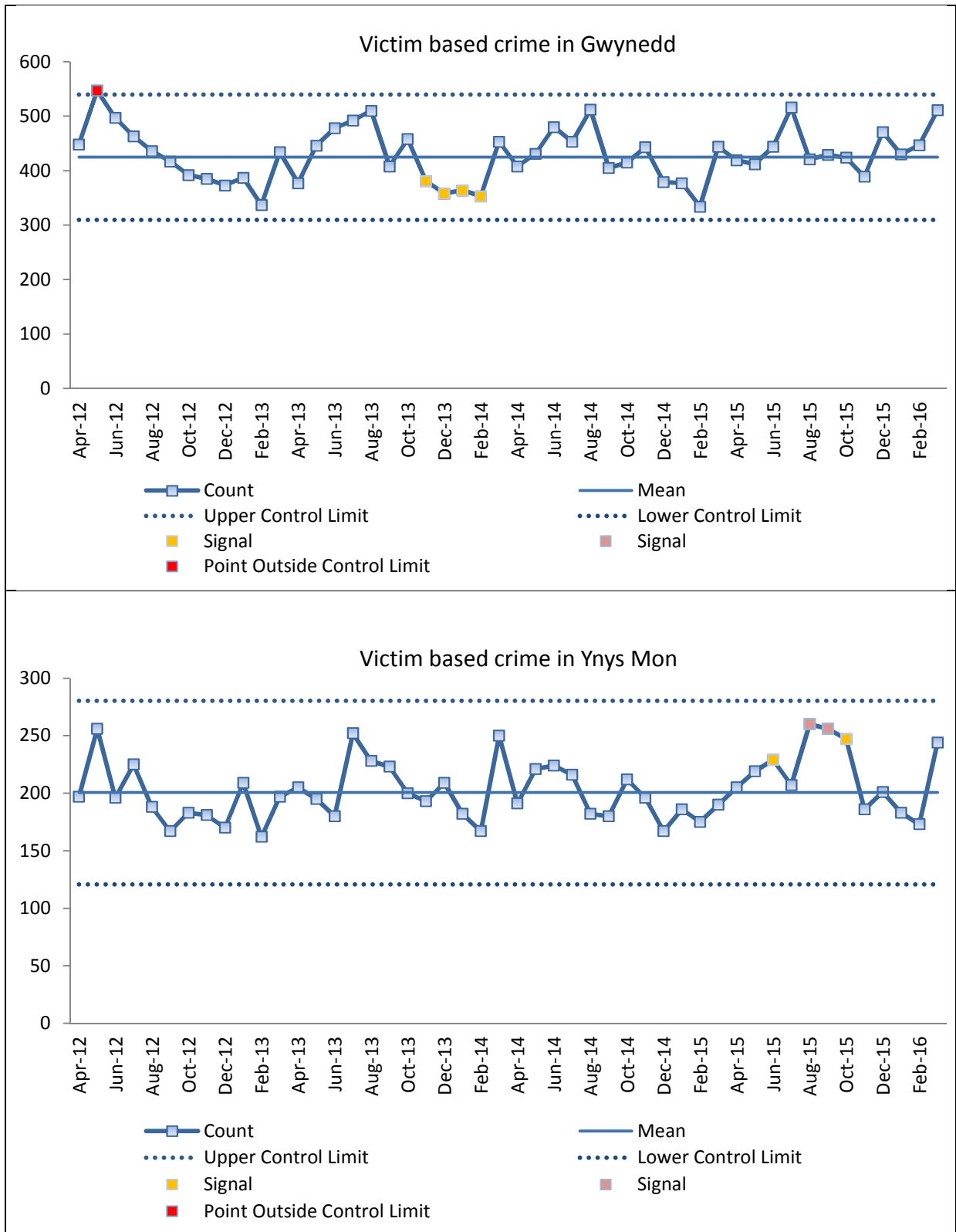
**MSG** – Most Similar Group – A group of counties in England and Wales similar both demographically and geographic and used to compare local CSPs against.

**Multi agency risk assessment conference (MARAC)** – Monthly multi agency meeting to discuss high risk / repeat cases of domestic abuse.

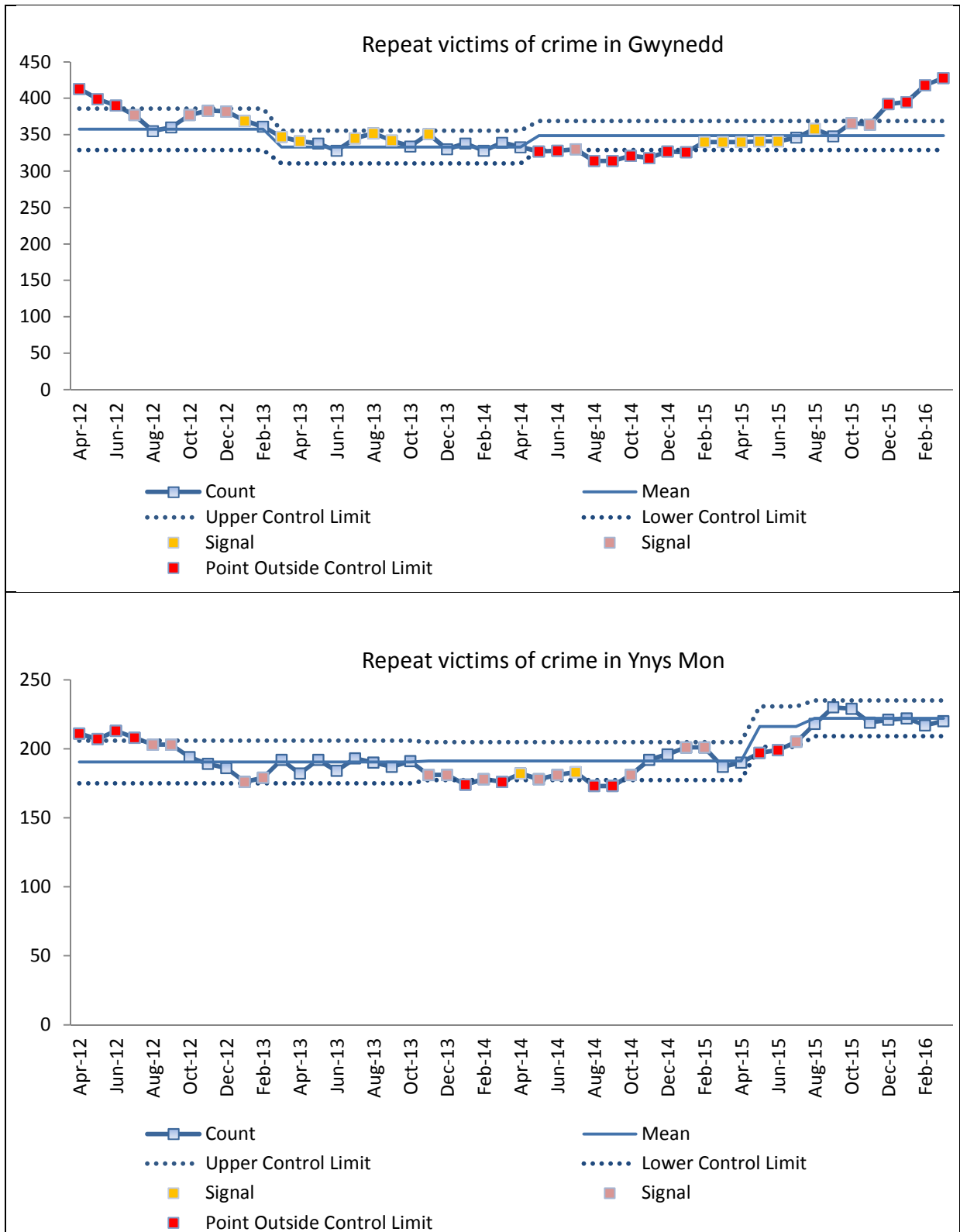
**Non domestic violent crime** – All violent crime where the relationship between the victim and offender is **not** deemed to be domestic in nature.



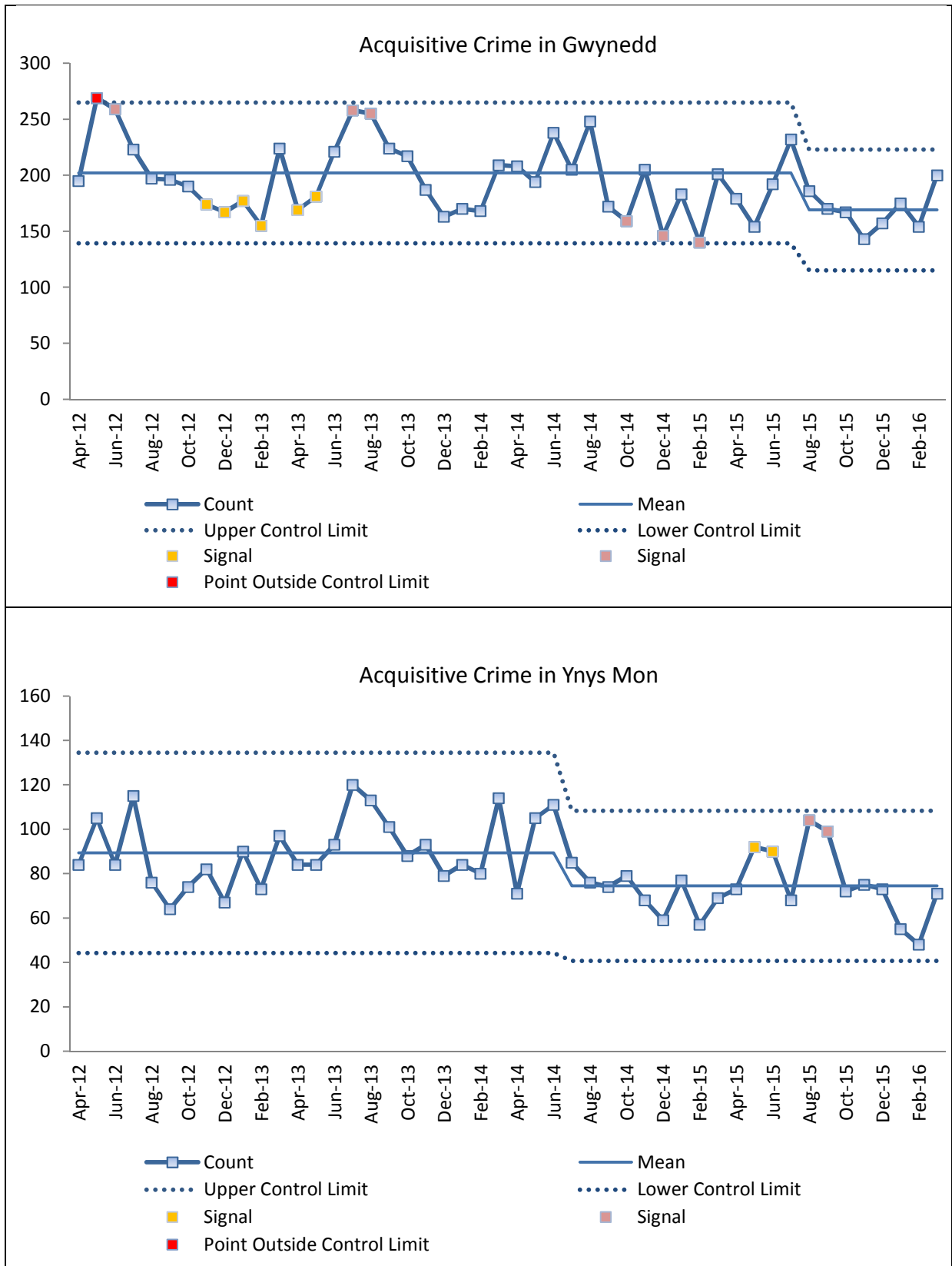
## Appendix - Victim based crime



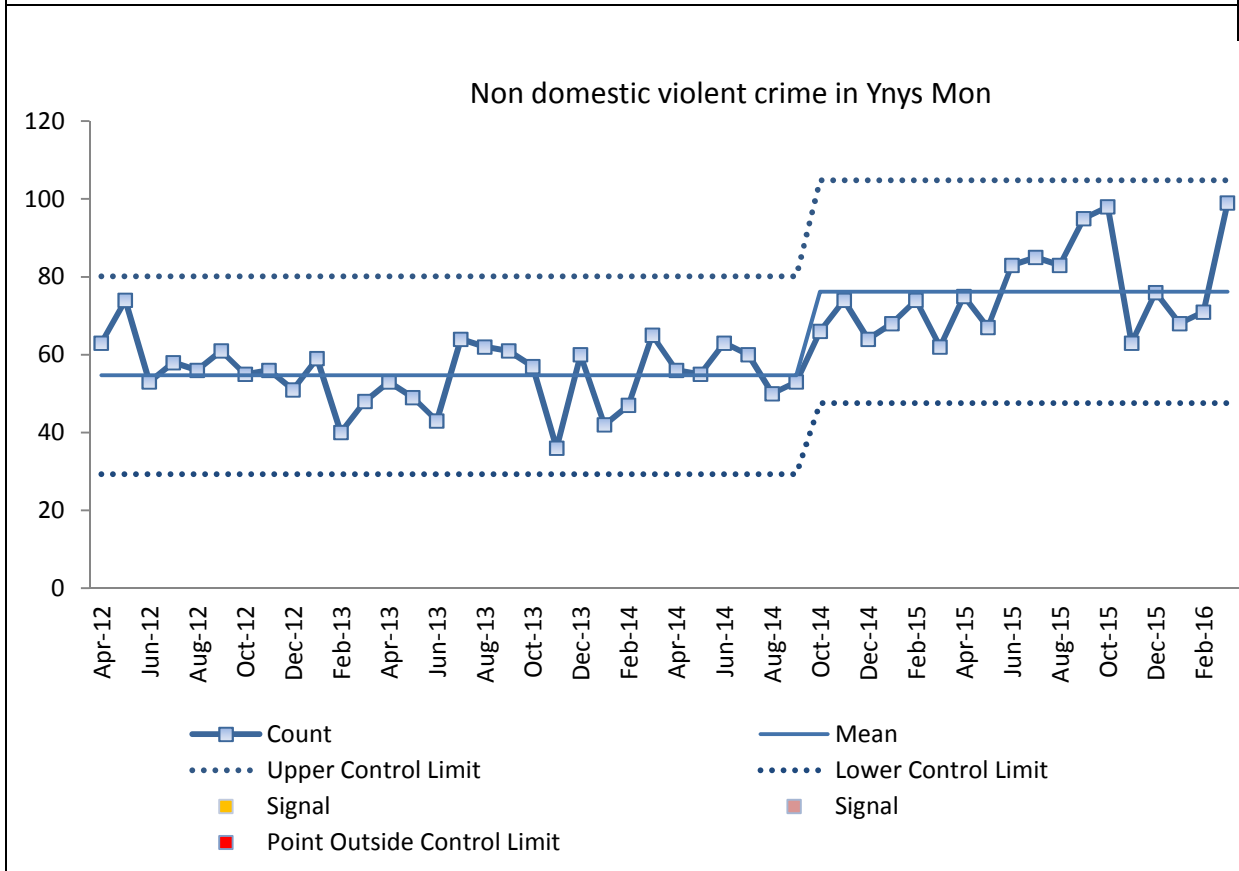
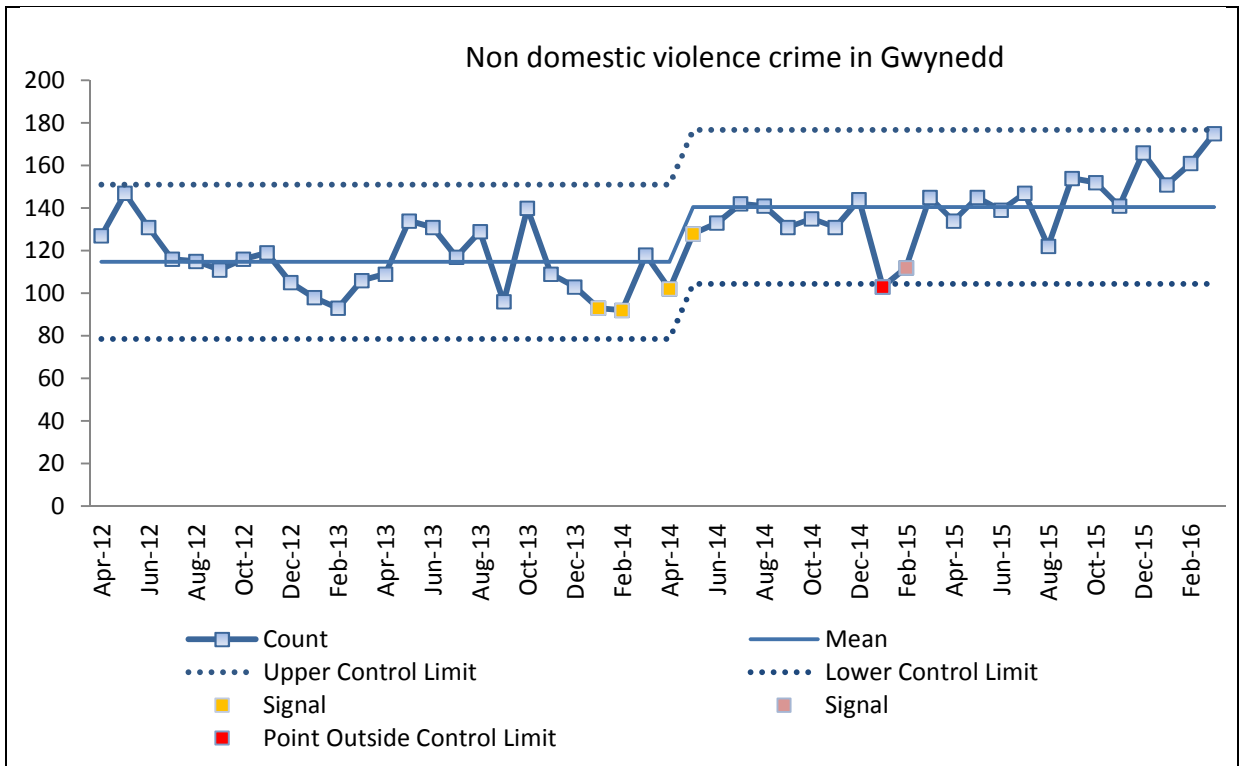
## Appendix – Repeat victims of crime



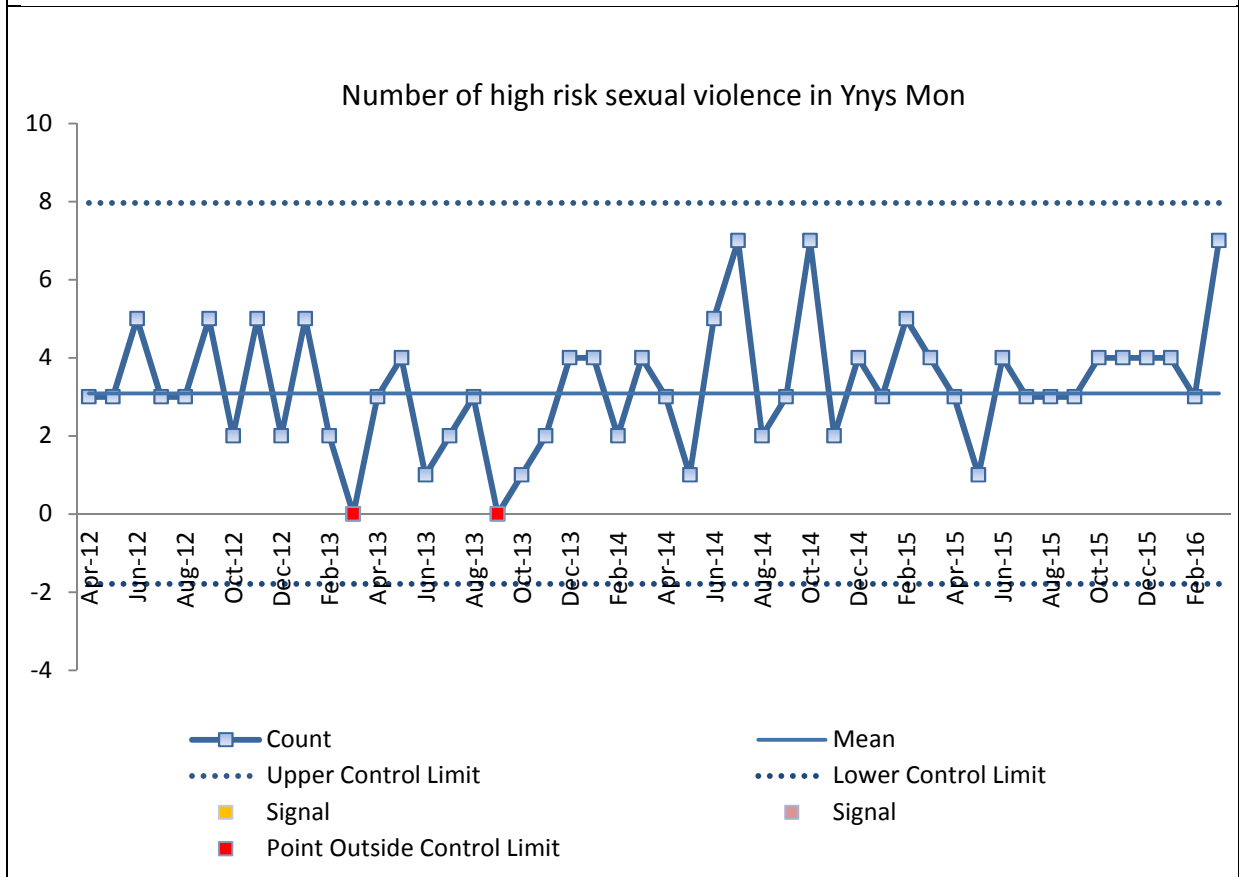
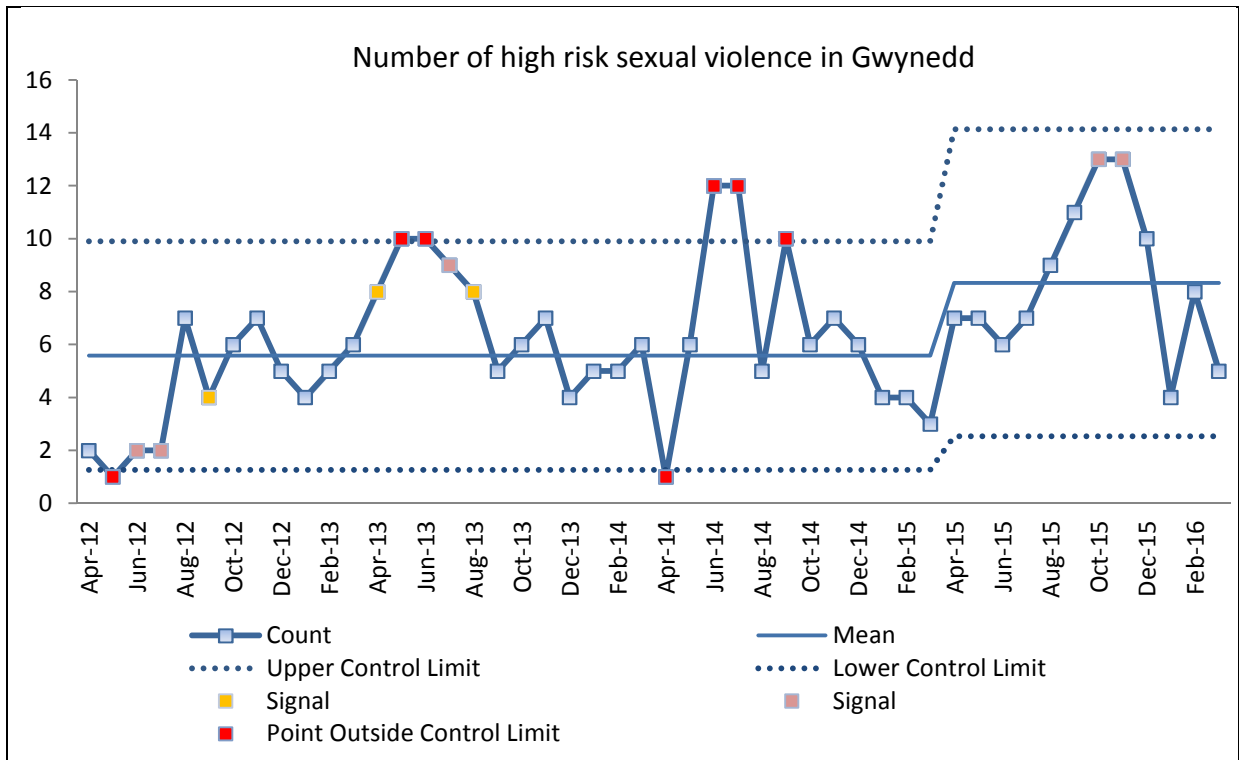
## Appendix – Acquisitive Crime



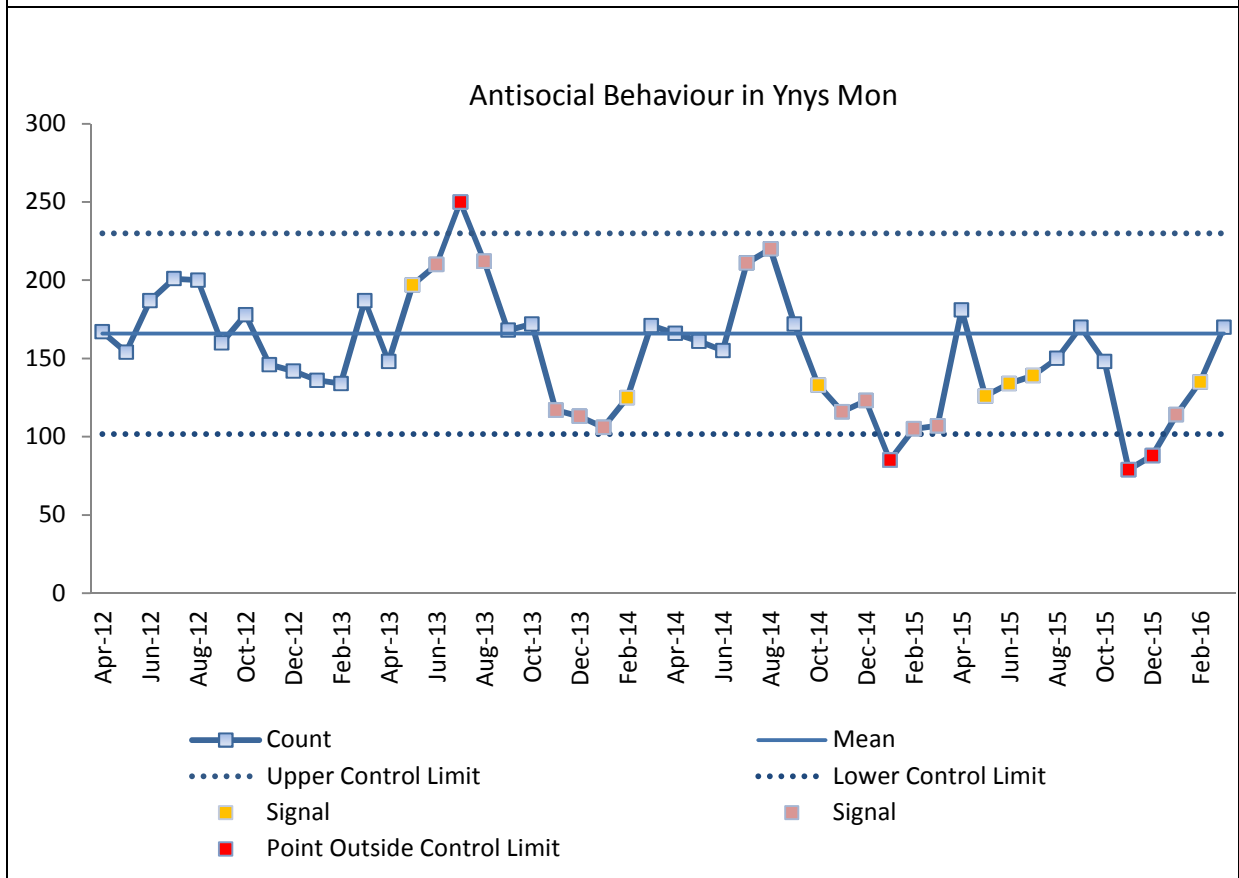
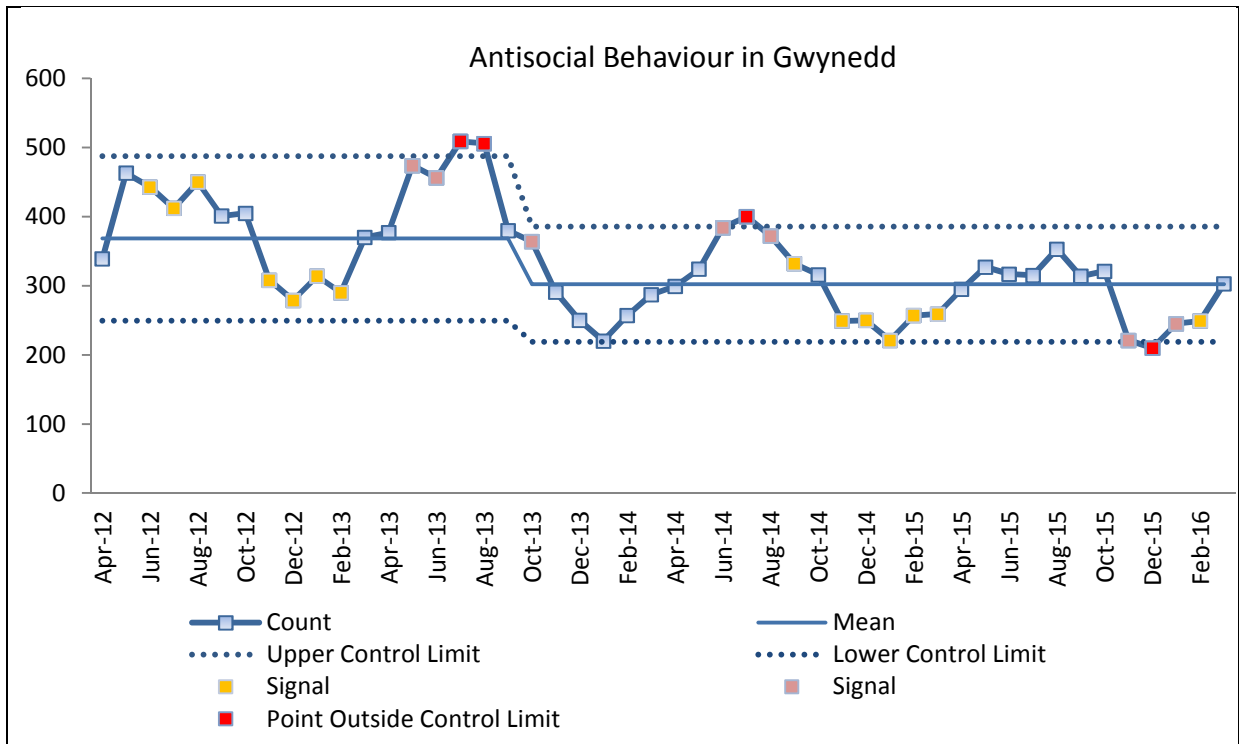
## Appendix – Non Domestic Violent Crime



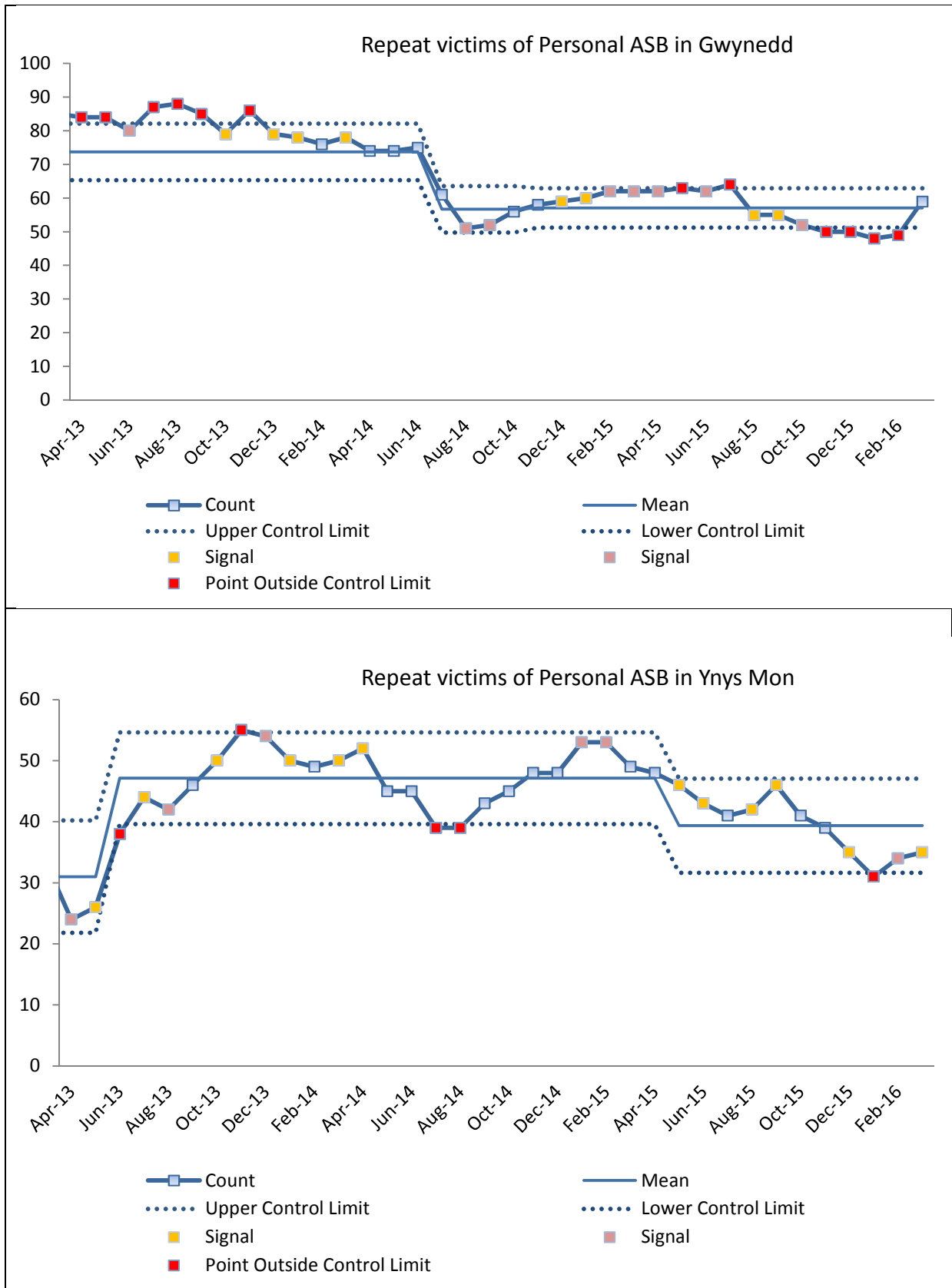
## Appendix – High Risk Sexual Violence



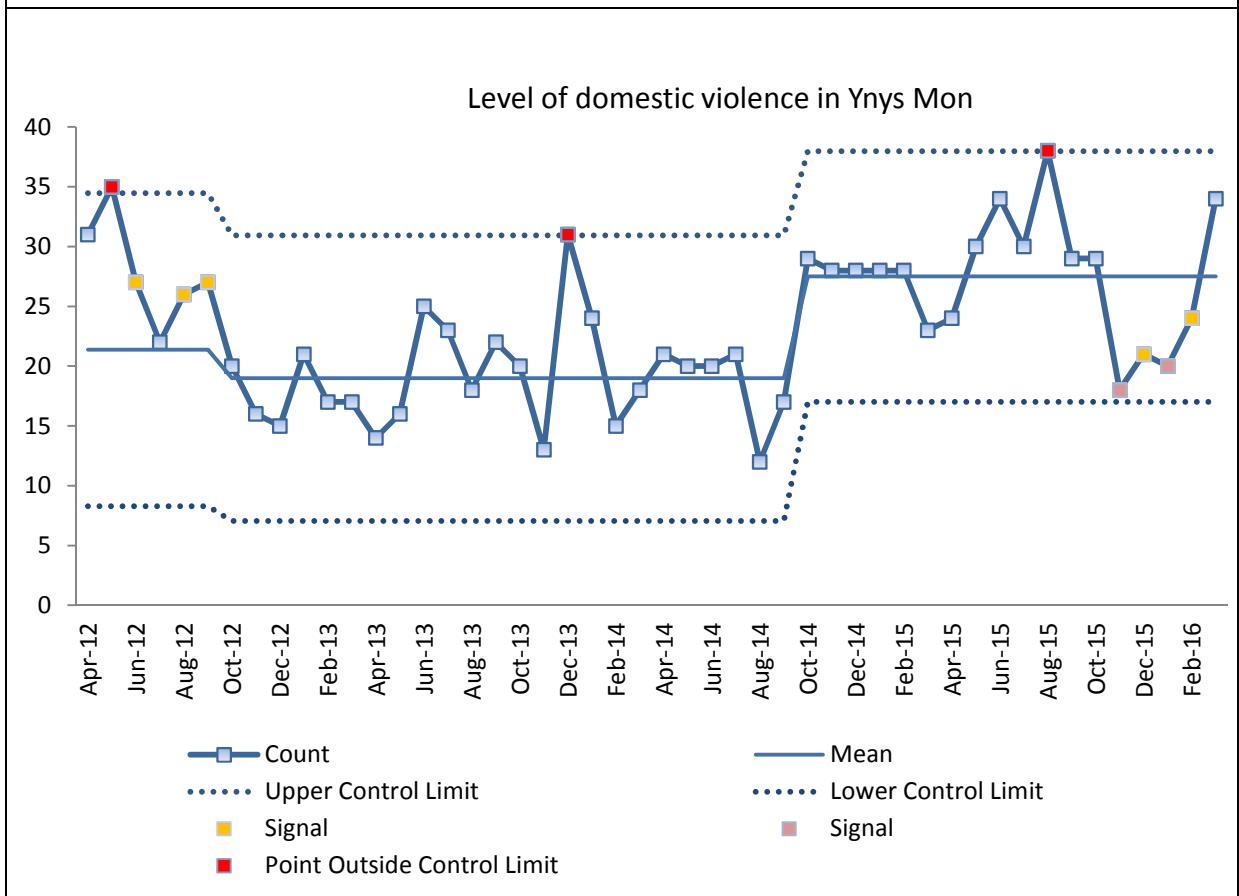
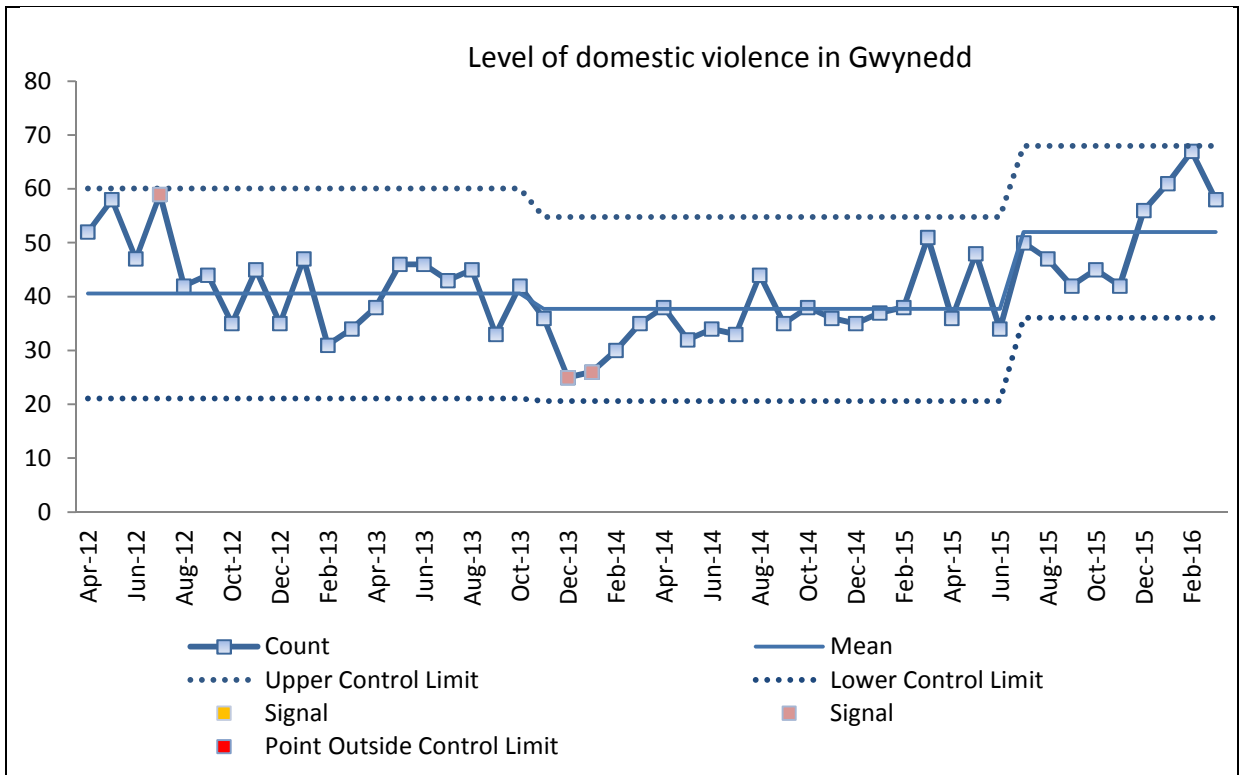
## Appendix – Antisocial Behaviour



## Appendix – Repeat Victims of Antisocial Behaviour

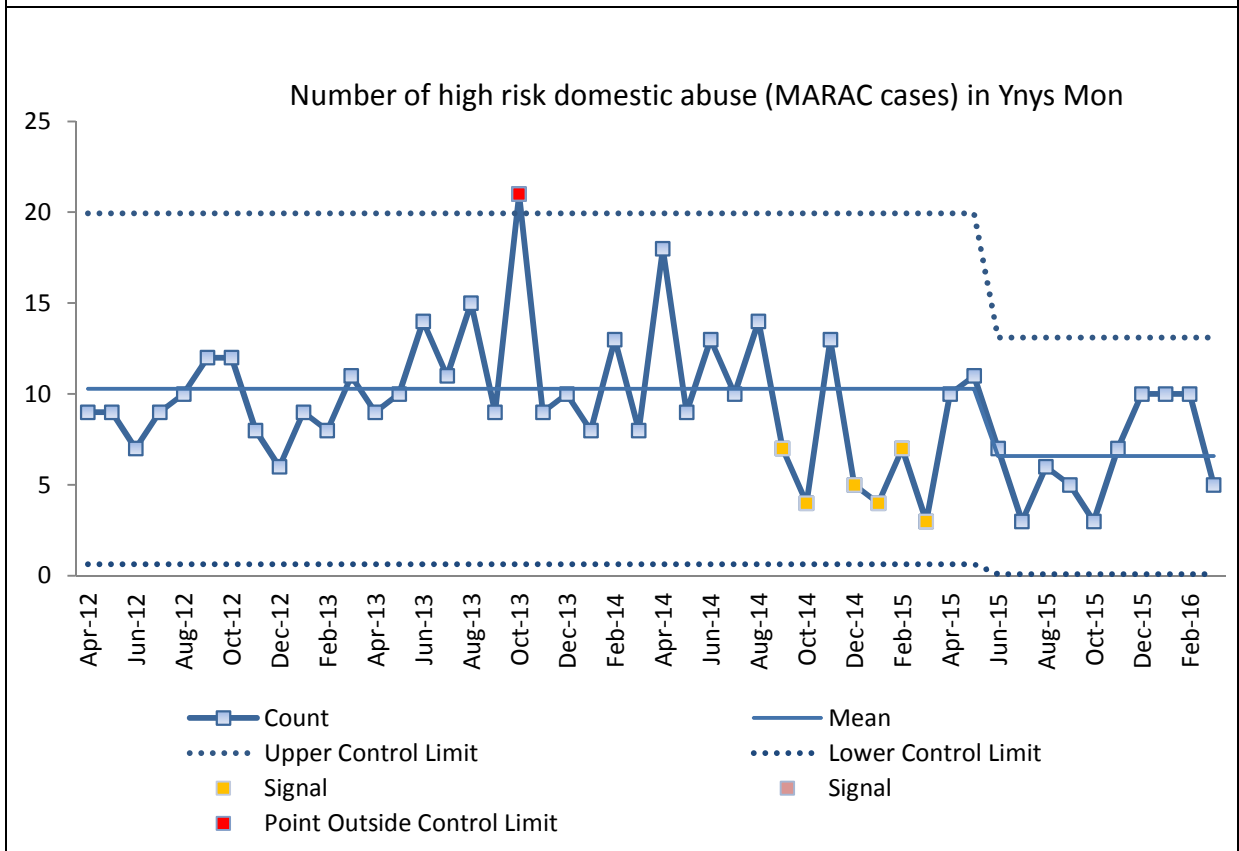
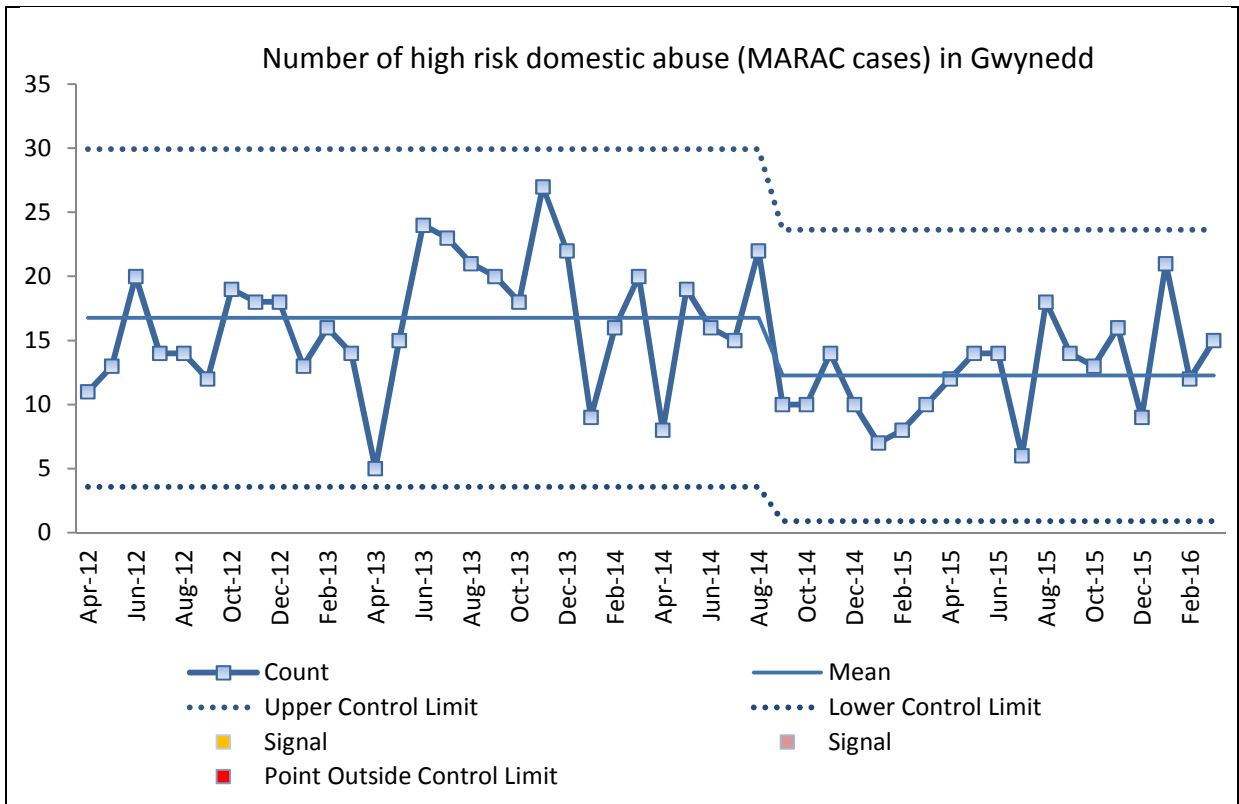


## Appendix – Domestic Violent Crime

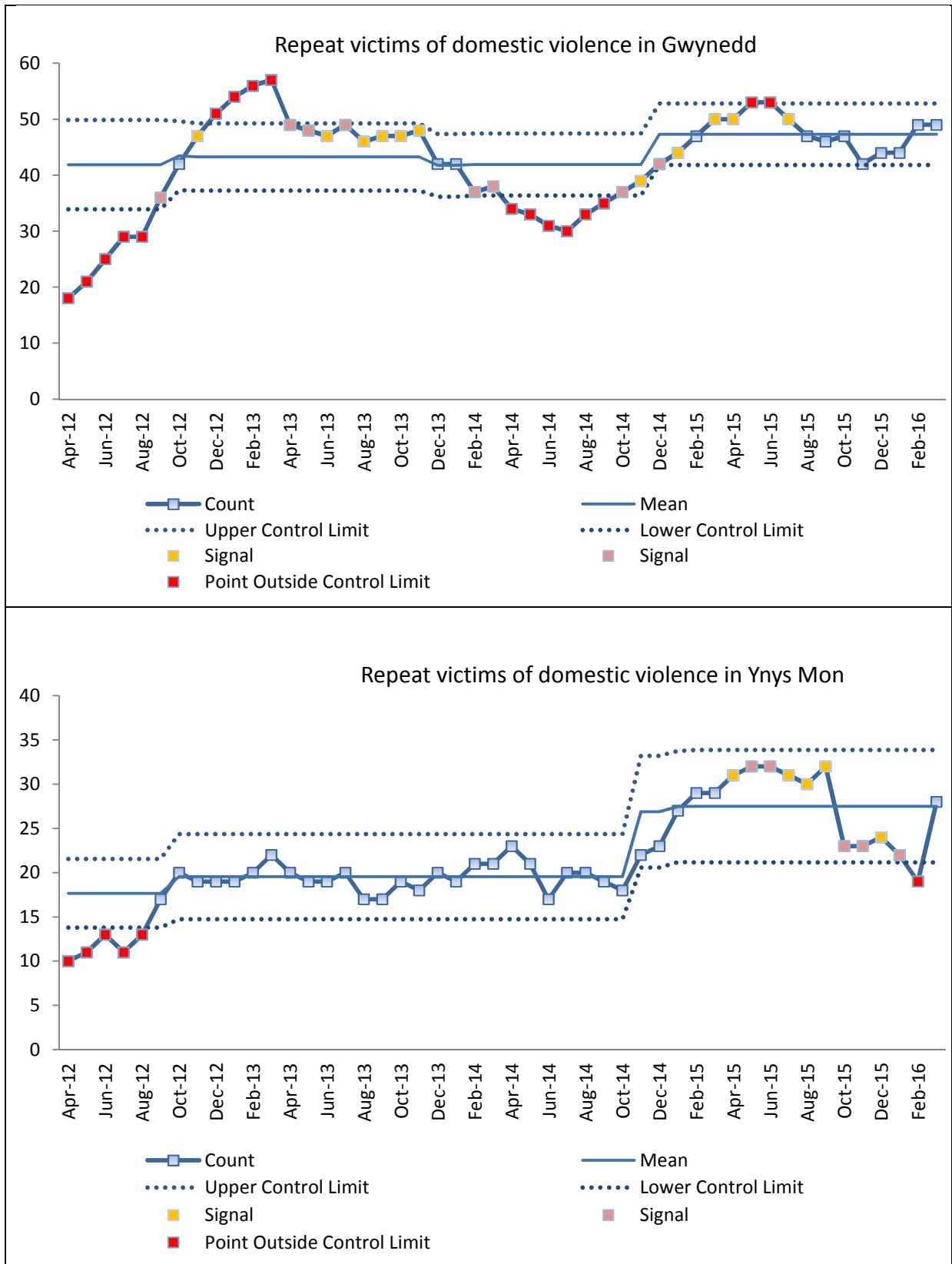




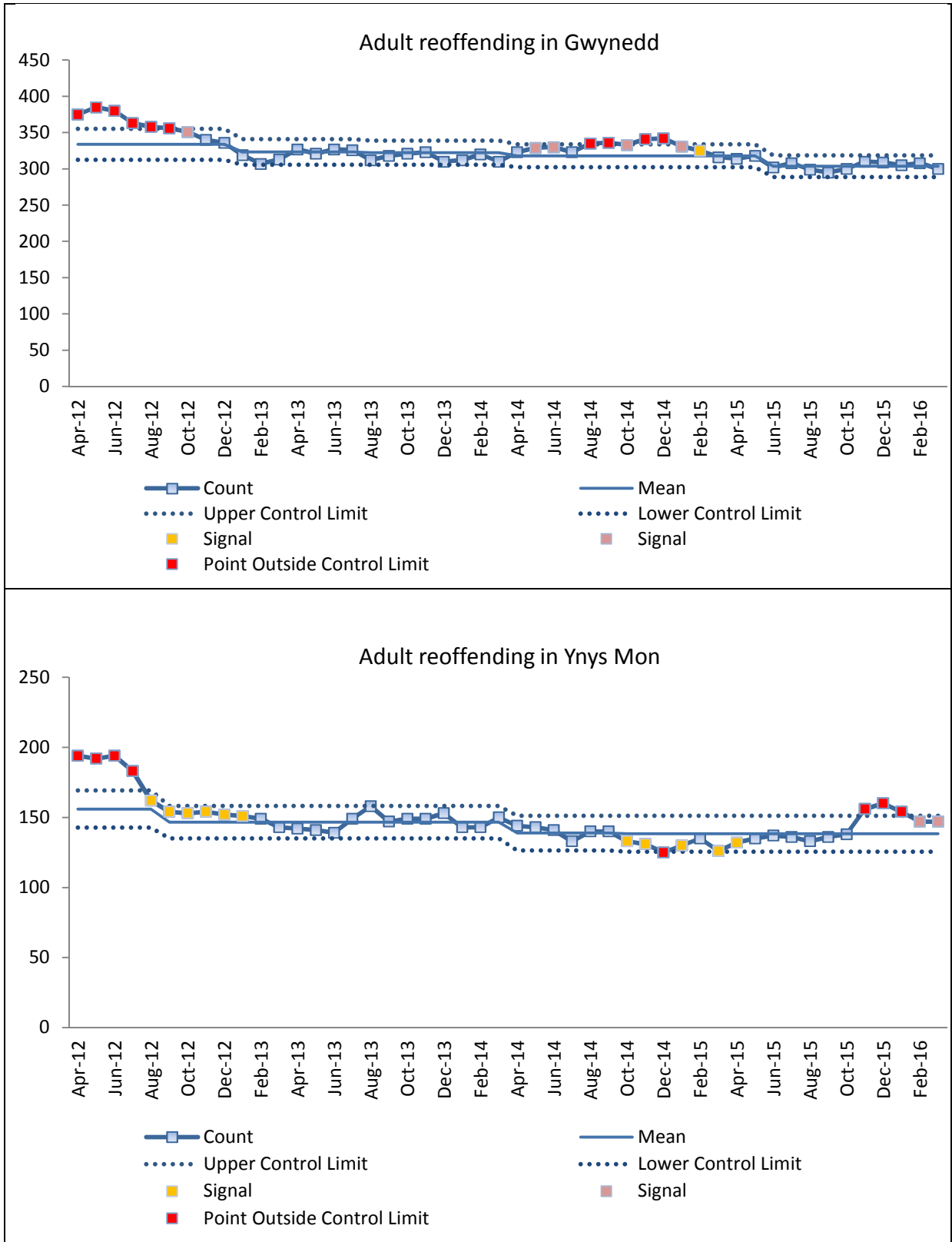
## Appendix – High Domestic Abuse Cases Discussed in MARAC



## Appendix – Repeat Victims of Domestic Violence



## Appendix – Adult Offending



## Appendix – Youth Offending

