




- LEGEND**
-  APPLICATION SITE BOUNDARY
 -  COMPANY CONTROLLED LAND
 -  BRYNTIRION TIP (PLANNING PERMISSION C20/0079/03/AC)



**FFESTINIOG QUARRY
EXTENSION TO BRYNTIRION TIP
SITE LOCATION PLAN**

BT 2/1

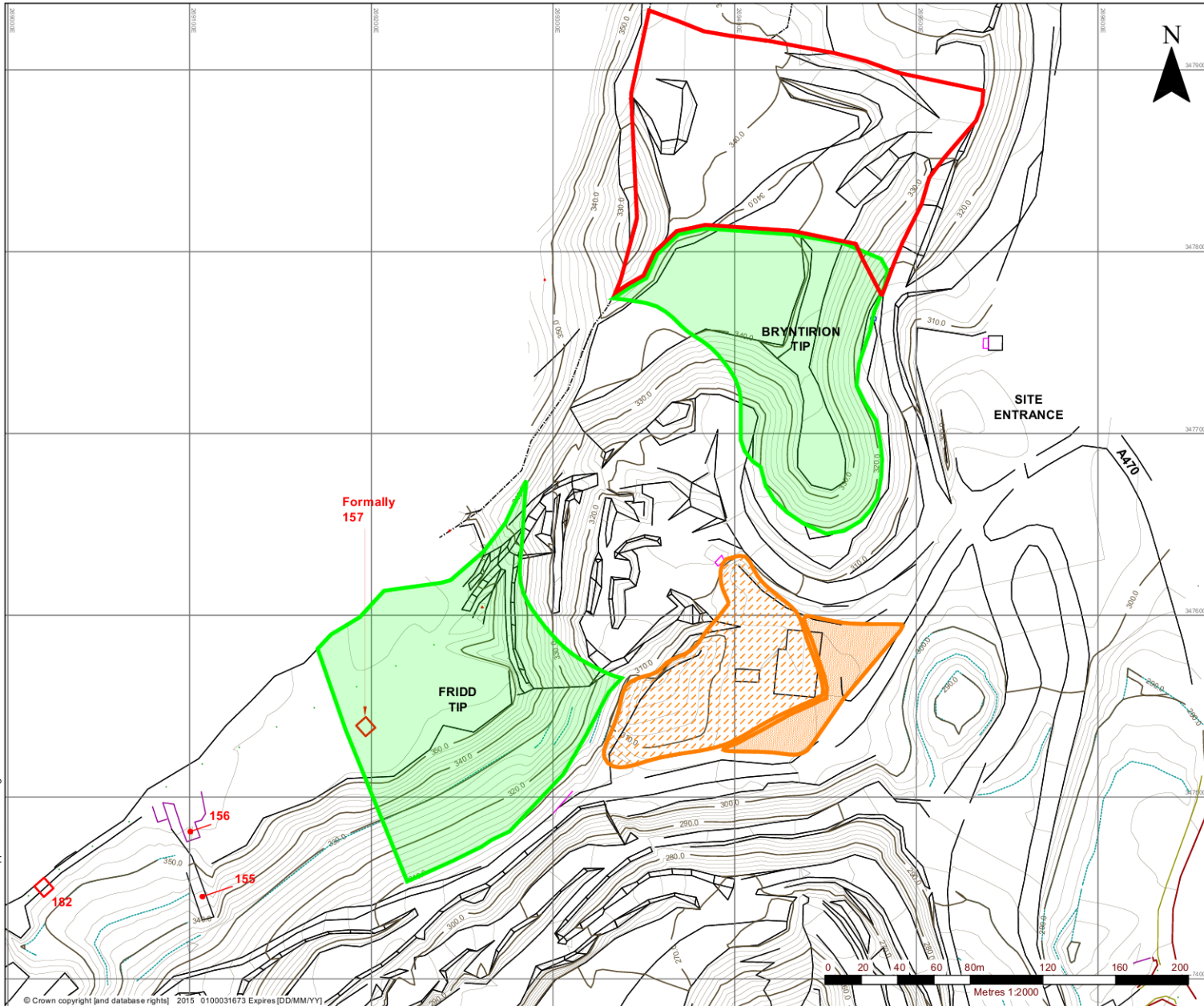
Scale: 1:10,000 (A3) Date: NOVEMBER 2021

403.06550.00027.12.F02-1.2 Site Location Plan.dwg

© Crown copyright [and database rights] 2015 0100031673 Expires [DD/MM/YY]

© This drawing and its content are the copyright of SLR Consulting Ltd and may not be reproduced or amended except by prior written permission. SLR Consulting Ltd accepts no liability for any amendments made by other persons.

403.06559.00027.12.F02-2.2.Application.Site.dwg



LEGEND	
	TIPS (PLANNING PERMISSION C20/0079/03/AC)
	MINERALS PLANT (PERMISSION C20/0067/03/AC)
	PLANNING PERMISSION C20/0066/03/AC
	APPLICATION SITE
	HER ASSETS





WELSH SLATE
Part of the Brecon Group



SLR
www.slrconsulting.com

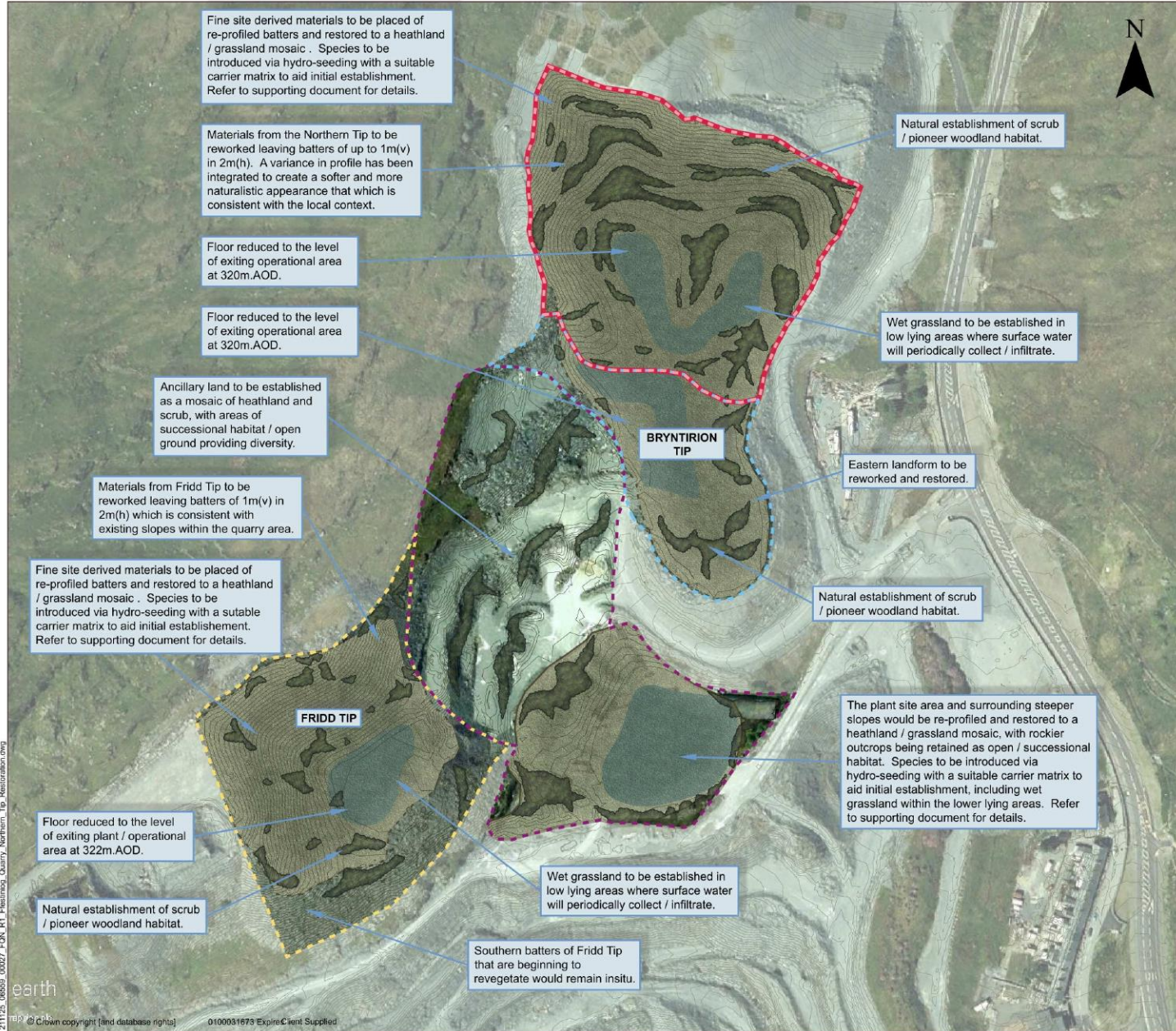
2ND AND 3RD FLOORS,
15 MIDDLE PAVEMENT,
NOTTINGHAM NG1 7DX
T: 01159 647280

FFESTINIOG QUARRY
EXTENSION TO BRYNTIRION TIP
APPLICATION SITE

BT 2/2

Scale 1:2000 (A3)

Date NOVEMBER 2021



Fine site derived materials to be placed of re-profiled batters and restored to a heathland / grassland mosaic. Species to be introduced via hydro-seeding with a suitable carrier matrix to aid initial establishment. Refer to supporting document for details.

Materials from the Northern Tip to be reworked leaving batters of up to 1m(v) in 2m(h). A variance in profile has been integrated to create a softer and more naturalistic appearance that which is consistent with the local context.

Floor reduced to the level of exiting operational area at 320m.AOD.

Floor reduced to the level of exiting operational area at 320m.AOD.

Ancillary land to be established as a mosaic of heathland and scrub, with areas of successional habitat / open ground providing diversity.

Materials from Fridd Tip to be reworked leaving batters of 1m(v) in 2m(h) which is consistent with existing slopes within the quarry area.

Fine site derived materials to be placed of re-profiled batters and restored to a heathland / grassland mosaic. Species to be introduced via hydro-seeding with a suitable carrier matrix to aid initial establishment. Refer to supporting document for details.

Floor reduced to the level of exiting plant / operational area at 322m.AOD.

Natural establishment of scrub / pioneer woodland habitat.

Wet grassland to be established in low lying areas where surface water will periodically collect / infiltrate.

Southern batters of Fridd Tip that are beginning to revegetate would remain insitu.

Natural establishment of scrub / pioneer woodland habitat.

Wet grassland to be established in low lying areas where surface water will periodically collect / infiltrate.

Eastern landform to be reworked and restored.

Natural establishment of scrub / pioneer woodland habitat.

The plant site area and surrounding steeper slopes would be re-profiled and restored to a heathland / grassland mosaic, with rockier outcrops being retained as open / successional habitat. Species to be introduced via hydro-seeding with a suitable carrier matrix to aid initial establishment, including wet grassland within the lower lying areas. Refer to supporting document for details.



LEGEND	
	SITE BOUNDARY
	EXTENT OF NORTHERN TIP
	EXTENT OF PERMITTED WORKINGS AT BRYNTRIRION TIP
	EXTENT OF PLANT SITE AND STOCKING AREA
	EXTENT OF FRIDD TIP
	TIP AREA TO BE REWORKED AND RESTORED AS HEATHLAND MOSAIC
	AREAS OF WET GRASSLAND
	NATURAL COLONISATION OF SCRUB / PIONEER WOODLAND
	OPEN / SUCCESSIONAL HABITAT



Revision	By	Chk'd By	Date	Comments

SLR global environmental solutions

2ND FLOOR
HERMES HOUSE
HOLSWORTH PARK
OXON BUSINESS PARK
SHREWSBURY, SY3 5HJ
T: 01743 239250
www.slrconsulting.com

Site
FFESTINIOG QUARRY

Project
RECOVERY OF MINERAL FROM TIPS

Drawing Title
NORTHERN TIP RESTORATION

Scale
1:2000 @ A3

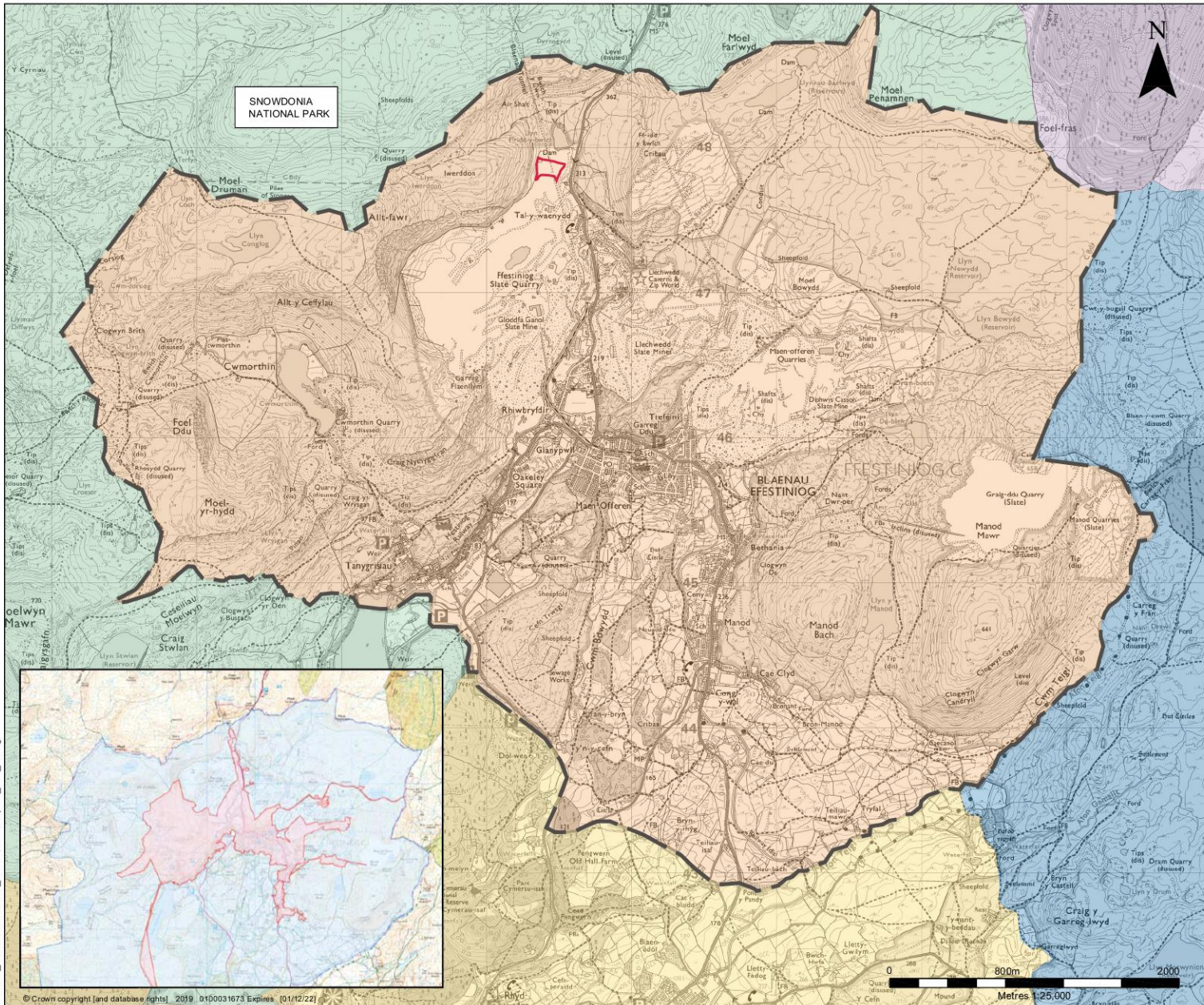
Date
NOV 2021

Drawing Number
BT 3/1

Revision
0

PLANNING

211125_06550_00027_FON_R1_Ffestiniog Quarry Northern_Tip_Restoration.dwg



LEGEND

- SITE BOUNDARY
- SNOWDONIA NATIONAL PARK BOUNDARY

LANDSCAPES AND SEASCAPES OF SNOWDONIA JULY 2014:

- 5. Y MOELWYNION
- 6. COEDWIG GWYDYR
- 8. DYFFRYN Y DDWRYD
- 9. Y MIGNEINT

GWYNEDD LANDSCAPE STRATEGY UPDATE 2012:

- 11. BLAENAU FFESTINIOG

THE SLATE LANDSCAPE OF NORTHWEST WALES:

- WORLD HERITAGE SITE
- BUFFER ZONE

NOTE: WORLD HERITAGE SITE SHOWN IN INSERT (BOTTOM LEFT)

Cynllunio
Derbyn 31.08.22

2ND FLOOR
HERMES HOUSE
HOLSWORTH PARK
OXON BUSINESS PARK
SHREWSBURY, SY3 5BJ
T: 01743 239250
www.slrconsulting.com

FFESTINIOG QUARRY

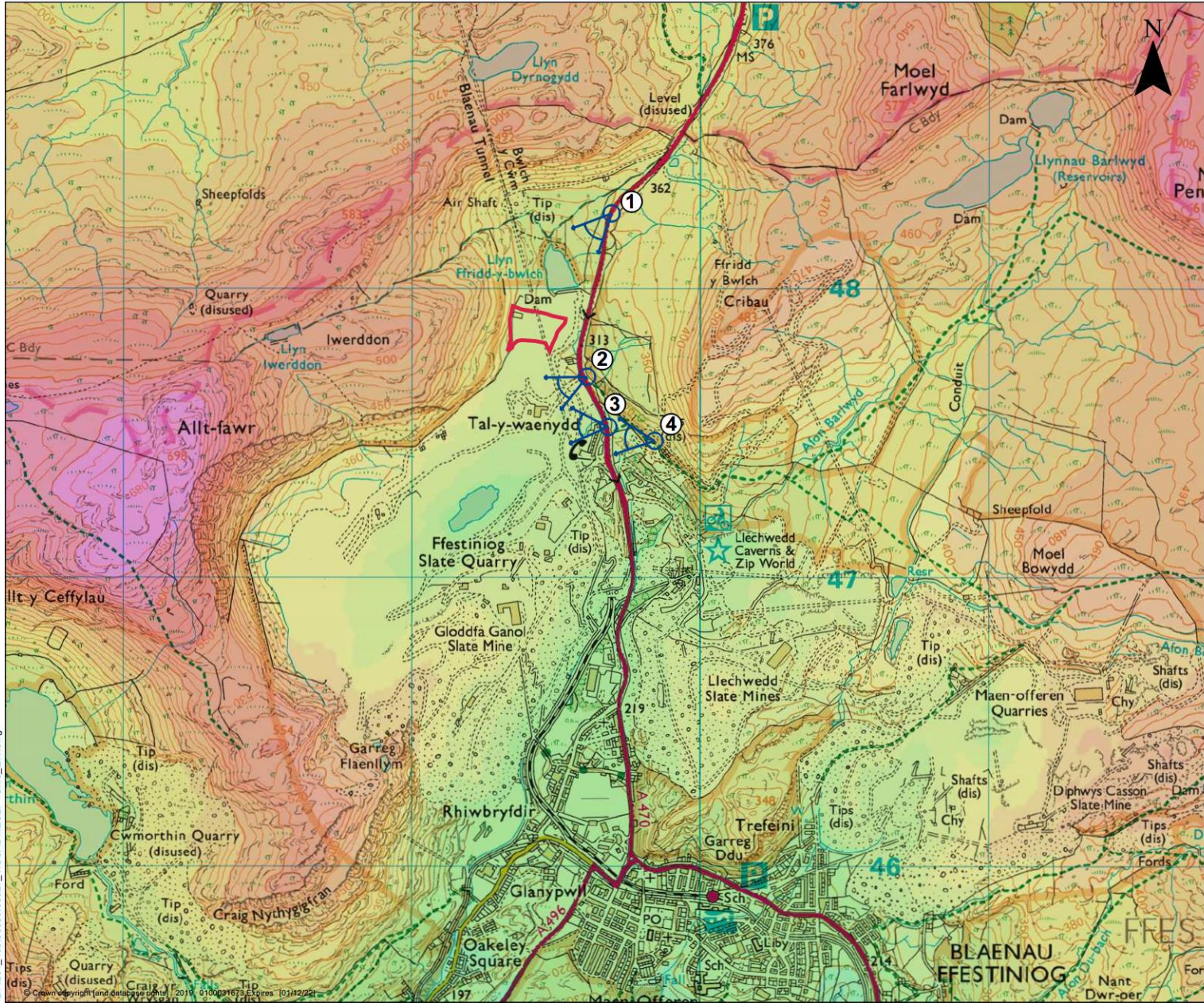
LANDSCAPE AND VISUAL

LANDSCAPE RECEPTORS

BT - 5 / 1

Scale 1:25,000 @ A3	Date DECEMBER 2021
------------------------	-----------------------

211201_403.06559.00027_character area plan_EW_e.dwg



LEGEND

- SITE BOUNDARY
- PROPOSED VIEWPOINTS

Cynllunio

Derbyn 31.08.22

2ND FLOOR
 HERMES HOUSE
 HOLS WORTH PARK
 OXON BUSINESS PARK
 SHREWSBURY, SY3 5JH
 T. 01743 230250
 www.slrconsulting.com

FFESTINIOG QUARRY

LANDSCAPE AND VISUAL

VISUAL RECEPTORS

BT - 5 / 2

Scale
1:12500 @ A3

Date
DECEMBER 2021

11201_403.06559.00027_VISUAL RECEPTORS_EW.dwg



NOTES
 THE PHOTOGRAPHS WITHIN THIS SHEET HAVE BEEN SCALED TO MATCH THE EQUIVALENT VIEW OF THE HUMAN EYE, WHEN PRINTED OUT AT A3 AND VIEWED AT A DISTANCE OF 300MM.



BREEDON
 2nd Floor Hermes House
 Hubsorth Park
 Ouse Business Park
 Strassbury
 SK13 3JL
 T. 01743 239200
 www.slrc consulting.com

SLR
 global environmental solutions

FFESTINIOG MINERALS PLANT	
VIEWPOINT PHOTOGRAPHY	
VIEWPOINT 1 AND 2	
BT - 5 / 3	
scale AS SHOWN	Date DECEMBER 2021

211202_403.06559.00027_BT1715_EW



NOTES

THE PHOTOGRAPHS WITHIN THIS SHEET HAVE BEEN SCALED TO MATCH THE EQUIVALENT VIEW OF THE HUMAN EYE, WHEN PRINTED OUT AT A3 AND VIEWED AT A DISTANCE OF 300MM.



BREEDON

2nd Floor Hermes House
Halsworth Park
Osian Business Park
Streebushy
SY3 5JU
T. 01743 239200
www.slrc consulting.com

SLR
global environmental solutions

FFESTINIOG MINERALS PLANT	
VIEWPOINT PHOTOGRAPHY	
VIEWPOINTS 3 AND 4	
BT - 5 / 4	
scale	Date
AS SHOWN	DECEMBER 2021

211202_403.06559.0027_BT173_EW



NOTES
 THE PHOTOGRAPHS WITHIN THIS SHEET HAVE BEEN SCALED TO MATCH THE EQUIVALENT VIEW OF THE HUMAN EYE, WHEN PRINTED OUT AT A3 AND VIEWED AT A DISTANCE OF 300MM.



BREEDON
 2nd Floor Hermes House
 Hubsorth Park
 Ouse Business Park
 Strassbury
 SK13 3JQ
 T. 01743 239200
 www.slrc consulting.com

SLR
 global environmental solutions

FFESTINIOG QUARRY	
VIEWPOINT PHOTOGRAPHY	
VIEWPOINT 1 AND 2	
BT - 5 / 3	
scale	Date
AS SHOWN	DECEMBER 2021



NOTES

THE PHOTOGRAPHS WITHIN THIS SHEET HAVE BEEN SCALED TO MATCH THE EQUIVALENT VIEW OF THE HUMAN EYE, WHEN PRINTED OUT AT A3 AND VIEWED AT A DISTANCE OF 300MM.



BREEDON

2nd Floor Hermes House
Halsworth Park
Oxon Business Park
Streebushy
SN3 5JL
T. 01743 239200
www.slrc consulting.com

SLR
global environmental solutions

FFESTINIOG QUARRY	
VIEWPOINT PHOTOGRAPHY	
VIEWPOINTS 3 AND 4	
BT - 5 / 4	
scale	Date
AS SHOWN	DECEMBER 2021



