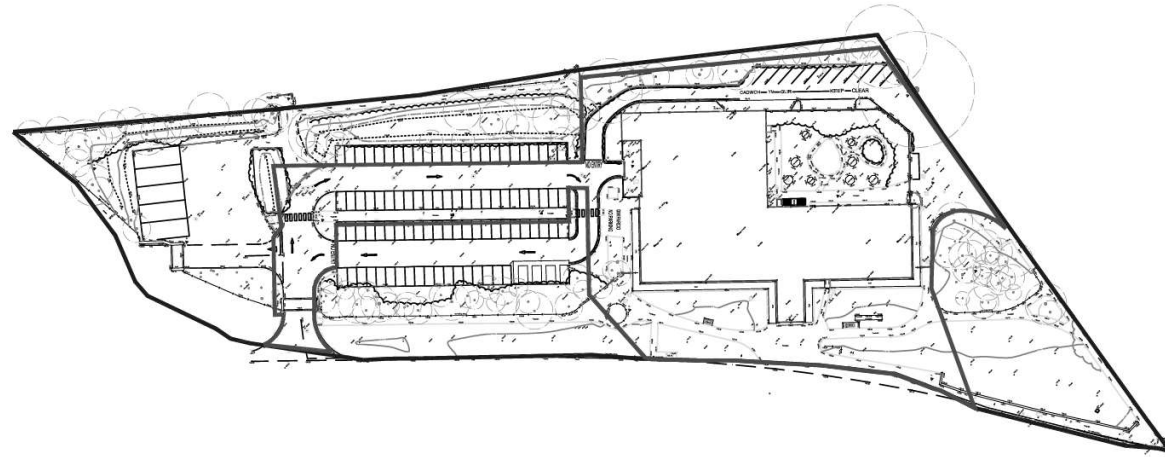
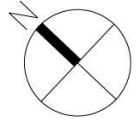
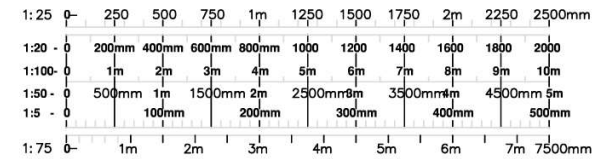


09/03/22
DERBYN - ADUAN CYNLLUNIO



Key

- Planning Application Site Boundary
- Adjoining Land under the Control of the Applicant



REV.	DESCRIPTION	DATE	DRAWN BY	CHECKED BY
P2	Red line amended – re-issued for planning purposes	10.02.22	Ds	
P1	Issued for planning purposes	01.02.22	Ds	

PROJECT	EMVC Llanberis : Proposed Car Park extension	JOB NO.	6859-JMA-01-ZZ-DR-A-00-0008	REVISION	P1
TITLE	Planning Application Site Boundary	SCALE	1:1250@A3	STATUS	Ds
CLIENT	Caulmert	DRAWN BY	Ds	CHECKED BY	DS
		DATE	FEB '22		

jarchitects
3A
Princess Street
Manchester
M1 6HS
T: 0161 200 6300
manchester@jarchitects.
www.jarchitects.net

NOTES

1. THIS DRAWING IS NOT TO BE USED FOR CONSTRUCTION PURPOSES.
2. THE CLIENT'S RESPONSIBILITY IS TO OBTAIN ALL NECESSARY PERMITS AND APPROVALS FROM THE LOCAL AUTHORITY.
3. THE CLIENT'S RESPONSIBILITY IS TO OBTAIN ALL NECESSARY PERMITS AND APPROVALS FROM THE LOCAL AUTHORITY.

1:20	0	100	200	300	400	500	600	700	800	900	1000
1:50	0	200	400	600	800	1000	1200	1400	1600	1800	2000
1:100	0	300	600	900	1200	1500	1800	2100	2400	2700	3000
1:200	0	400	800	1200	1600	2000	2400	2800	3200	3600	4000
1:300	0	500	1000	1500	2000	2500	3000	3500	4000	4500	5000
1:400	0	600	1200	1800	2400	3000	3600	4200	4800	5400	6000
1:500	0	700	1400	2100	2800	3500	4200	4900	5600	6300	7000
1:600	0	800	1600	2400	3200	4000	4800	5600	6400	7200	8000
1:700	0	900	1800	2700	3600	4500	5400	6300	7200	8100	9000
1:800	0	1000	2000	3000	4000	5000	6000	7000	8000	9000	10000
1:900	0	1100	2200	3300	4400	5500	6600	7700	8800	9900	11000
1:1000	0	1200	2400	3600	4800	6000	7200	8400	9600	10800	12000

09/03/22
DERBYN - ADRAN CYNLLUNIO



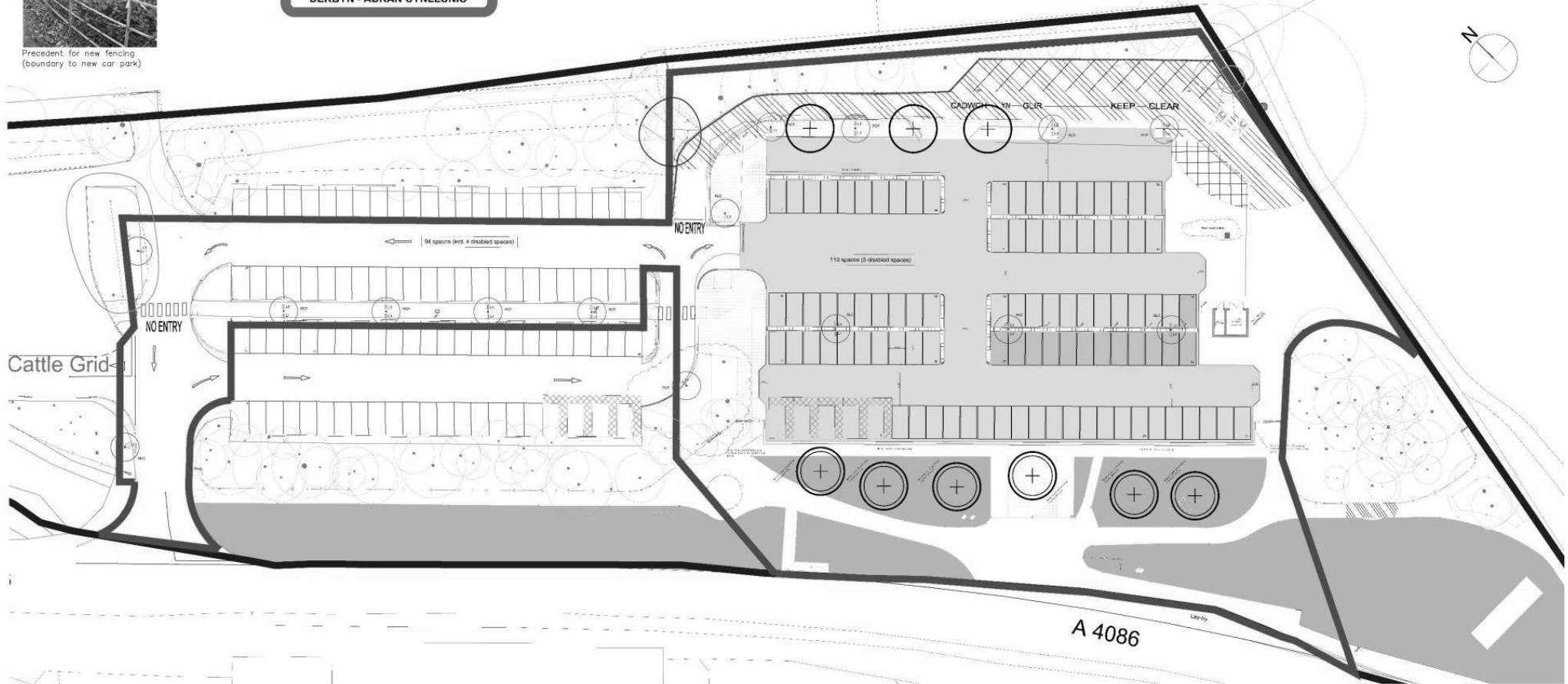


Precedent for new fencing
(boundary to new car park)

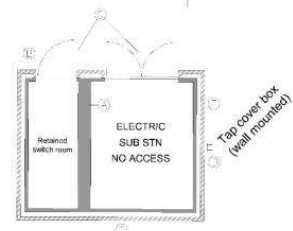
09/03/22

DERBYN - ADRAN CYNLLUNIO

1:50	200	300	400	500	750	1000	1500	2000	3000	5000
1:50	200	300	400	500	750	1000	1500	2000	3000	5000
1:100	100	150	200	250	375	500	750	1000	1500	2500
1:200	50	75	100	125	187.5	250	375	500	750	1250
1:300	33	50	66	83	125	166	250	333	500	833
1:400	25	37	50	62	93	125	187	250	375	625
1:600	16	25	33	41	62	83	125	166	250	416
1:800	12	18	24	31	46	62	93	125	187	312
1:1000	10	15	20	25	37	50	75	100	150	250



Site plan
Scale 1:200 @ A0



Part plan
Scale 1:50 @ A0

Substation key

- A - Existing inventory walls retained in situ
- B - New external masonry, outer leaf, forming brickwork (typically Istok, Suffolkshire Smooth Stone Blue or equal based on utility provider requirements)
- C - New external security doors - door and frame to comply with utility provider specification
- D - New secure, weatherproof wall mounted water tap provision
- E - New external fixed fuse panel location - to utility provider specification

Telephone dependent on other type potential located within existing live air in situ of new stone facing

The substation design has been developed alongside guidance provided by SP Energy Networks' GENERAL SPECIFICATION FOR THE CIVIL ENGINEERING AND BUILDING DESIGN AND CONSTRUCTION OF SECONDARY SUBSTATIONS

Sub.03.017 Appendix 1
16/07/2016

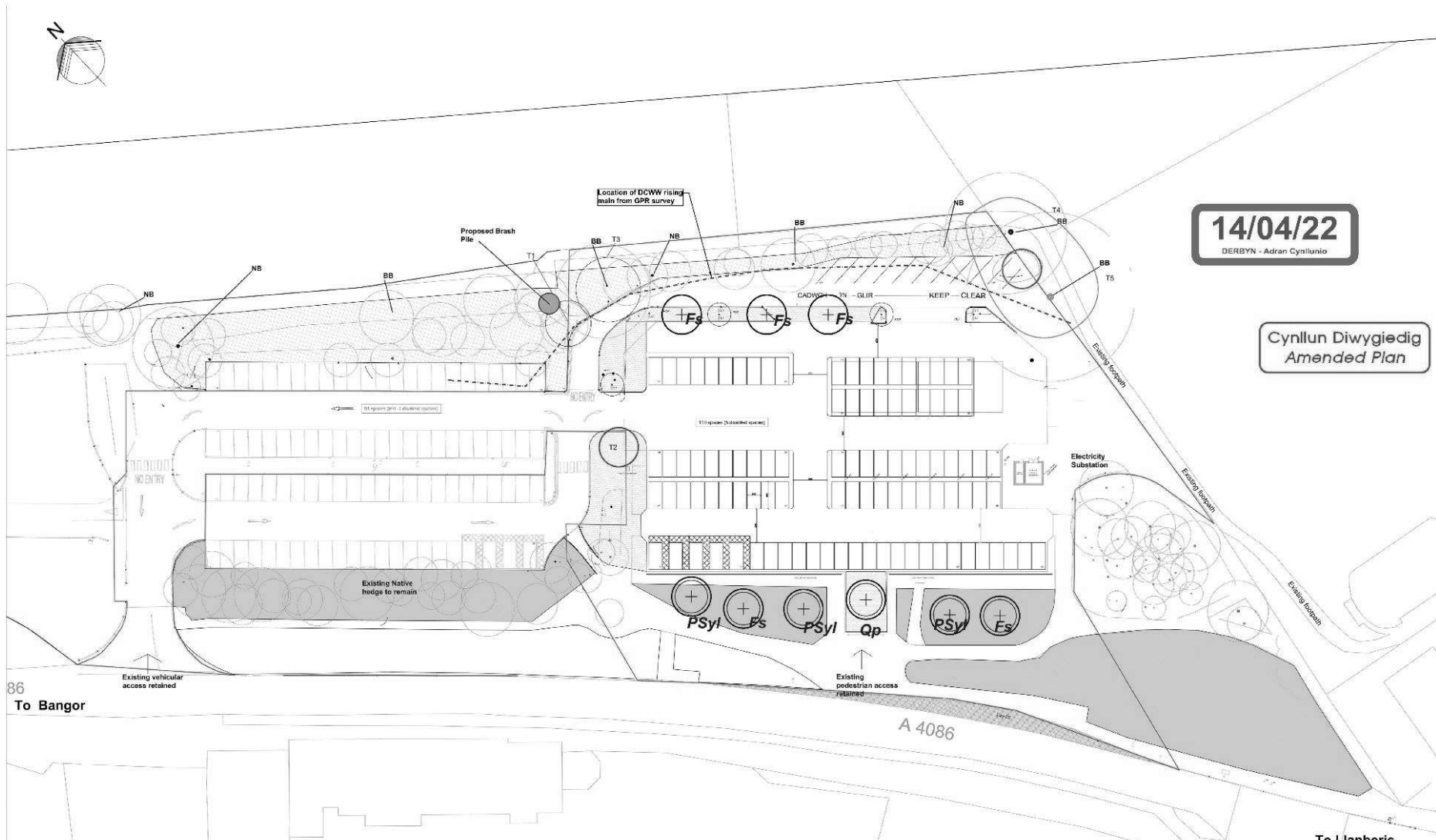
Key to drawing

- DC Charger
- Car park bay (electric charging - assumed dual post stand)
- Temporary ground protection
- Hard surface to be removed by hand
- RCP (New replacement lighting column (utilising existing position))
- NLC (New lighting column)
- Tree protection barrier
- New ticket machine
- Extent of new tarmac area
- Typical extent of new kerb edging to car park
- Typical extent of new fencing (according to car park (See precedent image) - 1200mm high)
- Plowed hill to areas
- New grassed area
- New tree planting (indicated) Refer to separate drawing for position and species information

Information to be read in conjunction with the following:

- Tree Protection plan (drawing reference CW/9038-P-TP Cheshire Woodlands)
- Tree Survey schedule (document reference CW/9038-SS3 Cheshire Woodlands)
- Landscape proposals (drawing reference 22/01/LP/001 Tirlun Barr)
- All other related design drawing information and documentation

NO.	DESCRIPTION	DATE	BY	CHKD BY
01	Issue for tender	16/07/2016	AW	AW
02	Issue for construction	16/07/2016	AW	AW
03	Issue for construction	16/07/2016	AW	AW
04	Issue for construction	16/07/2016	AW	AW
05	Issue for construction	16/07/2016	AW	AW
06	Issue for construction	16/07/2016	AW	AW
07	Issue for construction	16/07/2016	AW	AW
08	Issue for construction	16/07/2016	AW	AW
09	Issue for construction	16/07/2016	AW	AW
10	Issue for construction	16/07/2016	AW	AW
11	Issue for construction	16/07/2016	AW	AW
12	Issue for construction	16/07/2016	AW	AW
13	Issue for construction	16/07/2016	AW	AW
14	Issue for construction	16/07/2016	AW	AW
15	Issue for construction	16/07/2016	AW	AW
16	Issue for construction	16/07/2016	AW	AW
17	Issue for construction	16/07/2016	AW	AW
18	Issue for construction	16/07/2016	AW	AW
19	Issue for construction	16/07/2016	AW	AW
20	Issue for construction	16/07/2016	AW	AW
21	Issue for construction	16/07/2016	AW	AW
22	Issue for construction	16/07/2016	AW	AW
23	Issue for construction	16/07/2016	AW	AW
24	Issue for construction	16/07/2016	AW	AW
25	Issue for construction	16/07/2016	AW	AW
26	Issue for construction	16/07/2016	AW	AW
27	Issue for construction	16/07/2016	AW	AW
28	Issue for construction	16/07/2016	AW	AW
29	Issue for construction	16/07/2016	AW	AW
30	Issue for construction	16/07/2016	AW	AW
31	Issue for construction	16/07/2016	AW	AW
32	Issue for construction	16/07/2016	AW	AW
33	Issue for construction	16/07/2016	AW	AW
34	Issue for construction	16/07/2016	AW	AW
35	Issue for construction	16/07/2016	AW	AW
36	Issue for construction	16/07/2016	AW	AW
37	Issue for construction	16/07/2016	AW	AW
38	Issue for construction	16/07/2016	AW	AW
39	Issue for construction	16/07/2016	AW	AW
40	Issue for construction	16/07/2016	AW	AW
41	Issue for construction	16/07/2016	AW	AW
42	Issue for construction	16/07/2016	AW	AW
43	Issue for construction	16/07/2016	AW	AW
44	Issue for construction	16/07/2016	AW	AW
45	Issue for construction	16/07/2016	AW	AW
46	Issue for construction	16/07/2016	AW	AW
47	Issue for construction	16/07/2016	AW	AW
48	Issue for construction	16/07/2016	AW	AW
49	Issue for construction	16/07/2016	AW	AW
50	Issue for construction	16/07/2016	AW	AW
51	Issue for construction	16/07/2016	AW	AW
52	Issue for construction	16/07/2016	AW	AW
53	Issue for construction	16/07/2016	AW	AW
54	Issue for construction	16/07/2016	AW	AW
55	Issue for construction	16/07/2016	AW	AW
56	Issue for construction	16/07/2016	AW	AW
57	Issue for construction	16/07/2016	AW	AW
58	Issue for construction	16/07/2016	AW	AW
59	Issue for construction	16/07/2016	AW	AW
60	Issue for construction	16/07/2016	AW	AW
61	Issue for construction	16/07/2016	AW	AW
62	Issue for construction	16/07/2016	AW	AW
63	Issue for construction	16/07/2016	AW	AW
64	Issue for construction	16/07/2016	AW	AW
65	Issue for construction	16/07/2016	AW	AW
66	Issue for construction	16/07/2016	AW	AW
67	Issue for construction	16/07/2016	AW	AW
68	Issue for construction	16/07/2016	AW	AW
69	Issue for construction	16/07/2016	AW	AW
70	Issue for construction	16/07/2016	AW	AW
71	Issue for construction	16/07/2016	AW	AW
72	Issue for construction	16/07/2016	AW	AW
73	Issue for construction	16/07/2016	AW	AW
74	Issue for construction	16/07/2016	AW	AW
75	Issue for construction	16/07/2016	AW	AW
76	Issue for construction	16/07/2016	AW	AW
77	Issue for construction	16/07/2016	AW	AW
78	Issue for construction	16/07/2016	AW	AW
79	Issue for construction	16/07/2016	AW	AW
80	Issue for construction	16/07/2016	AW	AW
81	Issue for construction	16/07/2016	AW	AW
82	Issue for construction	16/07/2016	AW	AW
83	Issue for construction	16/07/2016	AW	AW
84	Issue for construction	16/07/2016	AW	AW
85	Issue for construction	16/07/2016	AW	AW
86	Issue for construction	16/07/2016	AW	AW
87	Issue for construction	16/07/2016	AW	AW
88	Issue for construction	16/07/2016	AW	AW
89	Issue for construction	16/07/2016	AW	AW
90	Issue for construction	16/07/2016	AW	AW
91	Issue for construction	16/07/2016	AW	AW
92	Issue for construction	16/07/2016	AW	AW
93	Issue for construction	16/07/2016	AW	AW
94	Issue for construction	16/07/2016	AW	AW
95	Issue for construction	16/07/2016	AW	AW
96	Issue for construction	16/07/2016	AW	AW
97	Issue for construction	16/07/2016	AW	AW
98	Issue for construction	16/07/2016	AW	AW
99	Issue for construction	16/07/2016	AW	AW
100	Issue for construction	16/07/2016	AW	AW



14/04/22
DERBYN - Adran Cynllunio

**Cynllun Diwygiedig
Amended Plan**

- Key**
- Site Boundary
 - Site Ownership
 - Existing Grass/Herb Layer (retained)
 - Existing Trees (individual & groups) (retained) (T1 - trees to be retained (see report))
 - Existing herbifera layer left to develop (and managed for increased biodiversity potential)
 - Individual tree for removal, note to horticultural report provided separately
- Proposed Details**
- Individual Tree Planting (note to horticultural report)
 - Amenity Grass Seeding Area Mix (see horticultural report)
 - Species Rich Wildflower Seeding Area Mix (see horticultural report)
 - 1m by 1m Brush Pile (hedgehog mitigation)
 - Bait Box (note and location to be agreed with ecologist)
 - Bird Nest Box (note and location to be agreed with ecologist)

- Notes**
1. Drawing based upon JM Architects proposed site plans Phase 1 and 2 drawing references 6858-JMA-01-22-DR-A-00-00-011 (Rev P3) and 6858-JMA-01-22-DR-A-00-00-002 (Rev P3) dated July 2021 updated (unreferenced) January 2022.
 2. All native trees and shrubs to be of native provenance where available.
 3. Arboricultural and Ecological Reporting provided separately.

©Tirlun Barr Associates

Rev A	JB	PW	JB	03/02/22
Issued	PW	JB	JB	02/02/22
Year	Form	Checked	Approved	Date

Tirlun Barr
Chartered Landscape Architecture
Tilly Bay, Llanberis, Gwynedd, LL55 2JY
Tel: 01482933333 www.tirlunbarr.com

Client
Caulmert

Project Title
**Former Electric Mountain
Visitor Centre, Llanberis.
Proposed Car Park Extension**

Drawing Title
Soft Landscape Proposals

Drawing Number
22/01/LP/001

Sheet
A0 Scale
1:250 Rev
A

86
To Bangor

To Llanberis

Species Rich Seed Mix

Species name	Common name	%	Wildflower?
Red Top	Red Top	10	
Common Bird's-foot	Common Bird's-foot	10	
Common Cowgrass	Common Cowgrass	10	
Common Nettle	Common Nettle	10	
Common Stachys	Common Stachys	10	
Common Yarrow	Common Yarrow	10	
Common Viperwort	Common Viperwort	10	
Common Valerian	Common Valerian	10	
Common Thyme	Common Thyme	10	
Common Marjoram	Common Marjoram	10	
Common Basil	Common Basil	10	
Common Sage	Common Sage	10	
Common Rosemary	Common Rosemary	10	
Common Lavender	Common Lavender	10	
Common Mint	Common Mint	10	
Common Lemon Balm	Common Lemon Balm	10	
Common Catnip	Common Catnip	10	
Common Stevia	Common Stevia	10	
Common Echinacea	Common Echinacea	10	
Common Goldenseal	Common Goldenseal	10	
Common Ashwagandha	Common Ashwagandha	10	
Common Reishi	Common Reishi	10	
Common Cordyceps	Common Cordyceps	10	
Common Ganoderma	Common Ganoderma	10	
Common Truffle	Common Truffle	10	
Common Morel	Common Morel	10	
Common Boletus	Common Boletus	10	
Common Amanita	Common Amanita	10	
Common Russula	Common Russula	10	
Common Lactaria	Common Lactaria	10	
Common Clavaria	Common Clavaria	10	
Common Marasmius	Common Marasmius	10	
Common Stropharia	Common Stropharia	10	
Common Psilocybe	Common Psilocybe	10	
Common Panaeolus	Common Panaeolus	10	
Common Coprinus	Common Coprinus	10	
Common Conocybe	Common Conocybe	10	
Common Microgaster	Common Microgaster	10	
Common Nudaria	Common Nudaria	10	
Common Scleroderma	Common Scleroderma	10	
Common Geoglyphus	Common Geoglyphus	10	
Common Paroloma	Common Paroloma	10	
Common Puffball	Common Puffball	10	
Common Stinkhorn	Common Stinkhorn	10	
Common Bird's-nest	Common Bird's-nest	10	
Common Honeycomb	Common Honeycomb	10	
Common Coral	Common Coral	10	
Common Brain	Common Brain	10	
Common Egg	Common Egg	10	
Common Saucer	Common Saucer	10	
Common Cup	Common Cup	10	
Common Shell	Common Shell	10	
Common Basket	Common Basket	10	
Common Spoon	Common Spoon	10	
Common Fan	Common Fan	10	
Common Comb	Common Comb	10	
Common Chain	Common Chain	10	
Common Snake	Common Snake	10	
Common Whip	Common Whip	10	
Common Cord	Common Cord	10	
Common Root	Common Root	10	
Common Stick	Common Stick	10	
Common Leaf	Common Leaf	10	
Common Flower	Common Flower	10	
Common Fruit	Common Fruit	10	
Common Seed	Common Seed	10	
Common Spore	Common Spore	10	
Common Mycelium	Common Mycelium	10	
Common Rhizome	Common Rhizome	10	
Common Stolon	Common Stolon	10	
Common Sclerotium	Common Sclerotium	10	
Common Stereum	Common Stereum	10	
Common Trechma	Common Trechma	10	
Common Xanthoporia	Common Xanthoporia	10	
Common Marasmius	Common Marasmius	10	
Common Stropharia	Common Stropharia	10	
Common Psilocybe	Common Psilocybe	10	
Common Panaeolus	Common Panaeolus	10	
Common Coprinus	Common Coprinus	10	
Common Conocybe	Common Conocybe	10	
Common Microgaster	Common Microgaster	10	
Common Nudaria	Common Nudaria	10	
Common Scleroderma	Common Scleroderma	10	
Common Geoglyphus	Common Geoglyphus	10	
Common Paroloma	Common Paroloma	10	
Common Puffball	Common Puffball	10	
Common Stinkhorn	Common Stinkhorn	10	
Common Bird's-nest	Common Bird's-nest	10	
Common Honeycomb	Common Honeycomb	10	
Common Coral	Common Coral	10	
Common Brain	Common Brain	10	
Common Egg	Common Egg	10	
Common Saucer	Common Saucer	10	
Common Cup	Common Cup	10	
Common Shell	Common Shell	10	
Common Basket	Common Basket	10	
Common Spoon	Common Spoon	10	
Common Fan	Common Fan	10	
Common Comb	Common Comb	10	
Common Chain	Common Chain	10	
Common Snake	Common Snake	10	
Common Whip	Common Whip	10	
Common Cord	Common Cord	10	
Common Root	Common Root	10	
Common Stick	Common Stick	10	
Common Leaf	Common Leaf	10	
Common Flower	Common Flower	10	
Common Fruit	Common Fruit	10	
Common Seed	Common Seed	10	
Common Spore	Common Spore	10	
Common Mycelium	Common Mycelium	10	
Common Rhizome	Common Rhizome	10	
Common Stolon	Common Stolon	10	
Common Sclerotium	Common Sclerotium	10	
Common Stereum	Common Stereum	10	
Common Trechma	Common Trechma	10	
Common Xanthoporia	Common Xanthoporia	10	

Species Rich Seed Mix

Species name	Common name	%	Wildflower?
Red Top	Red Top	10	
Common Bird's-foot	Common Bird's-foot	10	
Common Cowgrass	Common Cowgrass	10	
Common Nettle	Common Nettle	10	
Common Stachys	Common Stachys	10	
Common Yarrow	Common Yarrow	10	
Common Viperwort	Common Viperwort	10	
Common Valerian	Common Valerian	10	
Common Thyme	Common Thyme	10	
Common Marjoram	Common Marjoram	10	
Common Basil	Common Basil	10	
Common Sage	Common Sage	10	
Common Rosemary	Common Rosemary	10	
Common Lavender	Common Lavender	10	
Common Mint	Common Mint	10	
Common Lemon Balm	Common Lemon Balm	10	
Common Catnip	Common Catnip	10	
Common Stevia	Common Stevia	10	
Common Echinacea	Common Echinacea	10	
Common Goldenseal	Common Goldenseal	10	
Common Ashwagandha	Common Ashwagandha	10	
Common Reishi	Common Reishi	10	
Common Cordyceps	Common Cordyceps	10	
Common Ganoderma	Common Ganoderma	10	
Common Truffle	Common Truffle	10	
Common Morel	Common Morel	10	
Common Boletus	Common Boletus	10	
Common Amanita	Common Amanita	10	
Common Russula	Common Russula	10	
Common Lactaria	Common Lactaria	10	
Common Clavaria	Common Clavaria	10	
Common Marasmius	Common Marasmius	10	
Common Stropharia	Common Stropharia	10	
Common Psilocybe	Common Psilocybe	10	
Common Panaeolus	Common Panaeolus	10	
Common Coprinus	Common Coprinus	10	
Common Conocybe	Common Conocybe	10	
Common Microgaster	Common Microgaster	10	
Common Nudaria	Common Nudaria	10	
Common Scleroderma	Common Scleroderma	10	
Common Geoglyphus	Common Geoglyphus	10	
Common Paroloma	Common Paroloma	10	
Common Puffball	Common Puffball	10	
Common Stinkhorn	Common Stinkhorn	10	
Common Bird's-nest	Common Bird's-nest	10	
Common Honeycomb	Common Honeycomb	10	
Common Coral	Common Coral	10	
Common Brain	Common Brain	10	
Common Egg	Common Egg	10	
Common Saucer	Common Saucer	10	
Common Cup	Common Cup	10	
Common Shell	Common Shell	10	
Common Basket	Common Basket	10	
Common Spoon	Common Spoon	10	
Common Fan	Common Fan	10	
Common Comb	Common Comb	10	
Common Chain	Common Chain	10	
Common Snake	Common Snake	10	
Common Whip	Common Whip	10	
Common Cord	Common Cord	10	
Common Root	Common Root	10	
Common Stick	Common Stick	10	
Common Leaf	Common Leaf	10	
Common Flower	Common Flower	10	
Common Fruit	Common Fruit	10	
Common Seed	Common Seed	10	
Common Spore	Common Spore	10	
Common Mycelium	Common Mycelium	10	
Common Rhizome	Common Rhizome	10	
Common Stolon	Common Stolon	10	
Common Sclerotium	Common Sclerotium	10	
Common Stereum	Common Stereum	10	
Common Trechma	Common Trechma	10	
Common Xanthoporia	Common Xanthoporia	10	

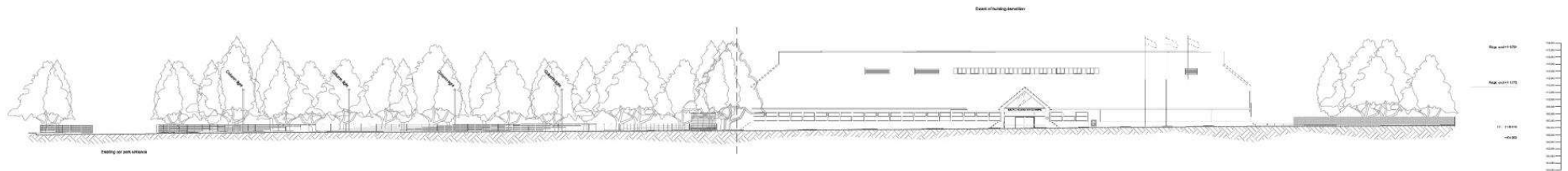
Species Rich Seed Mix

Species name	Common name	%	Wildflower?
Red Top	Red Top	10	
Common Bird's-foot	Common Bird's-foot	10	
Common Cowgrass	Common Cowgrass	10	
Common Nettle	Common Nettle	10	
Common Stachys	Common Stachys	10	
Common Yarrow	Common Yarrow	10	
Common Viperwort	Common Viperwort	10	
Common Valerian	Common Valerian	10	
Common Thyme	Common Thyme	10	
Common Marjoram	Common Marjoram	10	
Common Basil	Common Basil	10	
Common Sage	Common Sage	10	
Common Rosemary	Common Rosemary	10	
Common Lavender	Common Lavender	10	
Common Mint	Common Mint	10	
Common Lemon Balm	Common Lemon Balm	10	
Common Catnip	Common Catnip	10	
Common Stevia	Common Stevia	10	
Common Echinacea	Common Echinacea	10	
Common Goldenseal	Common Goldenseal	10	
Common Ashwagandha	Common Ashwagandha	10	
Common Reishi	Common Reishi	10	
Common Cordyceps	Common Cordyceps	10	
Common Ganoderma	Common Ganoderma	10	
Common Truffle	Common Truffle	10	
Common Morel	Common Morel	10	
Common Boletus	Common Boletus	10	
Common Amanita	Common Amanita	10	
Common Russula	Common Russula	10	
Common Lactaria	Common Lactaria	10	
Common Clavaria	Common Clavaria	10	
Common Marasmius	Common Marasmius	10	
Common Stropharia	Common Stropharia	10	
Common Psilocybe	Common Psilocybe	10	
Common Panaeolus	Common Panaeolus	10	
Common Coprinus	Common Coprinus	10	
Common Conocybe	Common Conocybe	10	
Common Microgaster	Common Microgaster	10	
Common Nudaria	Common Nudaria	10	
Common Scleroderma	Common Scleroderma	10	
Common Geoglyphus	Common Geoglyphus	10	
Common Paroloma	Common Paroloma	10	
Common Puffball	Common Puffball	10	
Common Stinkhorn	Common Stinkhorn	10	
Common Bird's-nest	Common Bird's-nest	10	
Common Honeycomb	Common Honeycomb	10	
Common Coral	Common Coral	10	
Common Brain	Common Brain	10	
Common Egg	Common Egg	10	
Common Saucer	Common Saucer	10	
Common Cup	Common Cup	10	
Common Shell	Common Shell	10	
Common Basket	Common Basket	10	
Common Spoon	Common Spoon	10	
Common Fan	Common Fan	10	
Common Comb	Common Comb	10	
Common Chain	Common Chain	10	
Common Snake	Common Snake	10	
Common Whip	Common Whip	10	

09/03/22

DERBYN - ADRAN CYLLUNIO

1:100	1:200	1:300	1:400	1:500	1:600	1:700	1:800	1:900	1:1000
1000	500	333	250	200	167	143	125	111	100
1000	500	333	250	200	167	143	125	111	100
1000	500	333	250	200	167	143	125	111	100
1000	500	333	250	200	167	143	125	111	100
1000	500	333	250	200	167	143	125	111	100
1000	500	333	250	200	167	143	125	111	100
1000	500	333	250	200	167	143	125	111	100
1000	500	333	250	200	167	143	125	111	100
1000	500	333	250	200	167	143	125	111	100
1000	500	333	250	200	167	143	125	111	100



EXISTING VIEW ALONG A4086

- Information to be read in conjunction with the following:
- Tree Protection plan (drawing reference CW/9038-P-TP Cheshire Woodlands)
 - Tree Survey schedule (document reference CW/9038-SS3 Cheshire Woodlands)
 - Landscape proposals (drawing reference 22/01/LP/001 Tirlun Barr)
 - jm drawing 6859-JMA-01-ZZ-DR-A-00-00-0001_Proposed site plan

Extent of building to be demolished

All other related design drawing information and documentation

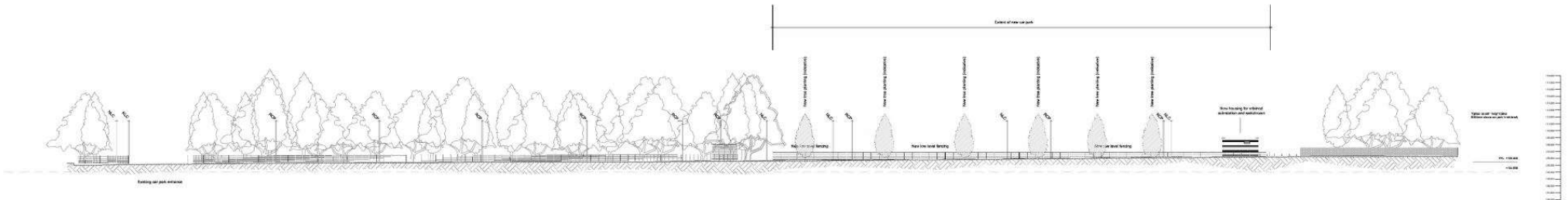
1	Issue for Information	2/2/22	jm
2	Issue for Approval	15/03/22	jm
3	Issue for Construction	09/03/22	jm

jmarchitects

5162 Liberty - Proposed for Block Extension
 Planning Application Form
 Drawings
 6859-JMA-22-01-A-07-001
 DRAWING 06 35
 11th Nov 22

09/03/22
DERBYN - ADRAN CYNLLUNIO

NO	REVISION	DATE	BY	CHKD
1	Issue for information	09/03/22	jm	jm
2	Issue for construction	09/03/22	jm	jm



PROPOSED VIEW ALONG A4088

Information to be read in conjunction with the following:
 Tree Protection plan (drawing reference CW/9038-P-TP Cheshire Woodlands)
 Tree Survey schedule (document reference CW/9038-SS3 Cheshire Woodlands)
 Landscape proposals (drawing reference 22/01/LP/001 Tirlun Barr)
 jm drawing 8859-JMA-01-ZZ-DR-A-00-00-0001_Proposed site plan

All other related design drawing information and documentation



Precedent for new low level fencing type (boundary to new car park)

Key to drawing

RCP New replacement lighting column (utilising existing position)

NLC New lighting column

New tree planting (indicative)
 Refer to separate drawing for position and species information

NO	REVISION	DATE	BY	CHKD
1	Issue for information	09/03/22	jm	jm
2	Issue for construction	09/03/22	jm	jm

jmarchitects

SWG Jersey - Proposed for New Car Park
 "Proposed car park elevation" New Car Park
 Drawn by
 8859-JMA-22-LP-A-07-0002
 2208240 06 35
 11/03/22





40



am milltir
for
2.3 mile

40

am milltir
for
2.3 mile

