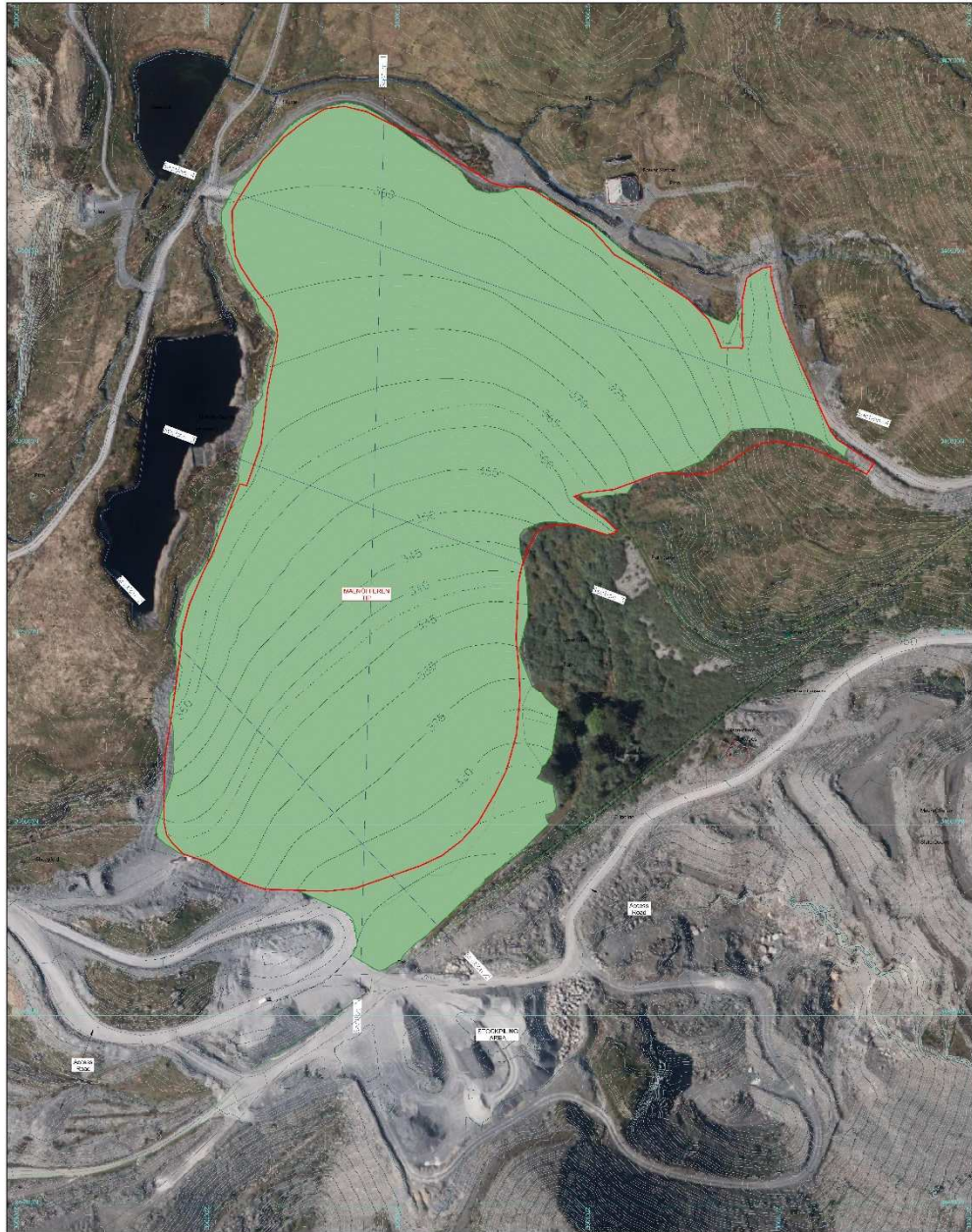


# **C20/0979/03/RA**

**Cais o dan A.73 i diddymu amod 2 (cyfyngiad amser) ac amrywio amod 3 (cynlluniau wedi eu diweddarau ar gyfer symud deunydd, adfer ac ôl-ofal y safle) ar ganiatad cynllunio C99M/0105/03/MW ar gyfer symud deunydd o ddyddodion gweithio mwynau**

**Application under S.73 to remove condition 2 (time limit) & vary to condition 3 (updated plans for the removal of material, restoration and aftercare of the site) on planning permission C99M/0105/03/MW for The Removal of Material from a mineral-working deposit**

**Spoil Heap 557m From Quarry Tours Ltd, Llechwedd Slate Caverns 115m From Unnamed Road Bodafon, Blaenau Ffestiniog, LL41 3NB**



01.001

**WELSH SLATE  
& STONE LTD**

Key Geo Solutions Ltd  
 10, The Quadrant, Cardiff, CF10 1AT  
 Tel: 0300 000 0000  
 Fax: 0300 000 0000  
 Email: info@keygeo.co.uk

Key Geo Solutions Ltd  
 10, The Quadrant, Cardiff, CF10 1AT  
 Tel: 0300 000 0000  
 Fax: 0300 000 0000  
 Email: info@keygeo.co.uk

PROJECT: MAENOFFEREN QUARRY  
LLECHWEDD SLATE MINE

TITLE: PROPOSED RESTORATION  
PLAN FOR  
MAENOFFEREN TYP

Client:	WR	Checked:	BD	Date:	Nov 20
Scale:	1:1250	Checked (By):	GC	Stage:	DRAFT
Drawn by:		Drawn (By):		Drawn (By):	

19-404-D-002 01





**LEGEND**

- Boundary of Planning Permission reference C99M/0105/03/MW
- Tip boundary
- Approximate alignment of Public Footpath

Northern Welsh Quarries Ltd

Maenofferen Quarry  
Llechweidi Slate Mine

**Existing Situation at Maenofferen Tip**

1:1250 @ A3	KH	Nov 20
1:3500 @ A4		

L13\_LAN\_001







