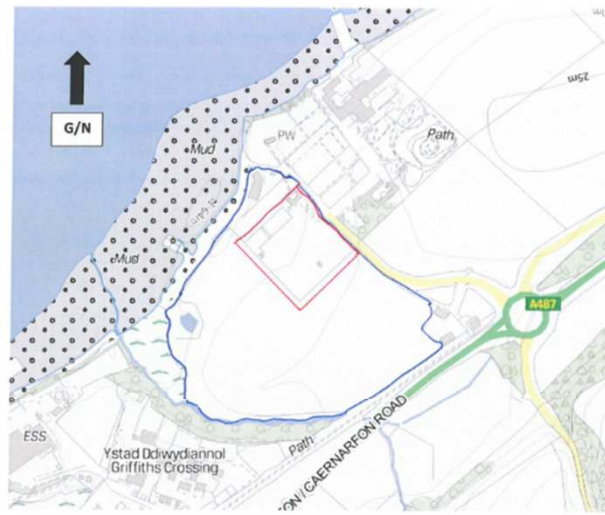


# **C20/0222/20/LL**

**Dymchwel stablau presennol a chodi stablau newydd ynghyd â chodi adeilad ysgol farchogaeth dan do, manege a seilwaith cysylltiol (gan gynnwys ad-drefnu'r trefniadau mynediad a pharcio)/Demolition of existing stables and the erection of new stables in addition to the erection of an indoor riding arena, manege and associated infrastructure (including the re-alignment of the access and parking arrangements)**

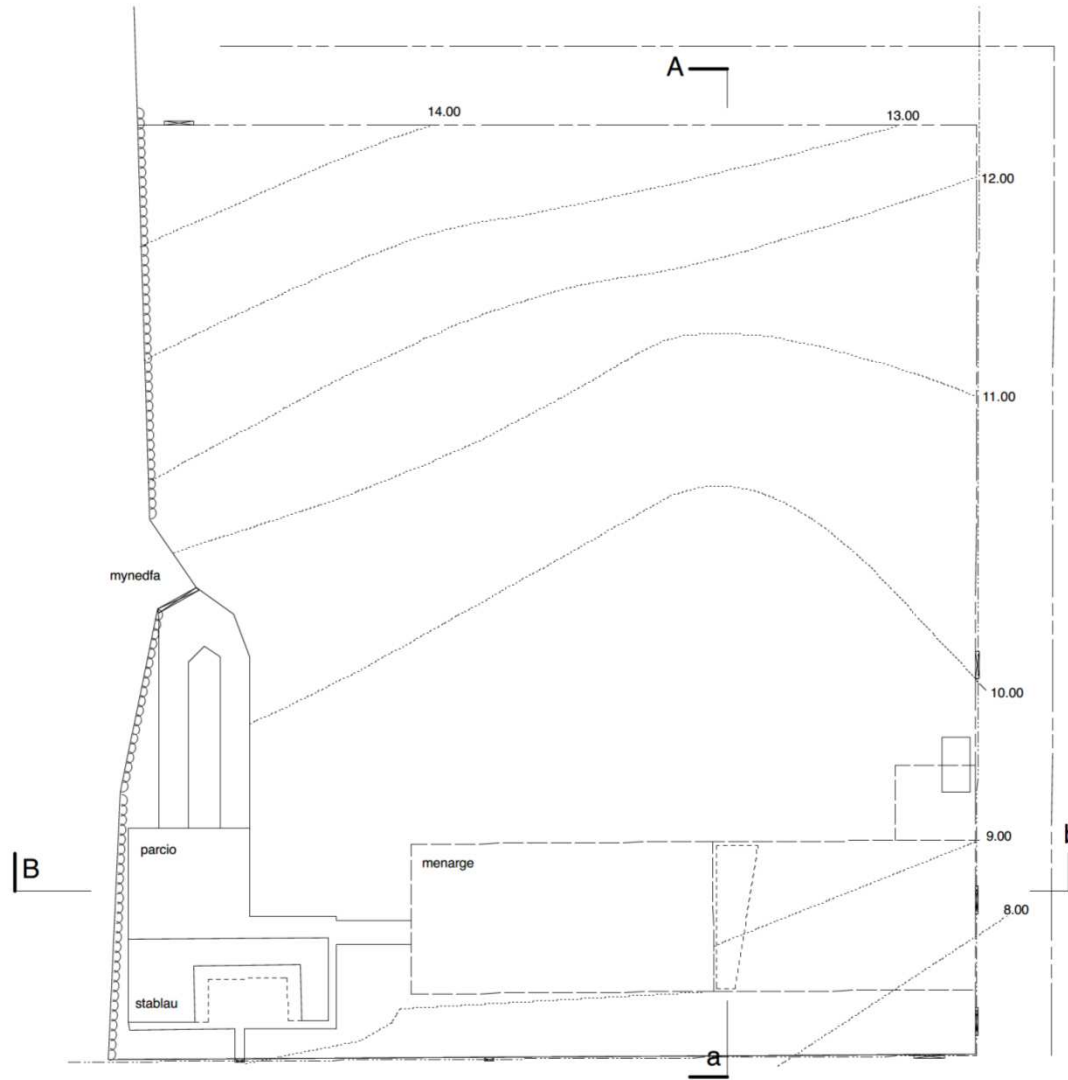
**Swn y Mor, Caernarfon, LL55 1UE**

Sŵn y Môr, Llanfair IsGaer, Caernarfon LL55 1TS – Cynllun Lleoliad/Location Plan



Graddfa/Scale 1:5000

Flynhonnell/Source: lle.llyw.cymru (hawffraint y map gwreiddiol Arolwg Ormans/copyright of original map held by Ordnance Survey). Mae'r seilfap yn cynnwys gwybodaeth sector gyhoeddus sydd wedi ei drwyddedu dan Drwydded Llywodraeth Agored f2.0./The base map contains public sector information licensed under the Open Government Licence v2.0.



NODYN  
 Yr adelladydd i gynnwys darpariaeth ar gyfer storio, ailgylchu  
 a rheoli gwastraff yn ystod y cyfnod adeiladu a meddiannaeth.  
 Lleoliad i'w gytuno cyn i'r gwaith safle gychwyn

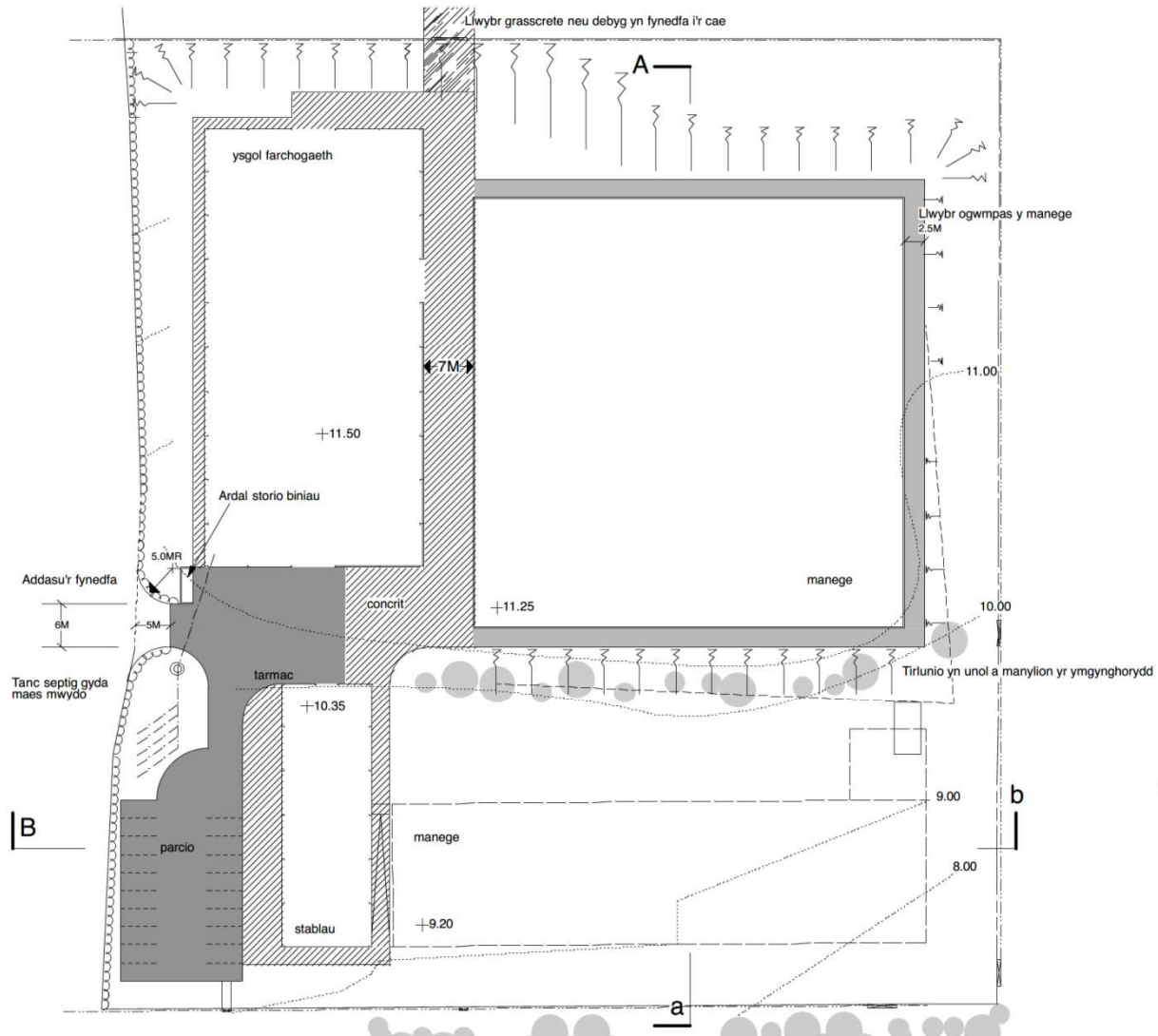


[--]01  
 safle presennol/existing site  
 1:500@A3

Job: 380/01.20

swn y mor  
 griffiths crossing  
 gwynedd  
 ll55 1ts

maredudd ab iestyn RIBA  
 pensaer / architect  
 02920 318855  
 07850 092883  
 abiestyn@btinternet.com

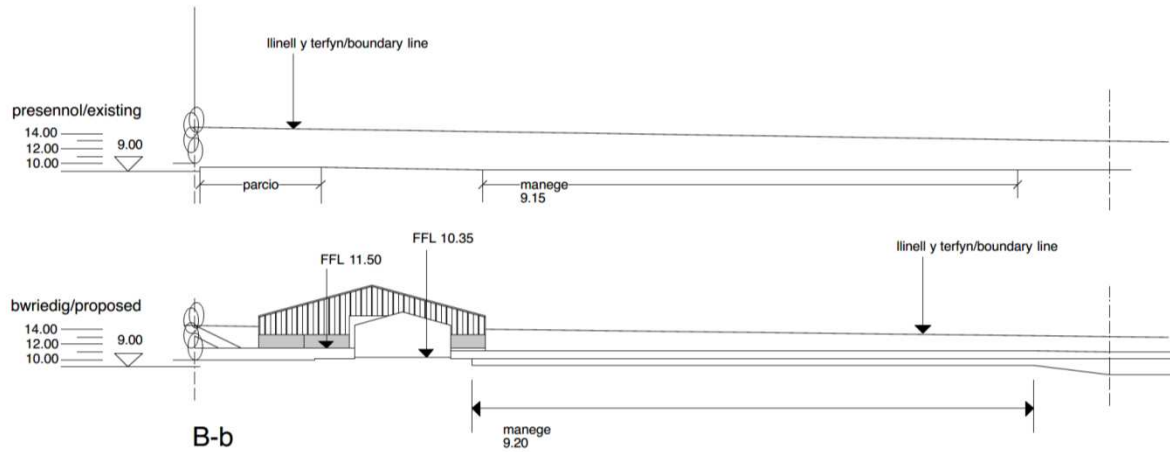
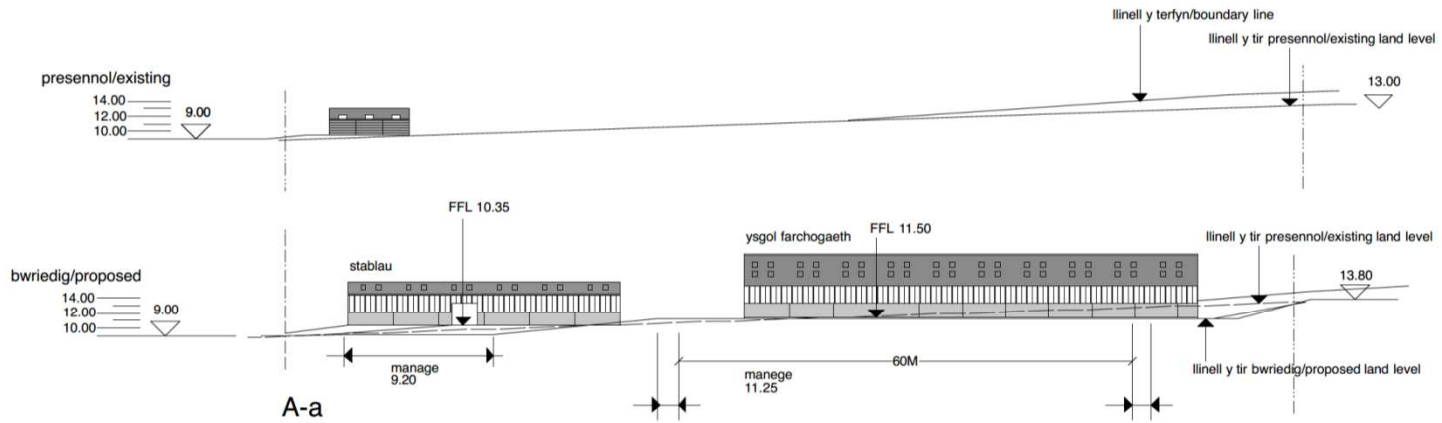


[9]-J01  
 safle bwriedig/proposed site  
 1:500@A3

Job: 380/01.20

swn y mor  
 griffiths crossing  
 gwynedd  
 ll55 1ts

maredudd ab iestyn RIBA  
 pensaer / architect  
 02920 318855  
 07850 092883  
 abiestyn@btinternet.com

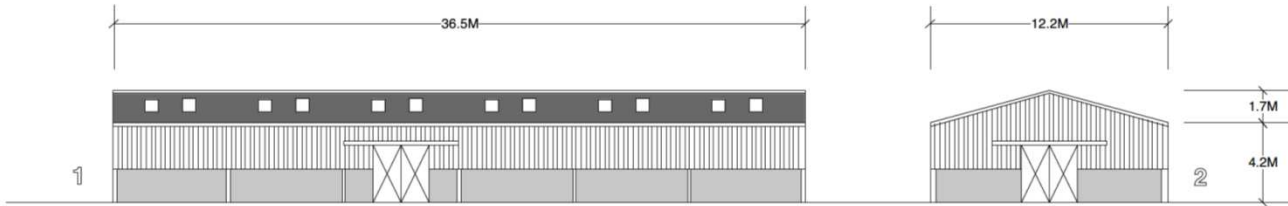


[9-]02  
 safle bwriedig/proposed site  
 1:500@A3

Job: 380/01.20

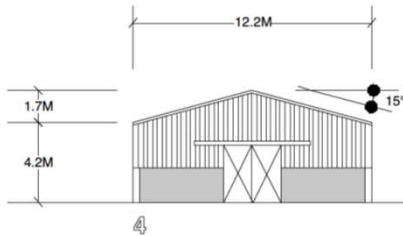
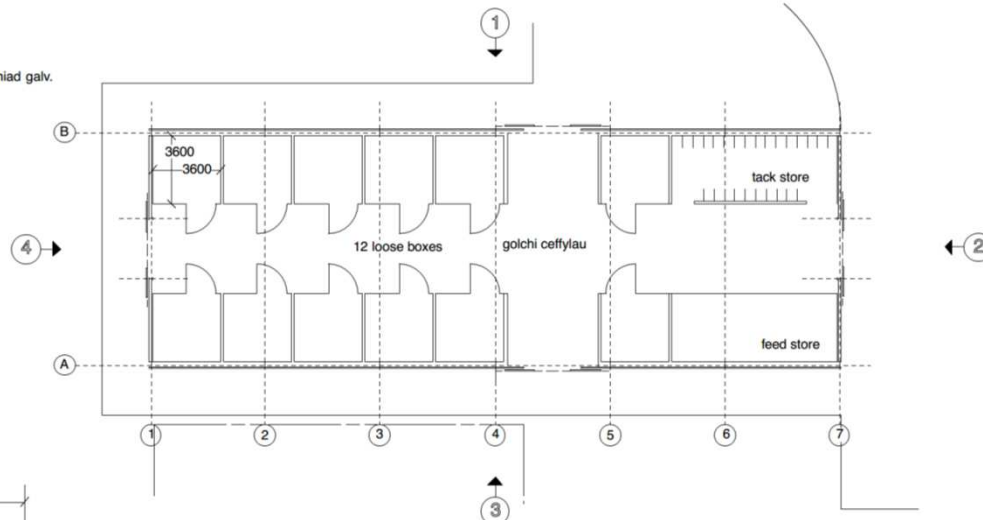
swn y mor  
 griffiths crossing  
 gwynedd  
 ll55 1ts

maredudd ab iestyn RIBA  
 pensaer / architect  
 02920 318855  
 07850 092883  
 abiestyn@btinternet.com

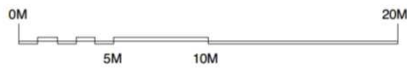
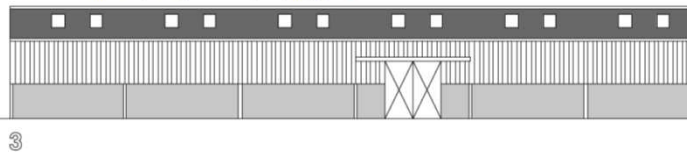


Adeiladau amaethyddol i BS5502 ClassII

- TO: Shitiau sment ffibr llw glas 'Slate Blue'  
Ffenestri to o shitiau clir
- WALIAU: Lefel uchaf o fyrddau pren 150x25  
Lefel isaf o baneli concrit llw naturiol
- DRYSAU: Drysau lithro pwrpasol o shitiau dur gorfenniad galv.
- GWTERI: Dur weedi ei galfanecidlo- llw naturiol
- PIBELLI: Pibelli dwr glaw 100mmø PVC llw llwyd



Bocsus nythu adar i'w gosod ar waliau allanol yr adellad newydd.  
Y nifer a'r math i'w cytuno gyda'r ecolegydd ymgynghorol

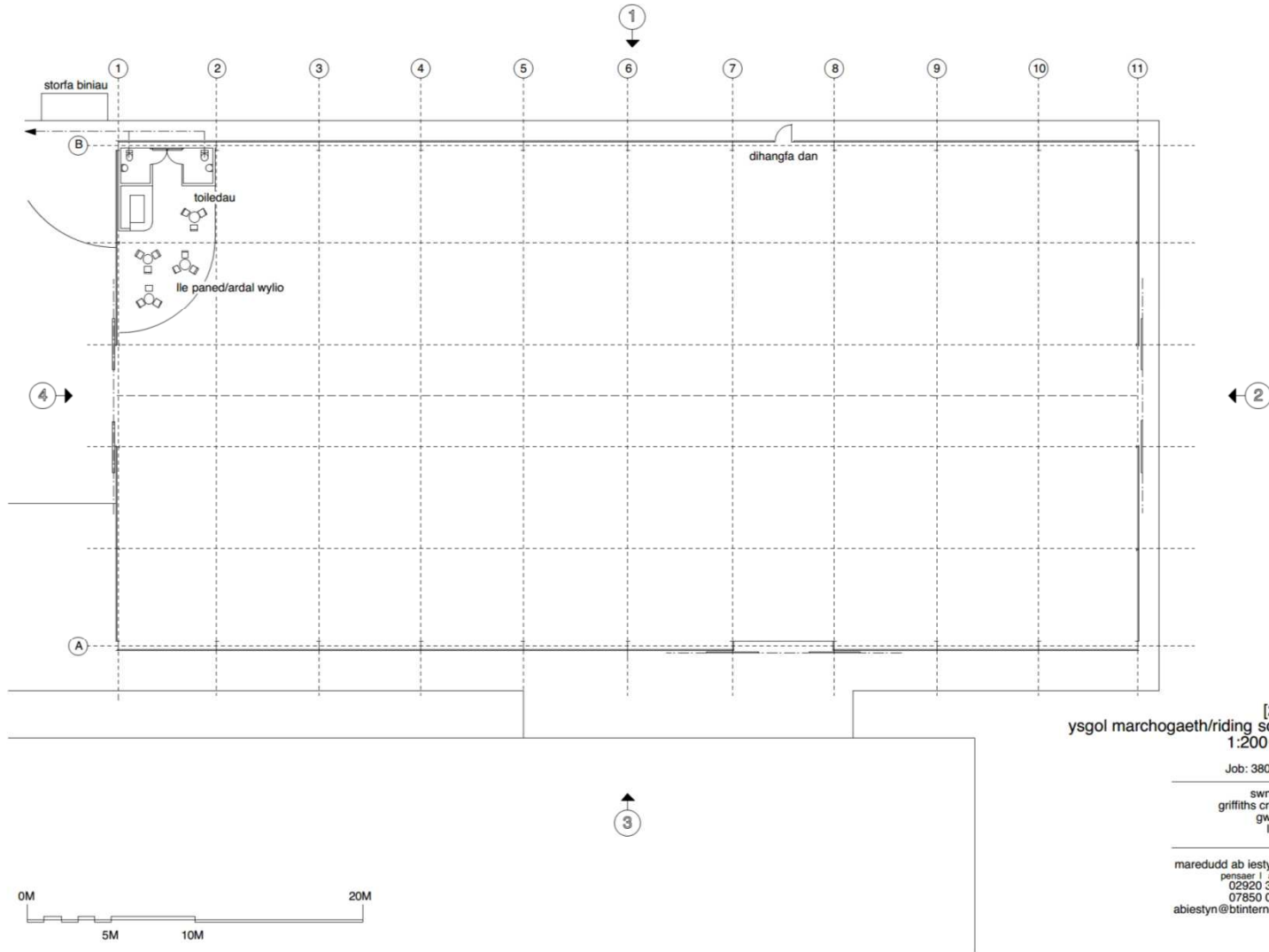


[2]-101  
stablau/stable block  
1:200@A3

Job: 380/01.20

swn y mor  
griffiths crossing  
gwynedd  
1155 1ts

maredudd ab iestyn RIBA  
pensaer i architect  
02920 318855  
07850 092883  
abiestyn@btinternet.com

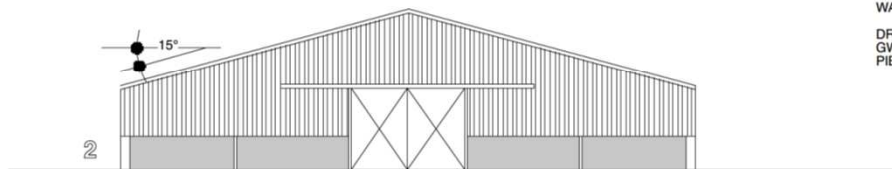


[2]-J02  
 ysgol marchogaeth/riding school  
 1:200@A3

Job: 380/01.20

swm y mor  
 griffiths crossing  
 gwynedd  
 ll55 1ts

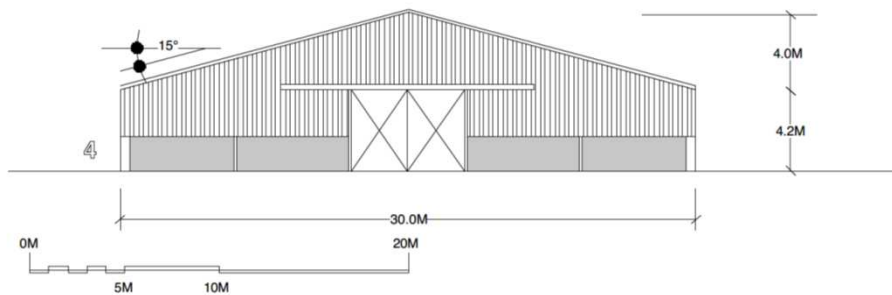
maredudd ab iestyn RIBA  
 pensaer i architect  
 02920 318855  
 07850 092863  
 abiestyn@btinternet.com



Adelladau amaethyddol i BS5502 ClassII

- TO: Shitiau sment ffibr liw glas 'Slate Blue'  
 Ffenestri to o shitiau cilr  
 WALIAU: Lefel uchaf o fyrddau pren 150x25  
 Lefel isaf o baneli concrtll liw naturiol  
 DRYSAU: Drysau llithro pwrpasol o shitiau dur gorfenniad galv.  
 GWTERI: Dur wedi ei galfaneiddio- liw naturiol  
 PIBELLI: Pibelli dwr glaw 100mme PVC liw llwyd

Bocsus nythu adar i'w gosod ar waliau allanol yr adellad newydd.  
 Y nifer a'r math i'w cytuno gyda'r ecolegydd ymgynghorol



[2-]03  
 ysgol marchogaeth/riding school  
 1:200@A3

Job: 380/01.20

swn y mor  
 griffiths crossing  
 gwyrneidd  
 ll55 11s

maredudd ab iestyn RIBA  
 pensaer i architect  
 02920 318855  
 07850 092883  
 abiestyn@btinternet.com















