

Rhif y Cais / Application Number : C15/0662/09/LL

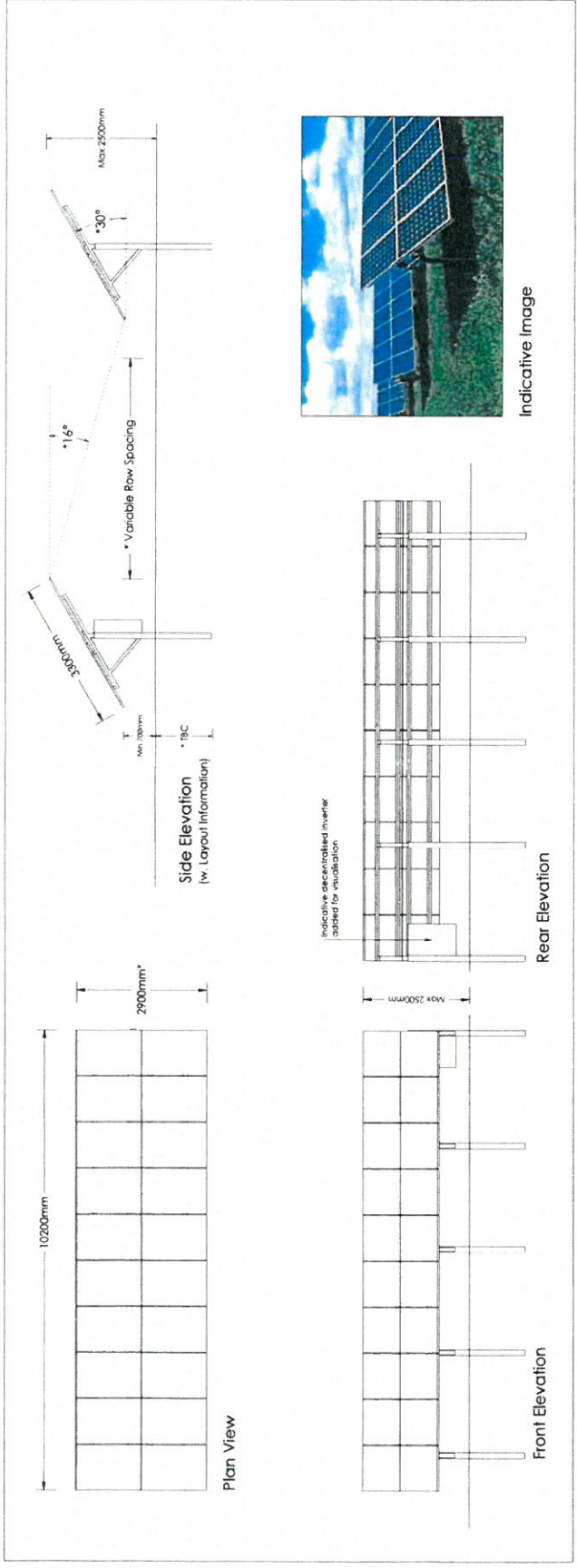
Cynllun lleoliad ar gyfer adnabod y safle yn unig. Dim i raddfa.  
Location Plan for identification purposes only. Not to scale.



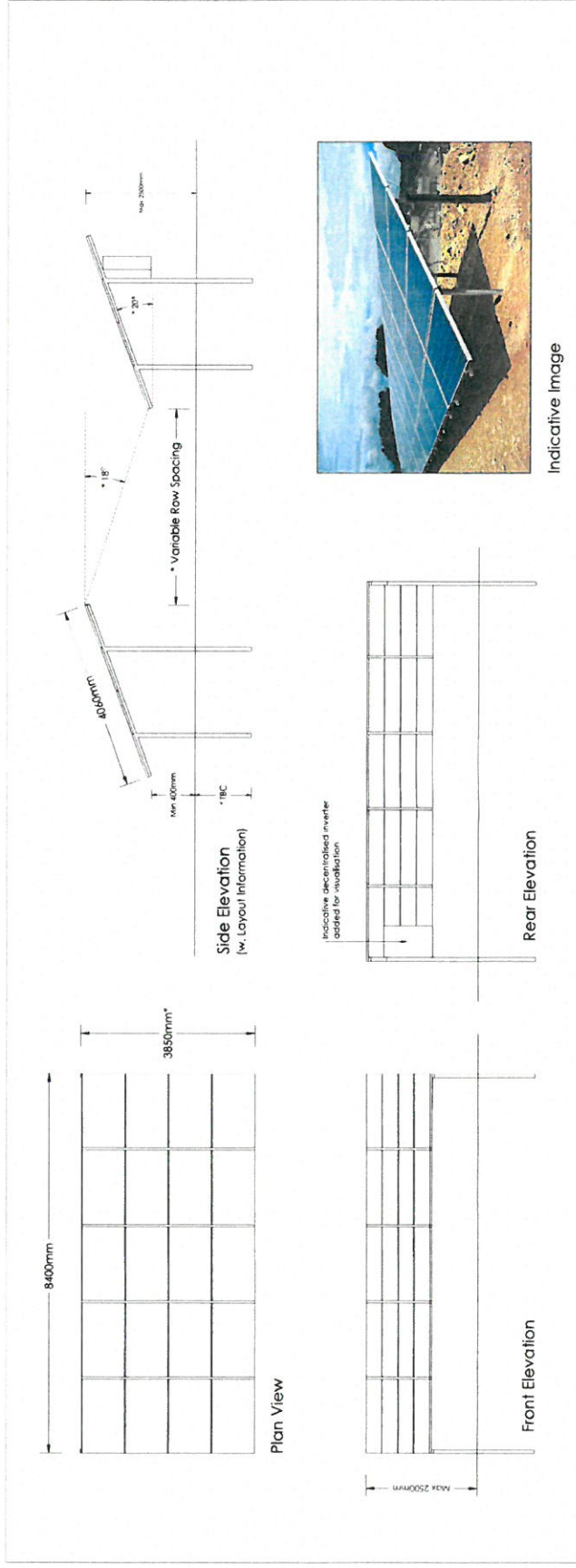
Atgynhyrchir y map hwn o Ddwydd yr Ordnance Survey gyda'r ornodio yr Ordnance Survey ar ran Rheolwr Llyfrau E. I. Mawrdd. © Hawlfraint y Goron.  
Mae atgynhyrchu heb ganiatâd yn torri hawlfraint y Goron a gallhyn arwain at achlysiad neu achos sifil.  
Dyngor Gwynedd - 100023387 - 2008

This map is reproduced from Ordnance Survey material with the permission of Ordnance Survey on behalf of the Controller of Her Majesty's Stationery Office.  
© Crown copyright.  
Unauthorized reproduction infringes Crown copyright and may lead to prosecution or civil proceedings.  
Dyngor Gwynedd - 100023387 - 2008





Indicative Panel Layout Arrangement (10x2P) 2 Rows Portrait



Indicative Panel Layout Arrangement (5x4L) 4 Rows Landscape

**NOTES**

- \* Variable row spacing
- \* Variable element
- \* Module pitch may vary from 15°-35°
- \* Row spacing height will vary dependant on topography of land
- \* Module specifications vary to manufacturer requirements
- \* Pole length to be confirmed during detailed design

Every effort has been made to ensure the accuracy of the information provided on this figure. Novus cannot be held responsible for any errors or omissions. The information is provided by third parties and hereby expressly disclaims any responsibility for any loss, damage, injury, or other consequences arising from the information contained on this figure.

This document is property of Novus Solar. It is not to be reproduced, stored, copied, or used in any manner without the prior written permission of Novus Solar. Any unauthorized use or distribution is strictly prohibited. Novus Solar reserves the right to modify this document without notice.

2024/11/15 Panel layout drawings 2  
 A | Rev: 0001 | Iss: 0001 | File: 10x2P 2 Rows

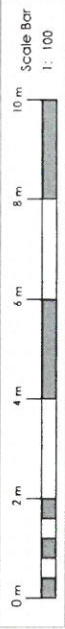


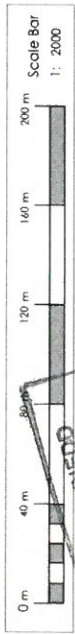
Novus Solar  
 Developments Ltd

Morfa

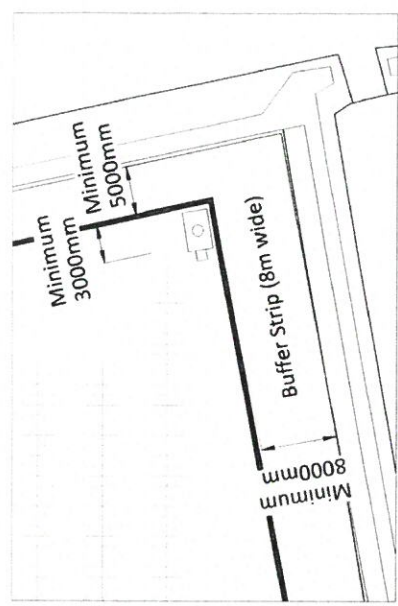
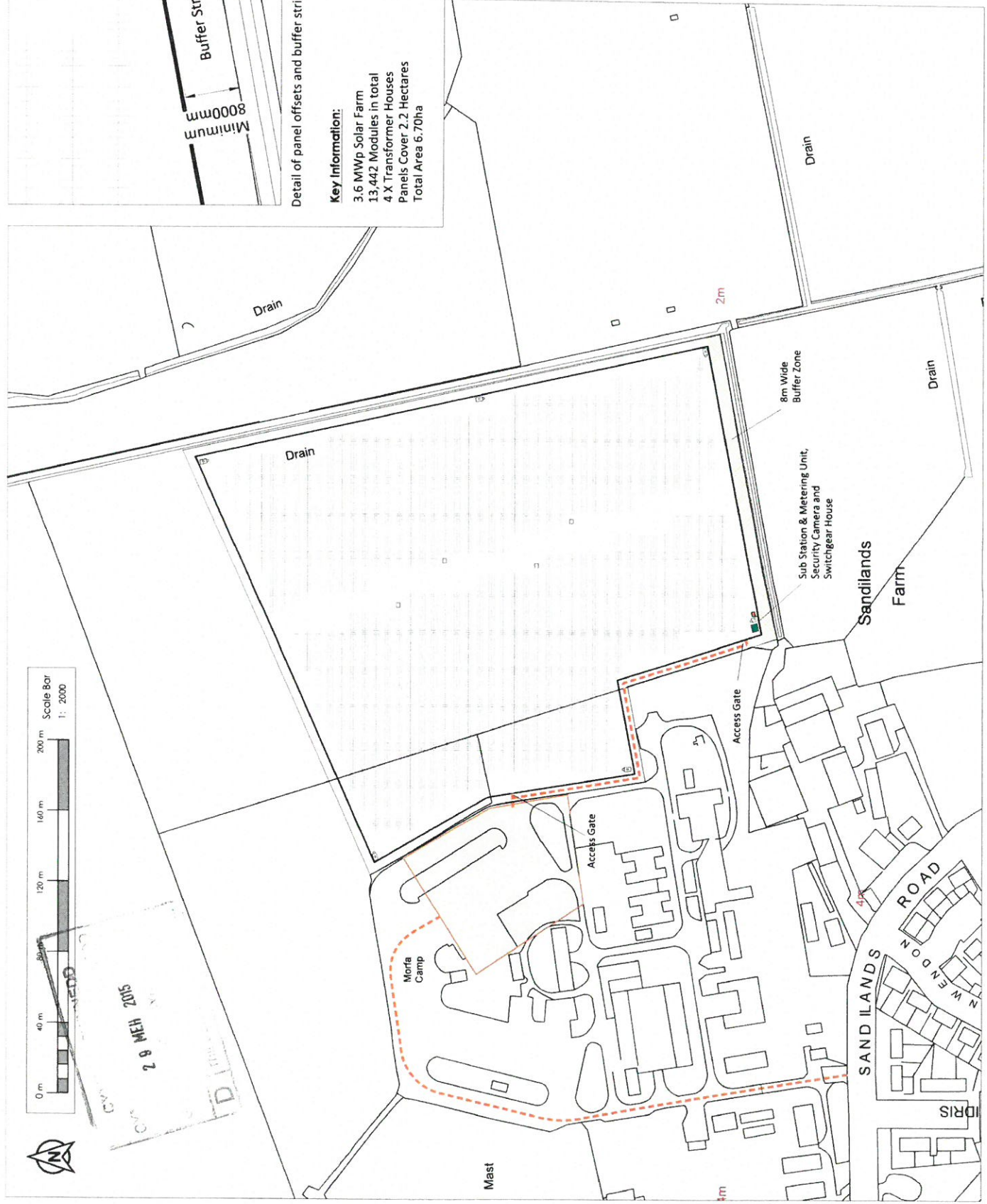
Indicative Panel  
 Layout Arrangements

DATE	2024/11/15	NO. OF SHEETS	102	OF	102
REVISED		NO. OF SHEETS	0	OF	102
DATE	2024/11/15	NO. OF SHEETS	102	OF	102
REVISED		NO. OF SHEETS	0	OF	102
NO.	1137	DATE	11/37/02	NO.	B





29 MEH 2015



Detail of panel offsets and buffer strip (1:500)

**Key Information:**  
 3.6 MWp Solar Farm  
 13,442 Modules in total  
 4 X Transformer Houses  
 Panels Cover 2.2 Hectares  
 Total Area 6.70ha

**Key:**

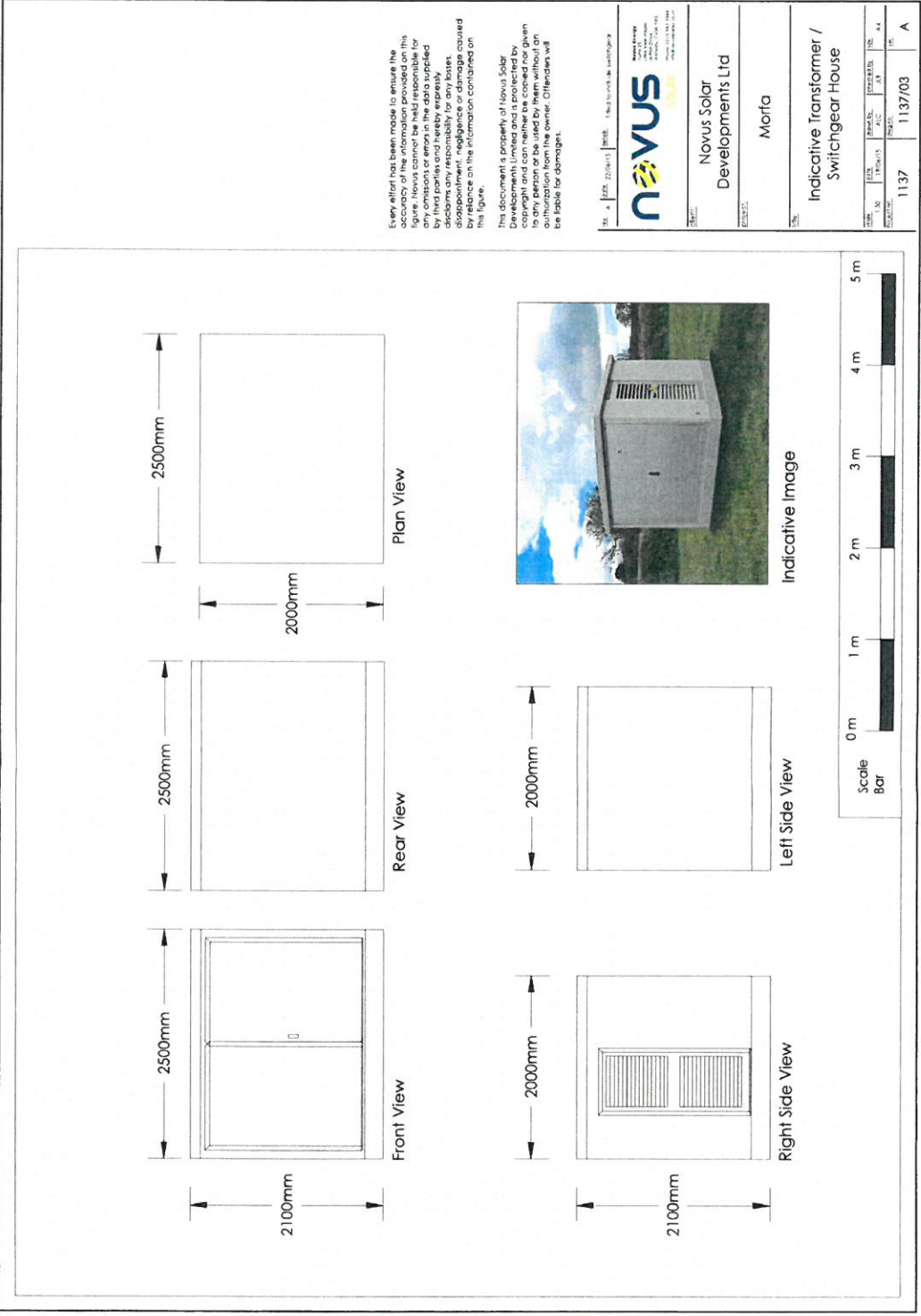
- Proposed Solar PV
- Security Cameras
- Temporary Compound Area
- Transformer Housing 2500mmx2000mm
- Sub Station & Metering Unit 4360mmx3580mm x2710mm high
- Access route
- Fence Boundary
- Switchgear House 2500mmx2000mm

Novus Solar Developments Ltd  
 Morfa  
 Indicative Site Layout Plan

1137 1137/06 A



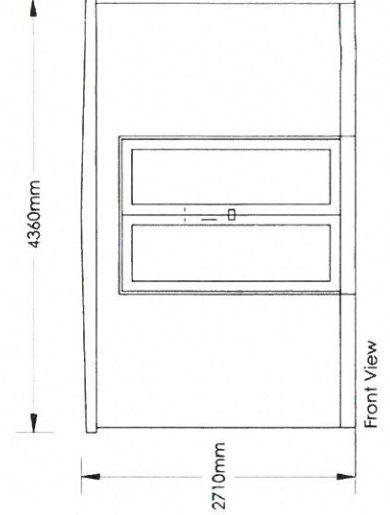
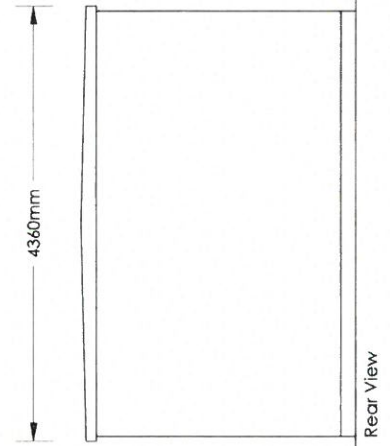
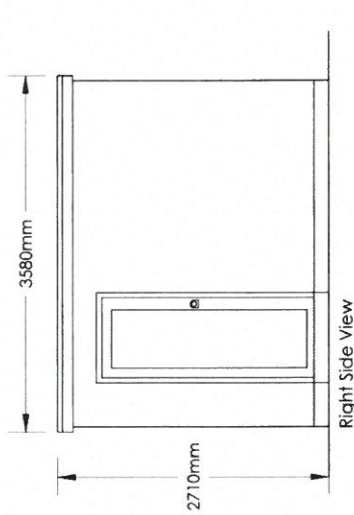
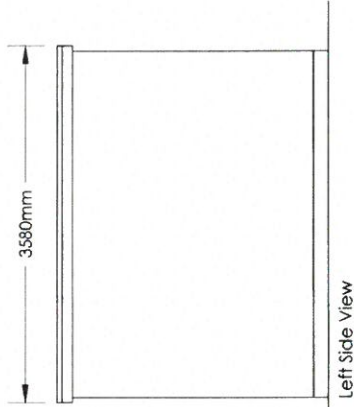
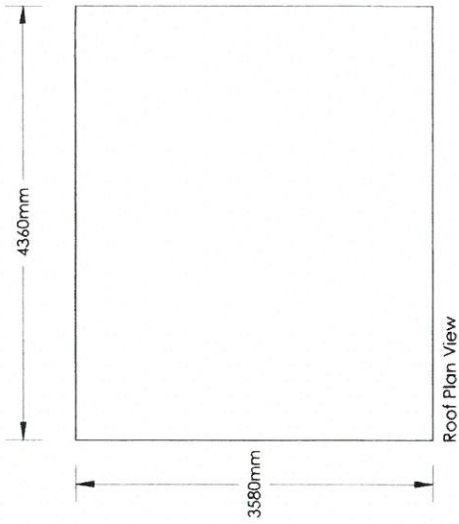
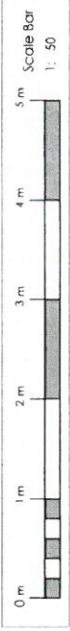
CYNGOR GWYBODAETHYDD  
 29 MEH 2015



Every effort has been made to ensure the accuracy of the information contained in this figure. Novus cannot be held responsible for any omissions or errors in the data supplied by third parties and hereby expressly disclaims any liability for any loss or damage, including consequential or indirect, arising out of or in reliance on the information contained on this figure.

This document is property of Novus Solar Developments Limited and is protected by copyright and can neither be copied nor given to any person or be used by them without an express written authorisation from the owner. Offenders will be liable for damages.

Novus Solar Developments Ltd	
Morfa	
Indicative Transformer / Switchgear House	
1137	1137/03
A	A



CM  
 29 MEH 2015  
 MEDD

Every effort has been made to ensure the accuracy of the information contained in this figure. Novus cannot be held responsible for any omissions or errors in the data supplied by third parties and hereby expressly disclaims any liability for any loss, damage, disappointment, negligence or damage caused by reliance on the information contained on this figure.

This document is property of Novus Solar Developments Limited and is protected by copyright and can neither be copied nor given in any form or by any means, electronic or mechanical, including photocopying, recording or by any information storage and retrieval system, without the prior written authorisation from the owner. Offenders will be liable for damages!

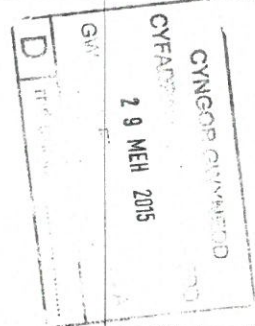
Novus Solar  
 Developments Ltd  
 Morfa

Combined Substation & Metering Unit (To meet DNO Requirements) (Brick)

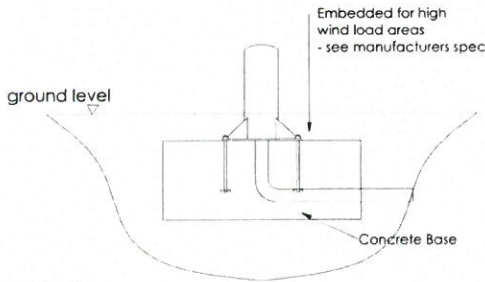
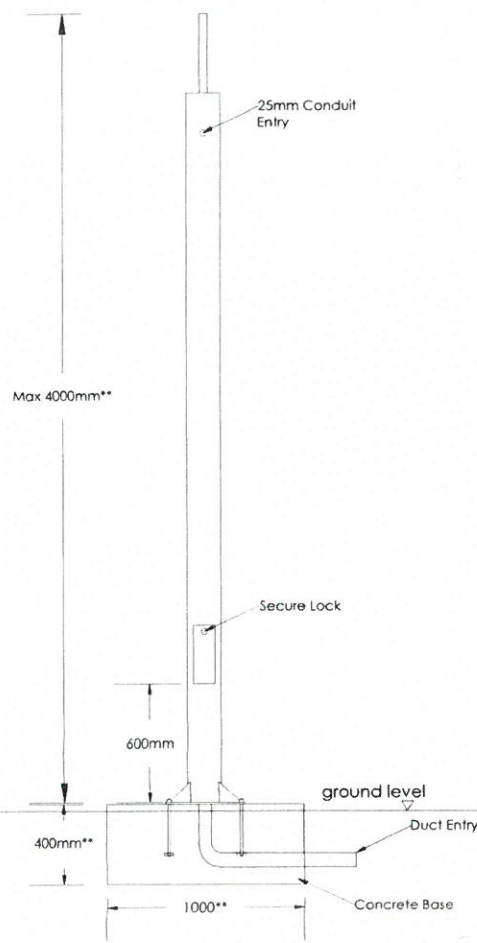
1137 1137/01 A



Notes  
 \*\* Dimensions vary on requirements of system - always refer to manufacturers specification for height and wind loading.



Indicative Image



Template for ball locations -  
 Size may vary depending on pole height  
 And wind loading conditions -  
 See manufacturers recommendation.

Every effort has been made to ensure the accuracy of the information provided on this figure. Novus cannot be held responsible for any omissions or errors in the data supplied by third parties and hereby expressly disclaims any responsibility for any losses, disappointment, negligence or damage caused by reliance on the information contained on this figure.

This document is property of Novus Solar Developments Limited and is protected by copyright and can neither be copied nor given to any person or be used by them without an authorisation from the owner. Offenders will be liable for damages.

Novus Solar Developments Ltd	
project: Morfa	
title: Indicative CCTV	
1137	1137/04