

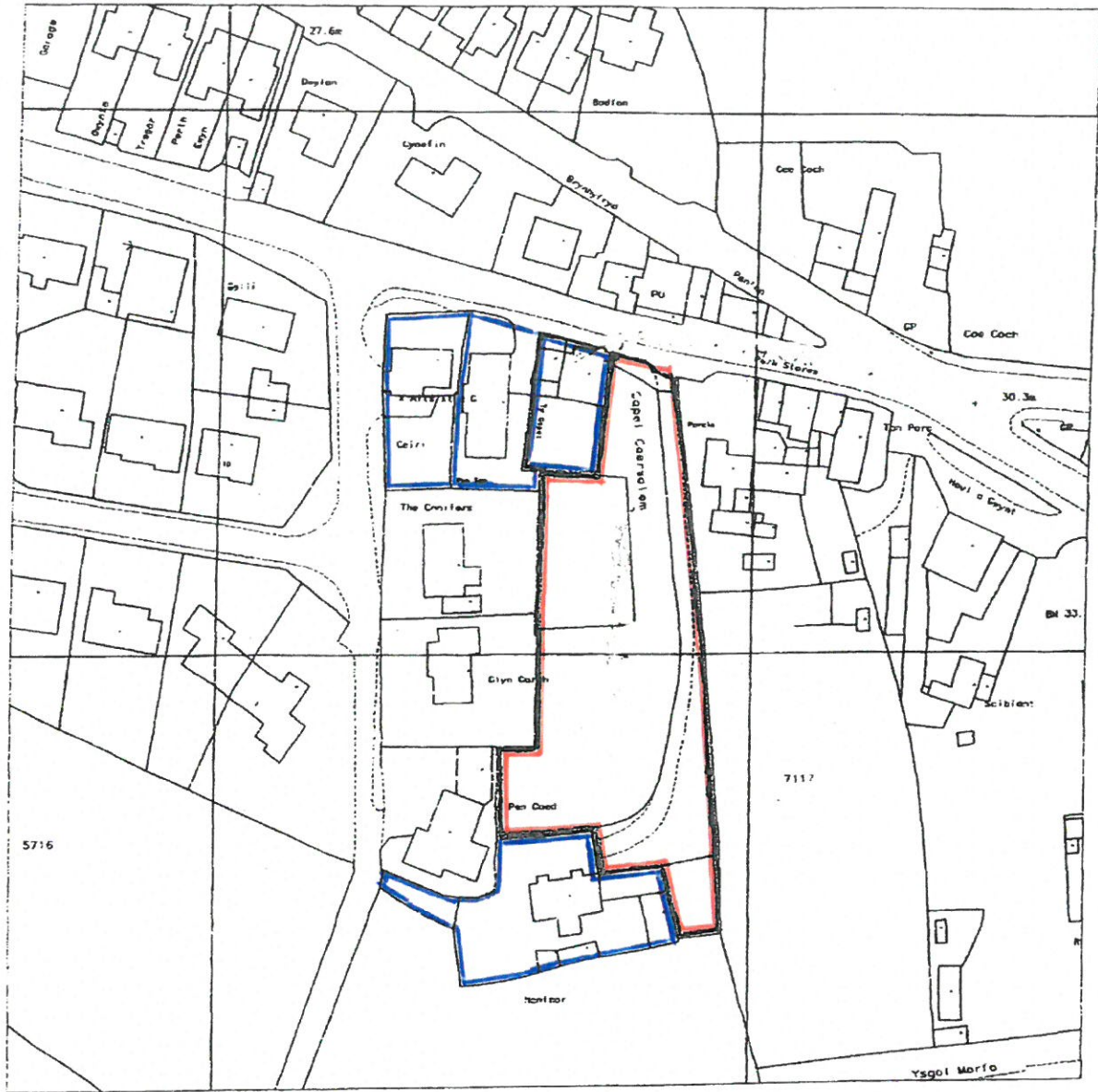
Rhif y Cais / Application Number : C15/0783/42/MG

Cynllun lleoliad ar gyfer adnabod y safle yn unig. Dim i raddfa.
Location Plan for identification purposes only. Not to scale.

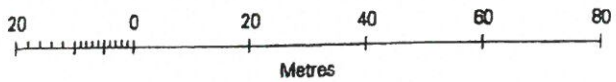


Atgynhyrchir y map hwn o Ddeunydd yr Ordnance Survey gyda chaniatâd yr Ordnance Survey ar ran Rheolwr Llyfrfa Eri Maswyrdd. © Hawlfraint y Goron.
Mae atgynhyrchu heb ganiatâd yn torri hawlfraint y Goron a gall hyn arwain at erlyniad neu achos siŵl.
Cynllun Gwynedd - 100023387 - 2006

This map is reproduced from Ordnance Survey material with the permission of Ordnance Survey on behalf of the Controller of Her Majesty's Stationery Office.
© Crown copyright.
Unauthorised reproduction infringes Crown copyright and may lead to prosecution or civil proceedings.
Cynllun Gwynedd - 100023387 - 2006



Produced 12 Jan 2006 from Ordnance Survey digital data and incorporating surveyed revision available at this date. © Crown Copyright 2006.



Reproduction in whole or in part is prohibited without the prior permission of Ordnance Survey.

Ordnance Survey and the OS symbol are registered trade marks and Siteplan a trade mark of Ordnance Survey, the national mapping agency of Great Britain.

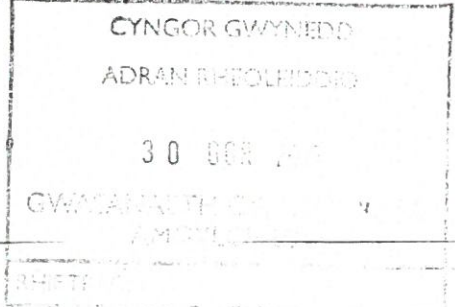
Part or all of this Siteplan is enlarged from mapping produced at one or more of the following scales 1:1250, 1:2500, 1:10000.



Centre Coordinates: 228662 340220

National Grid sheet reference at centre of this Siteplan: SH2840

Supplied by: Bookland and Co Ltd
Serial Number: 00024500



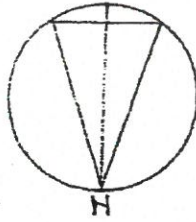
**Datbygiad Safle Capel Caersalem
Lon Terfyn, Morfa Nefyn, Gwynedd**

Cais Cynllunio: C06D/0703/42/AM

Caniatod dyddiedig: 09.08.2012

Rhif 00 - Cynllun Lleoliad

Dyddiad: 16 Gorffennaf 2015

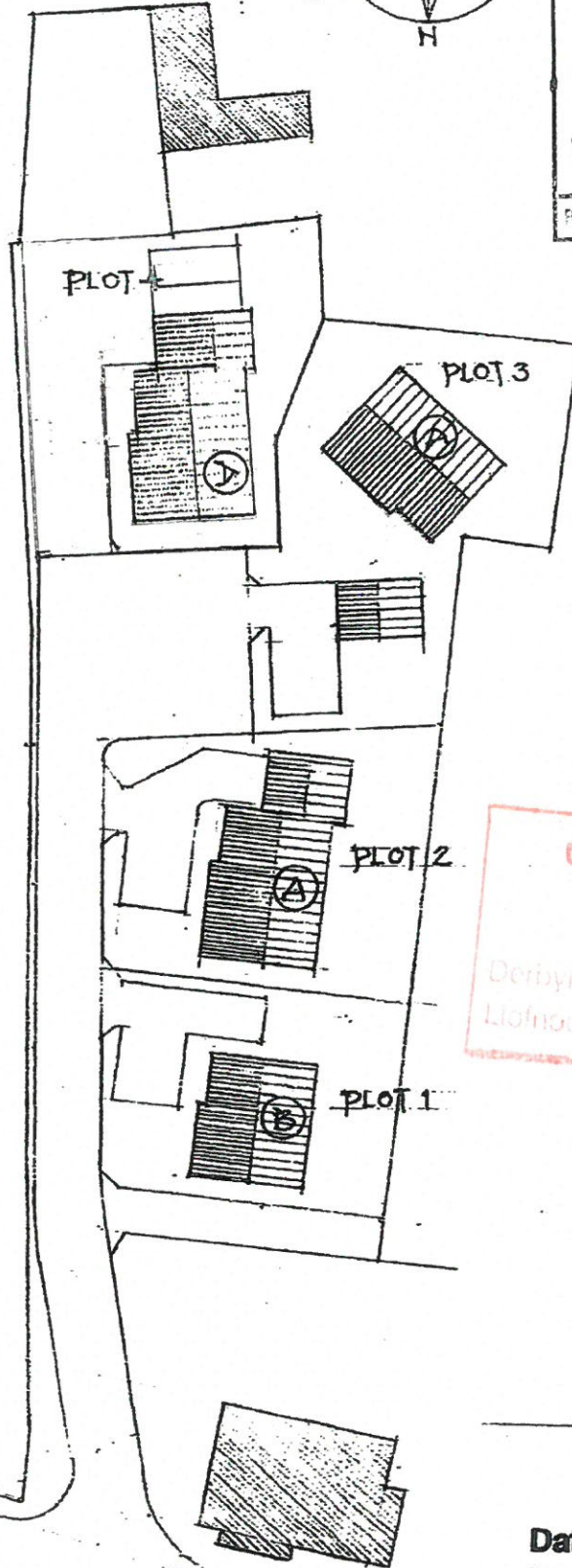


CYNGOR GWYNEDD
ADRAN RHEOLEIDDIO

11 AWST 2015

GWASANAETH CYNLLUNIO AC
ANGYLCHEDD

RHIF TRAC:

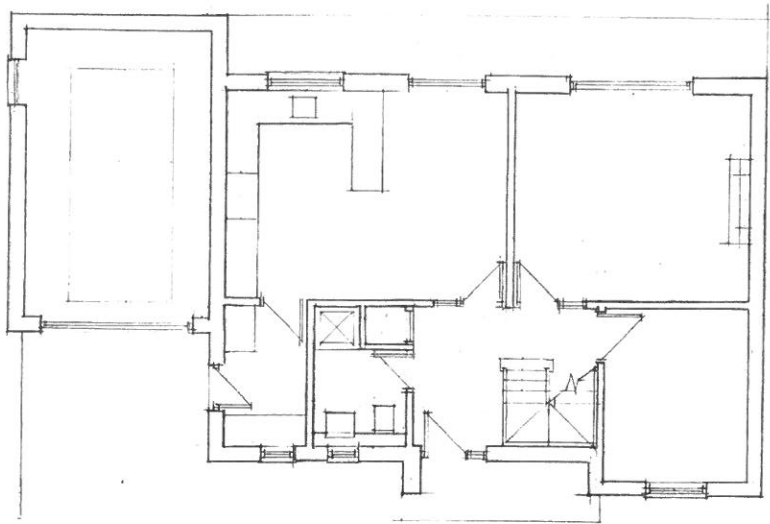


CYNLLUN DIWYGIEDIG
REVISED PLAN
Derbynwyd/Received 11/8/15
Llofnod/signature MEV

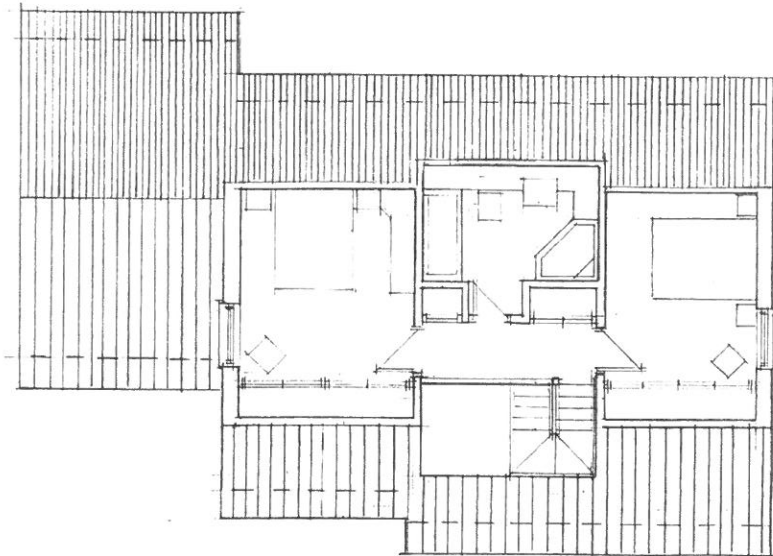
**Datbygiad Safle Capel Caersalem
Lon Terfyn, Morfa Nefyn, Gwynedd**

Cais Cynllunio: C06D/0703/42/AM
Caniatad dyddiedig: 09.08.2012

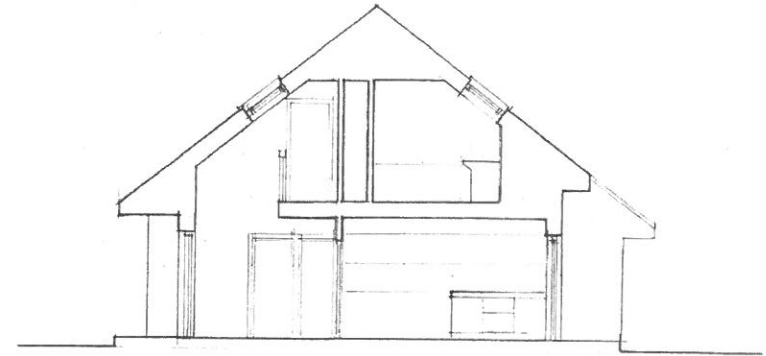
Rhif 01 B- Cynllun Safle Bwriededig
Graddfa 1:500 Dyddiad: 03 Gorffennaf 2015



• LLAWR ISAF



• LLAWR UCHAF



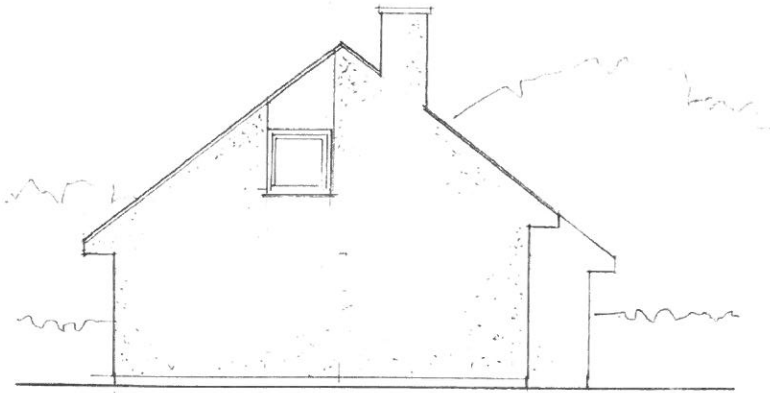
• TRAWSDORIAD



**Datbygiad Safle Capel Caersalem
Lon Terfyn, Morfa Nefyn, Gwynedd**

Cais Cynllunio: C06D/0703/42/AM
Caniatad dyddiedig: 09.08.2012

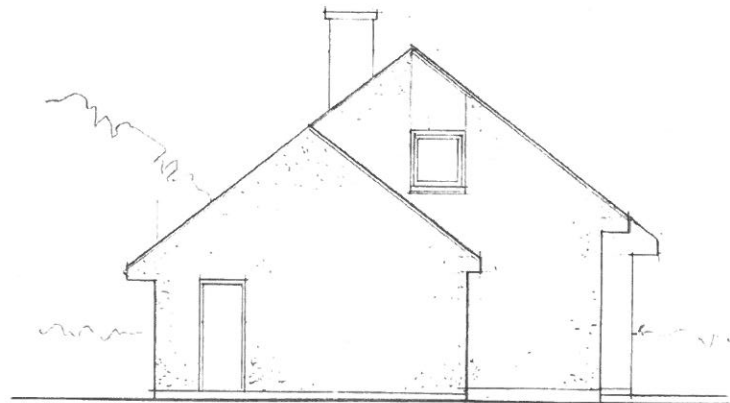
Rhif 02 - Cynllun Annedd A
Lloriau + Trawsdoriad
Graddfa 1:100 Dyddiad: 01 Mehefin 2015



• OCHR 1



• BLAEN



• OCHR 2



• CEFN

Finishes:

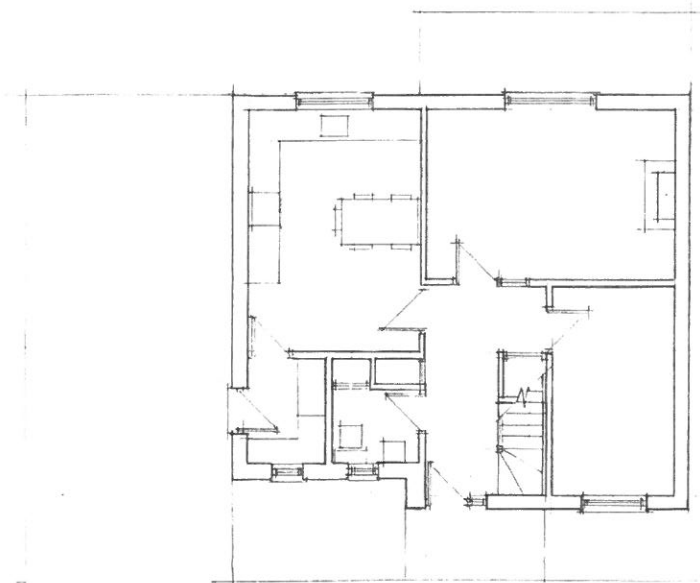
- Roofs: Natural slate
- Ext walls: White render
- Sills: Natural slate
- Rain water goods: White UPVC
- Doors and windows: White UPVC



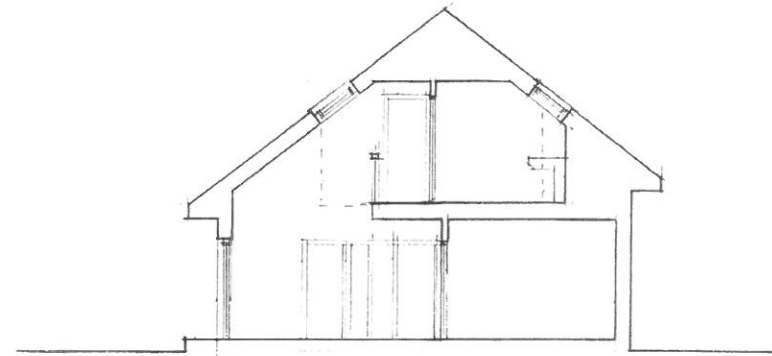
**Datbygiad Safle Capel Caersalem
Lon Terfyn, Morfa Nefyn, Gwynedd**

Cais Cynllunio: C06D/0703/42/AM
Caniatad dyddiedig: 09.08.2012

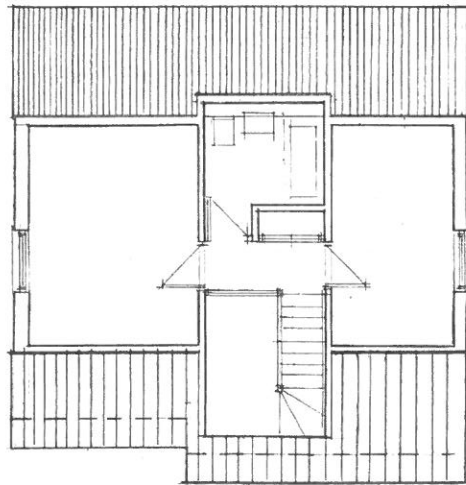
Rhif 03 - Cynllun Annedd A
Drychiadau
Graddfa 1:100 Dyddiad: 01 Mehefin 2015



• LLAWR ISAF



• TRAWSDORIAD



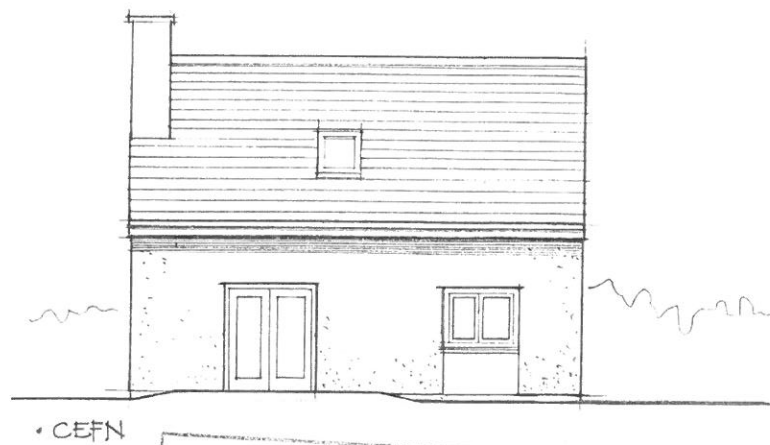
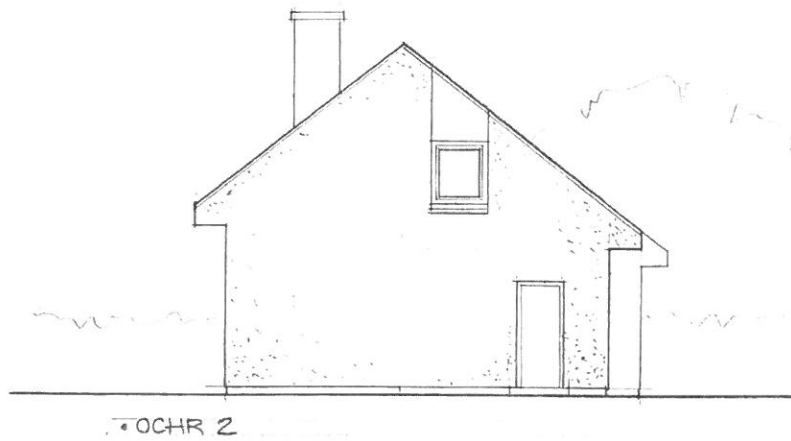
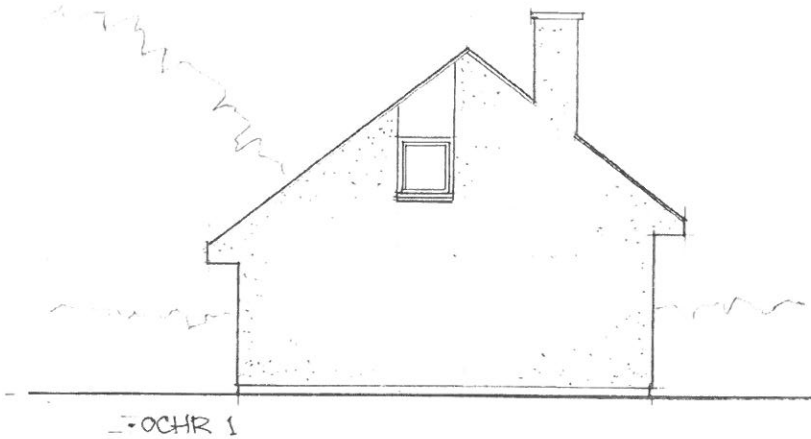
• LLAWR UCHAF



**Datbygiad Safle Capel Caersalem
Lon Terfyn, Morfa Nefyn, Gwynedd**

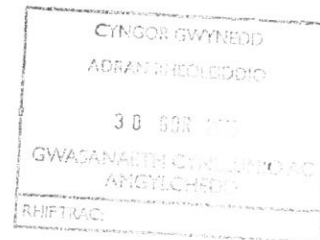
Cais Cynllunio: C06D/0703/42/AM
Caniatad dyddiedig: 09.08.2012

Rhif 04 - Cynllun Annedd B
Lloriau + Trawsdoriad
Graddfa 1:100 Dyddiad: 01 Mehefin 2015



Finishes:

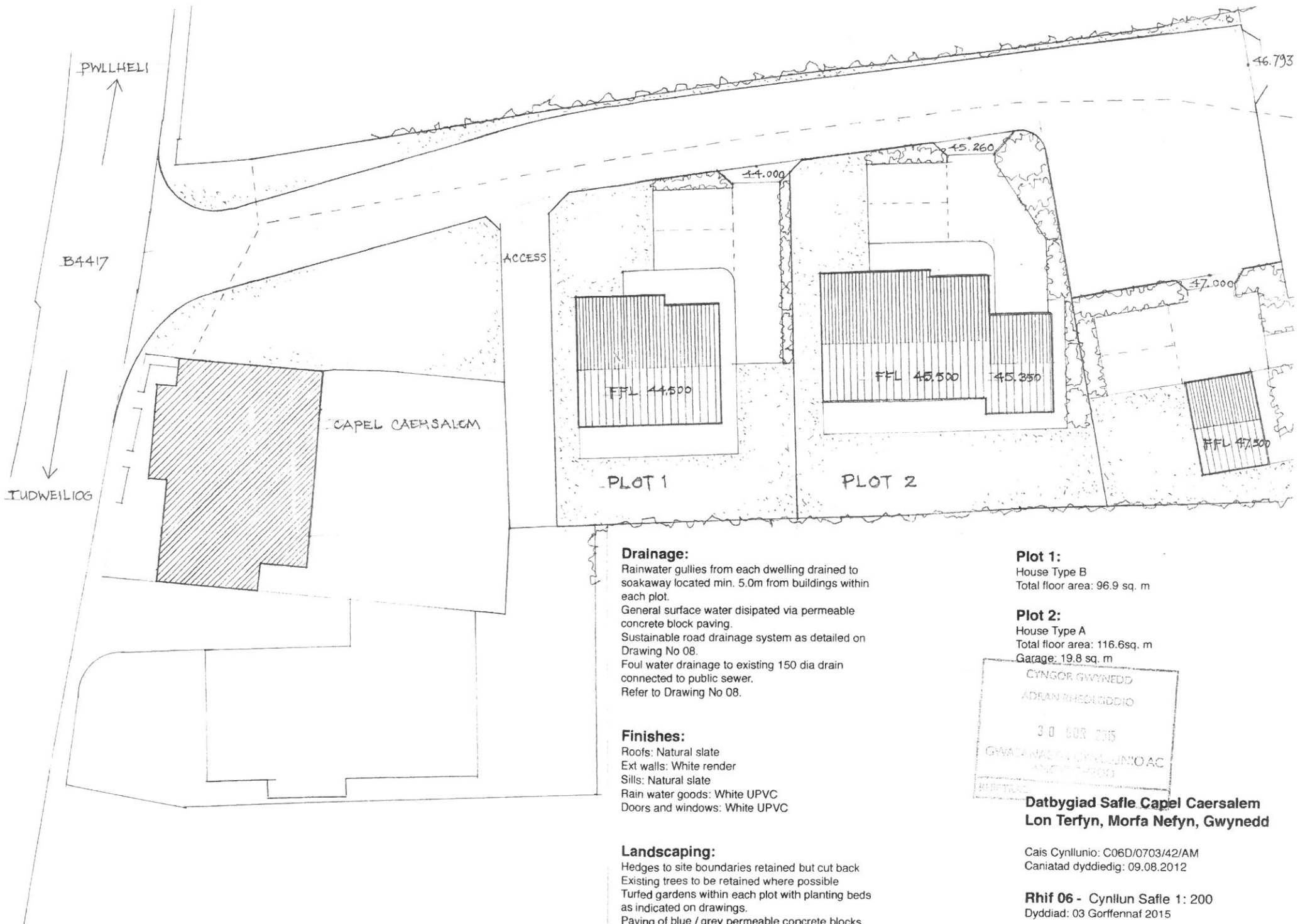
Roofs: Natural slate
 Ext walls: White render
 Sills: Natural slate
 Rain water goods: White UPVC
 Doors and windows: White UPVC

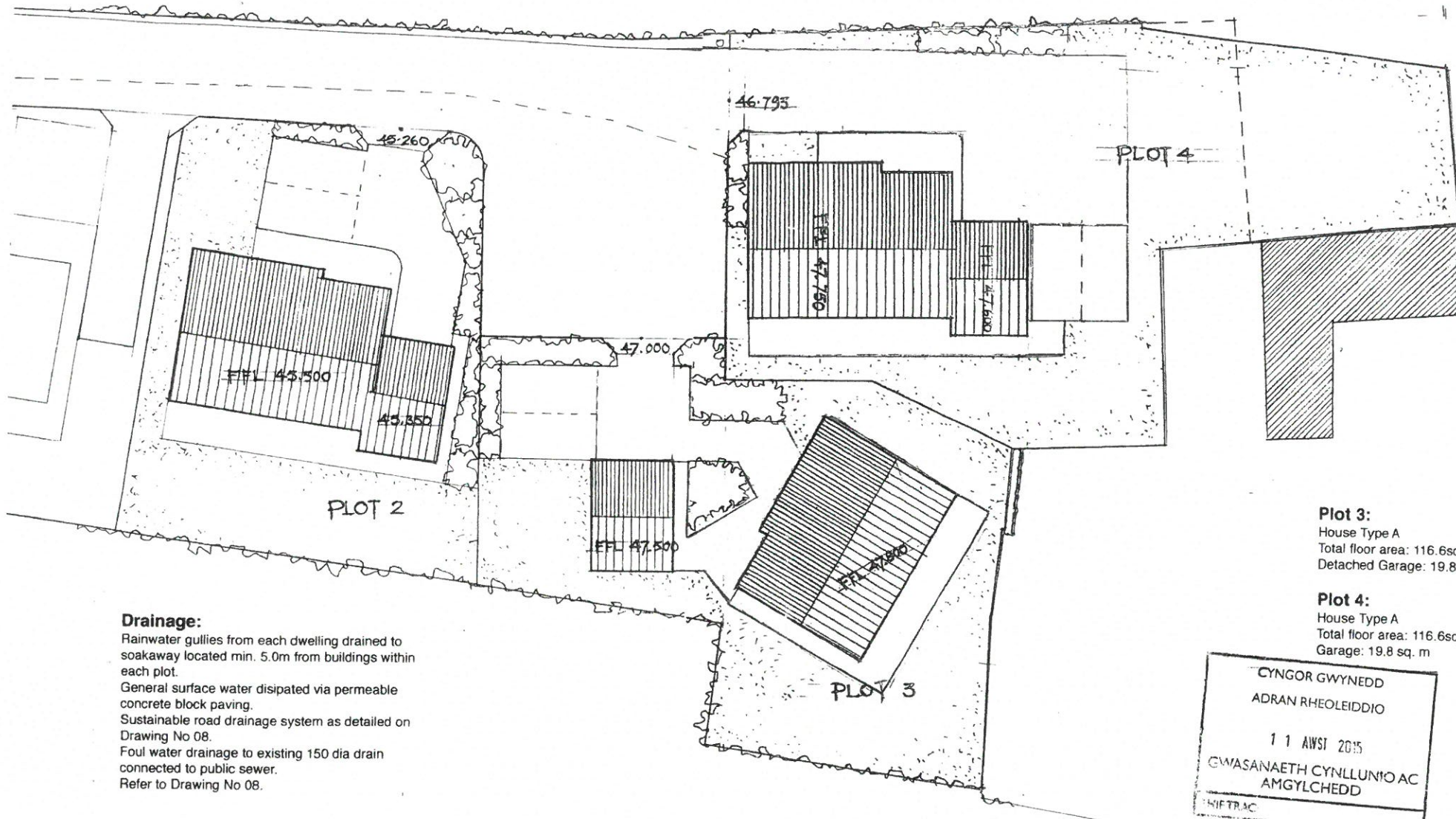


**Datbygiad Safle Capel Caersalem
 Lon Terfyn, Morfa Nefyn, Gwynedd**

Cais Cynllunio: C06D/0703/42/AM
 Caniatad dyddiedig: 09.08.2012

Rhif 05 - Cynllun Annedd B
 Drychiadau
 Graddfa 1:100 Dyddiad: 01 Mehefin 2015





Drainage:

Rainwater gullies from each dwelling drained to soakaway located min. 5.0m from buildings within each plot.
 General surface water disipated via permeable concrete block paving.
 Sustainable road drainage system as detailed on Drawing No 08.
 Foul water drainage to existing 150 dia drain connected to public sewer.
 Refer to Drawing No 08.

Finishes:

Roofs: Natural slate
 Ext walls: White render
 Sills: Natural slate
 Rain water goods: White UPVC
 Doors and windows: White UPVC

Landscaping:

Hedges to site boundaries retained but cut back
 Existing trees to be retained where possible
 Turfed gardens within each plot with planting beds as indicated on drawings.
 Paving of blue / grey permeable concrete blocks

Plot 3:
 House Type A
 Total floor area: 116.6sq. m
 Detached Garage: 19.8 sq. m

Plot 4:
 House Type A
 Total floor area: 116.6sq. m
 Garage: 19.8 sq. m

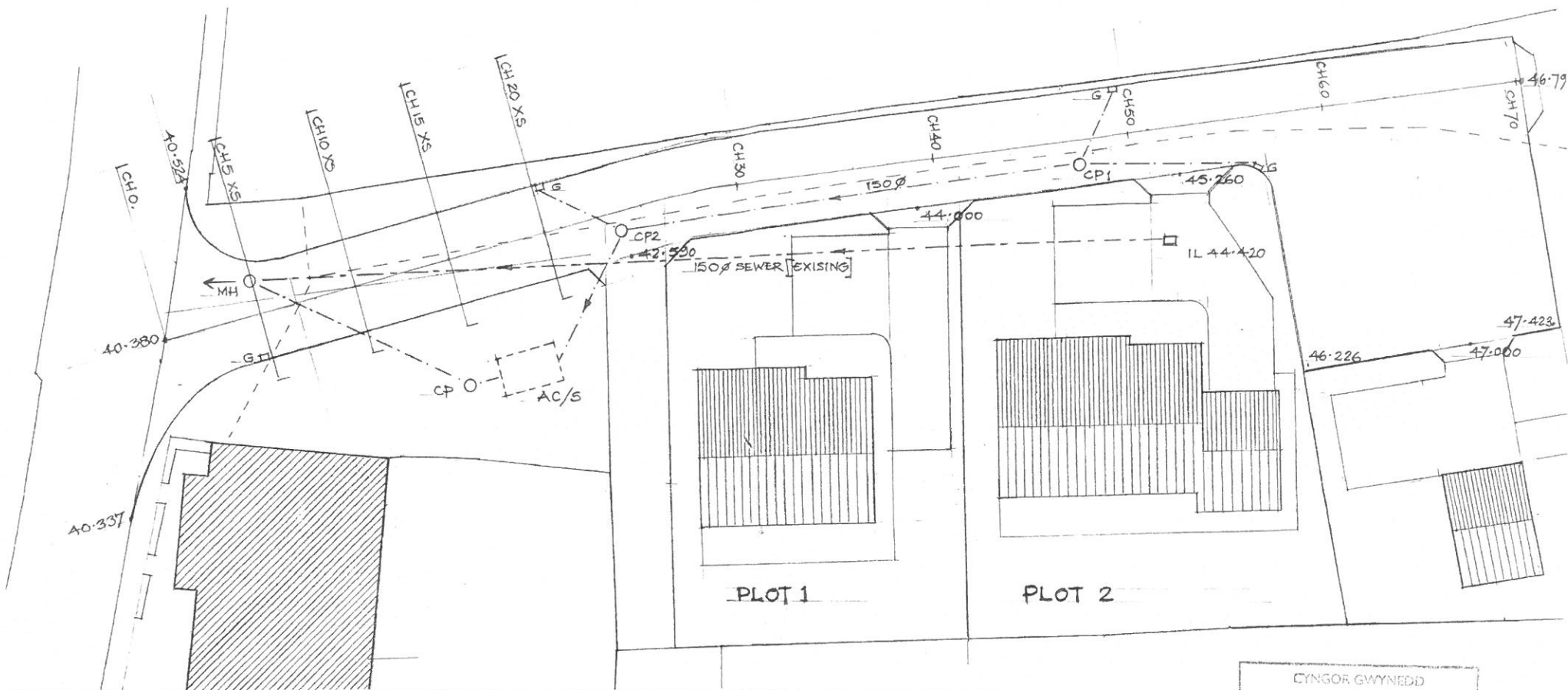
CYNGOR GWYNEDD
 ADRAN RHEOLEIDDIO
 11 AWST 2015
 GWASANAETH CYNLLUNIO AC
 AMGYLCHEDD
 RHIF TRAC

CYNLLUN GWYBODAETH
 REWYST 2015
 11/8/15
 M20

**Datbygiad Safle Capel Caersalem
 Lon Terfyn, Morfa Nefyn, Gwynedd**

Cais Cynllunio: C06D/0703/42/AM
 Cnatiad dyddiedig: 09.08.2012

Rhif 07A Cynllun Safle 1: 200
 Dyddiad: 03 Gorffennaf 2015



System Traenio Cynaliadwy: Gwybodaeth Gefndirol/Sustainable Drainage System: Background Information.

Drainage Run 1: CP1-CP2. Drainage Run 2: CP2-AC.
 CP1 (Ch.47) CL 44.660, IL 43.460 CP2 (Ch.24) CL 42.530, IL 41.330. AC(inlet) CL 42.400, IL 41.200.
 Te: 2 min., 1 in 1 year storm frequency, 0.6mm Roughness Coefficient.

Run	Level Diff' (m)	Length (m)	Gradient (1in)	Full Bore Vel (m/s)	Tf. (min)	Tc. (min)	Rate of Rainfall (mm/hr)	Impervious Area (sq.m)	Actual Rate of Flow (l/s)	Full Bore Capacity (l/s)	Pipe dia. (mm).
CP1-2	2.13	23	10.8	3.10	0.124	2.124	68.2	267	5.06	57	150
CP2-AC	0.13	7	54	1.39	0.084	2.208	67.6	411	7.72	25	150

Flow Attenuation Cells/Soakaway.

Storm Rainfall Rate: 50mm/hr. All drives, footways and paths to have permeable paving. Impervious Area Drained: 411 sq.m

Vol. of Attenuation Cells Required: 6.85 cu.m.

Example 1000mm x 500mm x 500mm Modular Geocellular System (Polypipe or equivalent). Geotextile outer lining of cells.

3.5m length, 2.0m wide, 1.0m (2 layer) depth to provide 7.0 cu.m capacity.

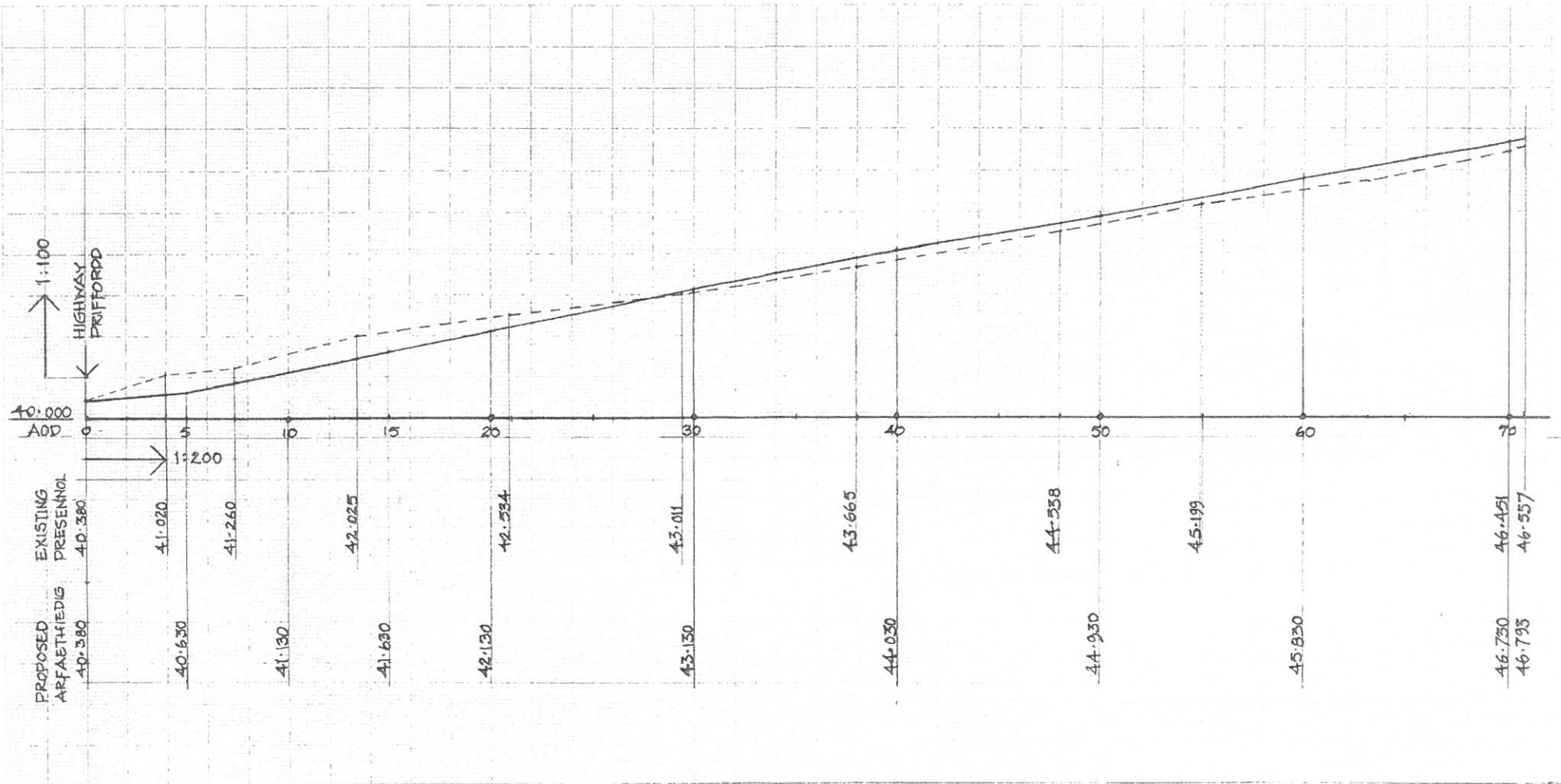
In-situ infiltration tests necessary to establish full soakaway capability and in order to completely avoid the need to discharge storm water from the development to the combined sewer (alternate connection from AC to sewerage system indicated on drawing).



**Datbygiad Safle Capel Caersalem
 Lon Terfyn, Morfa Nefyn, Gwynedd**

Cais Cynllunio: C06D/0703/42/AM
 Caniatad dyddiedig: 09.08.2012

Rhif 08 - Traeniau Dwr Glaw 1: 200
 Dyddiad: 16 Gorffennaf 2015

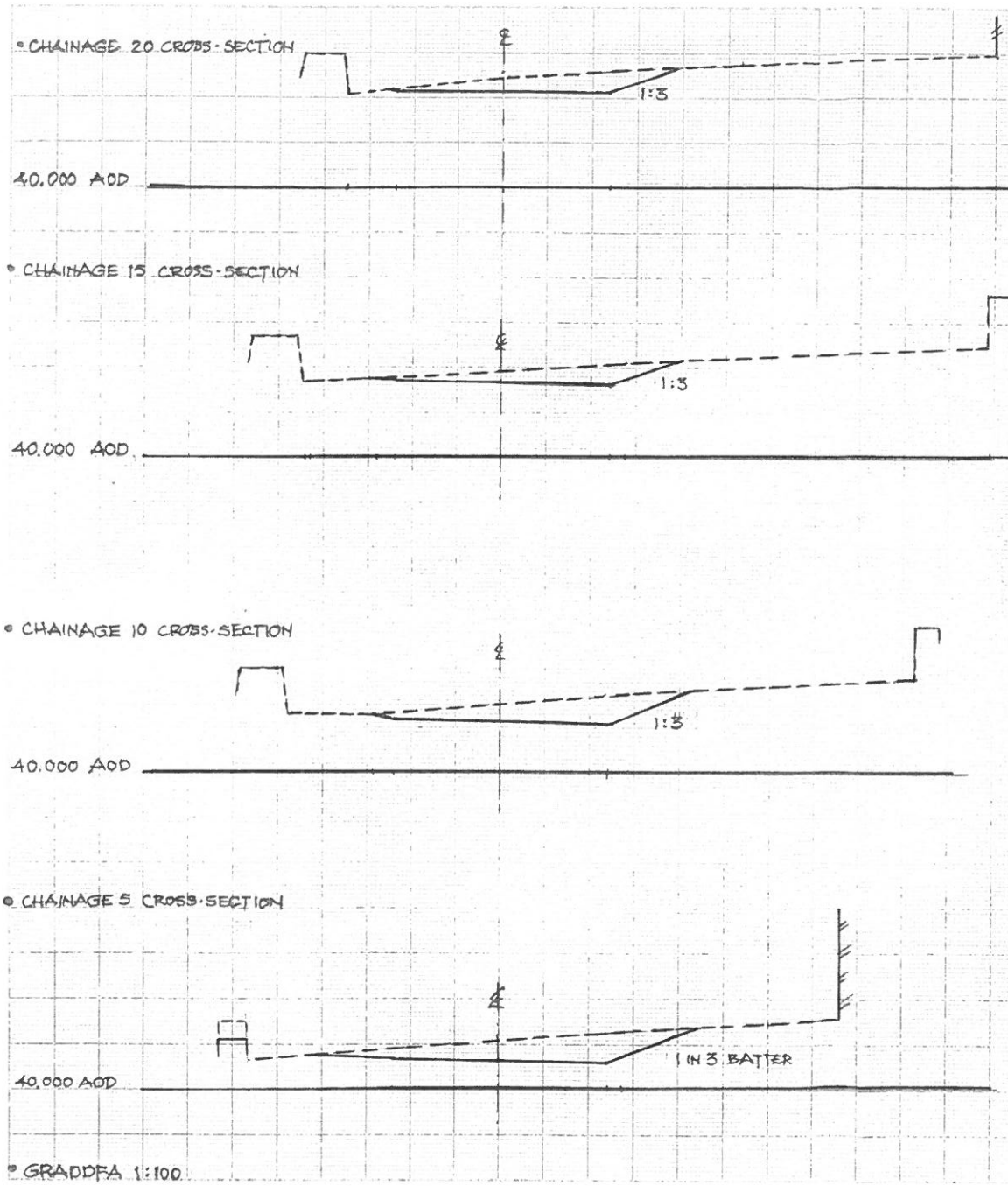


CYNGOR GWYNEDD
 ADUAN RHEOLEDDIO
 30 08 2012
 GWYBODAETHYD I'W GYMRAG
 ANGLYCHYRDL
 10/12/12

**Datbygiad Safle Capel Caersalem
 Lon Terfyn, Morfa Nefyn, Gwynedd**

Cais Cynllunio: C06D/0703/42/AM
 Caniatad dyddiedig: 09.08.2012

Rhif 09 - Lefelau y Ffordd
 Dyddiad: 16 Gorffennaf 2015



Estate Road Details

Chainage.	LHS	o/s (m)	C/L	o/s (m)	RHS	Max.m Grade.	Xfall	
0	40.524	7.2	40.380	9	40.337			Priffordd
5	40.690	2.4	40.630	2.4	40.570	5%	-2.50%	
10	41.190		41.130		41.070	10%		
15	41.690		41.630		41.570			
20	42.130		42.130		42.130		0%	
25	42.570		42.630		42.690		2.50%	
30	43.070		43.130		43.190			
35	43.520		43.580		43.640			
40	43.970		44.030		44.090			
45	44.420		44.480		44.540			
50	44.870		44.930		44.990	9%		
55	45.320		45.380	2.4	45.440		2.50%	
60	45.740		45.830	12.6	46.460		3.75%	
65	46.160		46.280	12.6	46.910		5.00%	
70	46.610		46.730	12.6	47.360			
70.7	46.673	2.4	46.793	12.6	47.423		5.00%	Plot4 Access
24			42.530		42.590			Track
39			43.940		44.000			Plot1 Access
53			45.200		45.260			Plot2 Access
57.4			45.596	12.6	46.226			Turninghead
66			46.370	12.6	47.000			Plot3 Garage



**Datbygiad Safle Capel Caersalem
Lon Terfyn, Morfa Nefyn, Gwynedd**

Cais Cynllunio: C06D/0703/42/AM
Caniatad dyddiedig: 09.08.2012

Rhif 10 - Croes Doriadau y Ffordd
Dyddiad: 16 Gorffennaf 2015