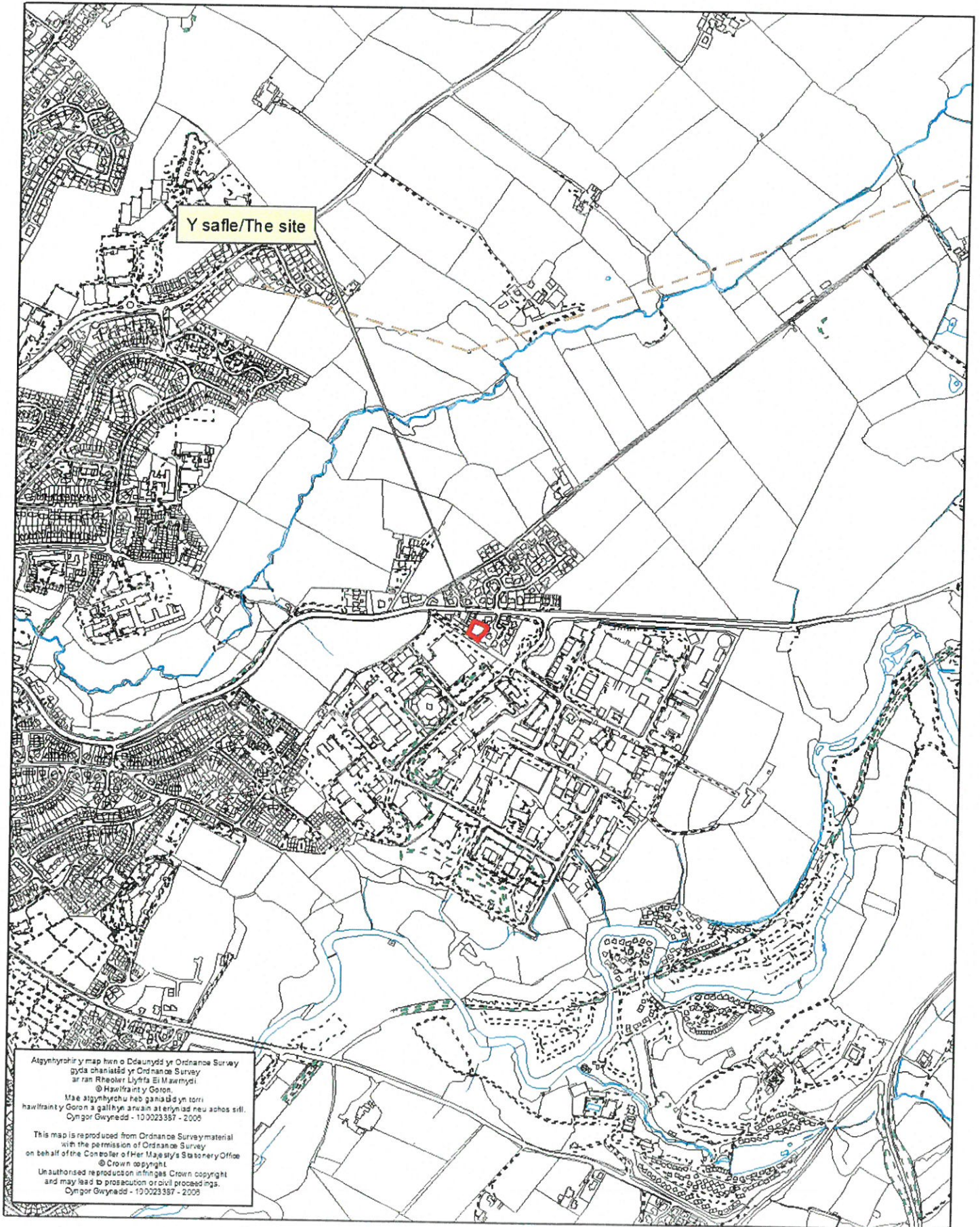


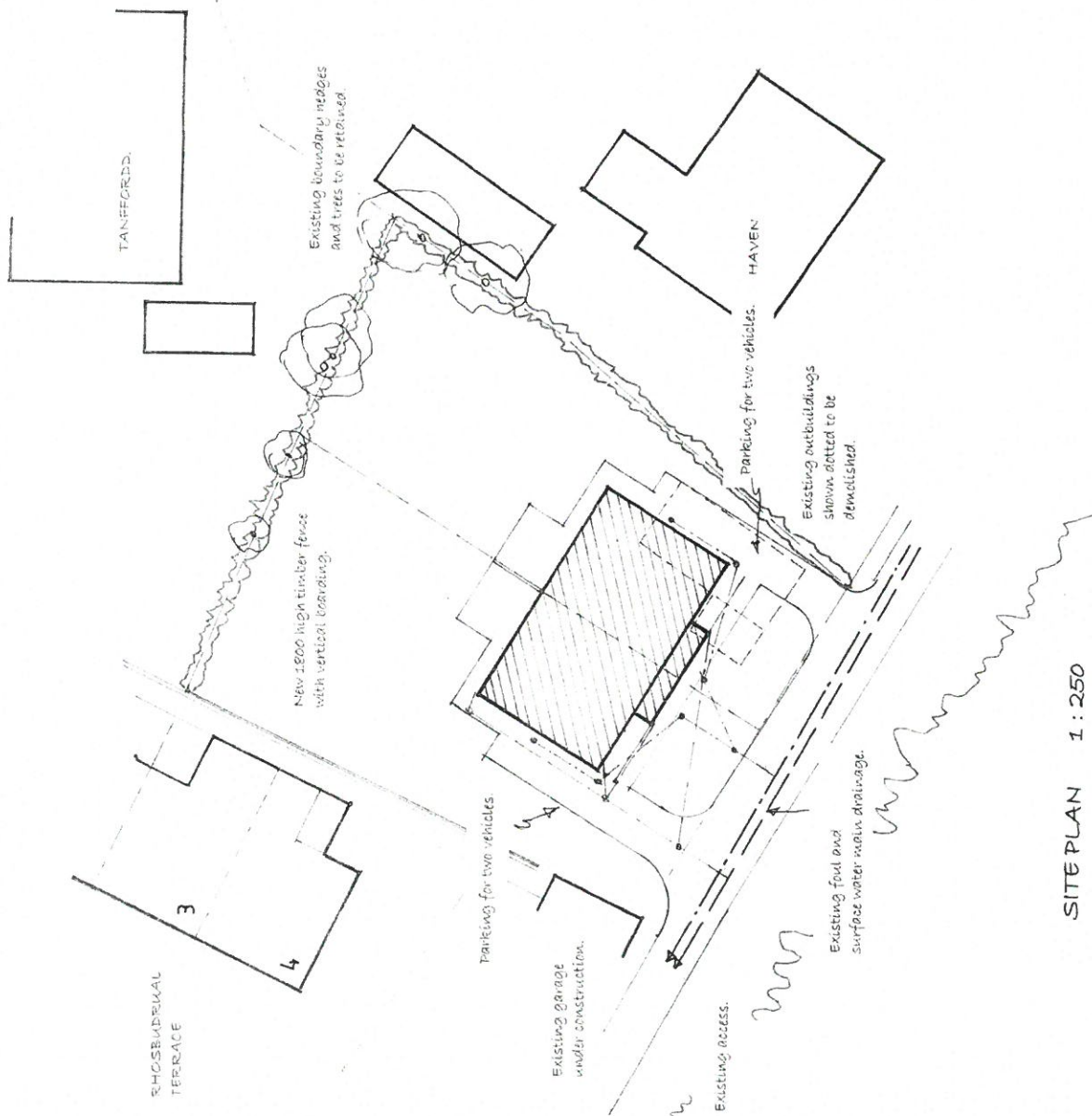
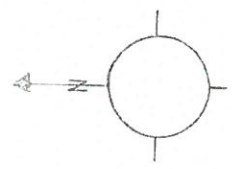
Rhif y Cais / Application Number : C17/0541/14/LL

Cynllun lleoliad ar gyfer adnabod y safle yn unig. Dim i raddfa.  
Location Plan for identification purposes only. Not to scale.

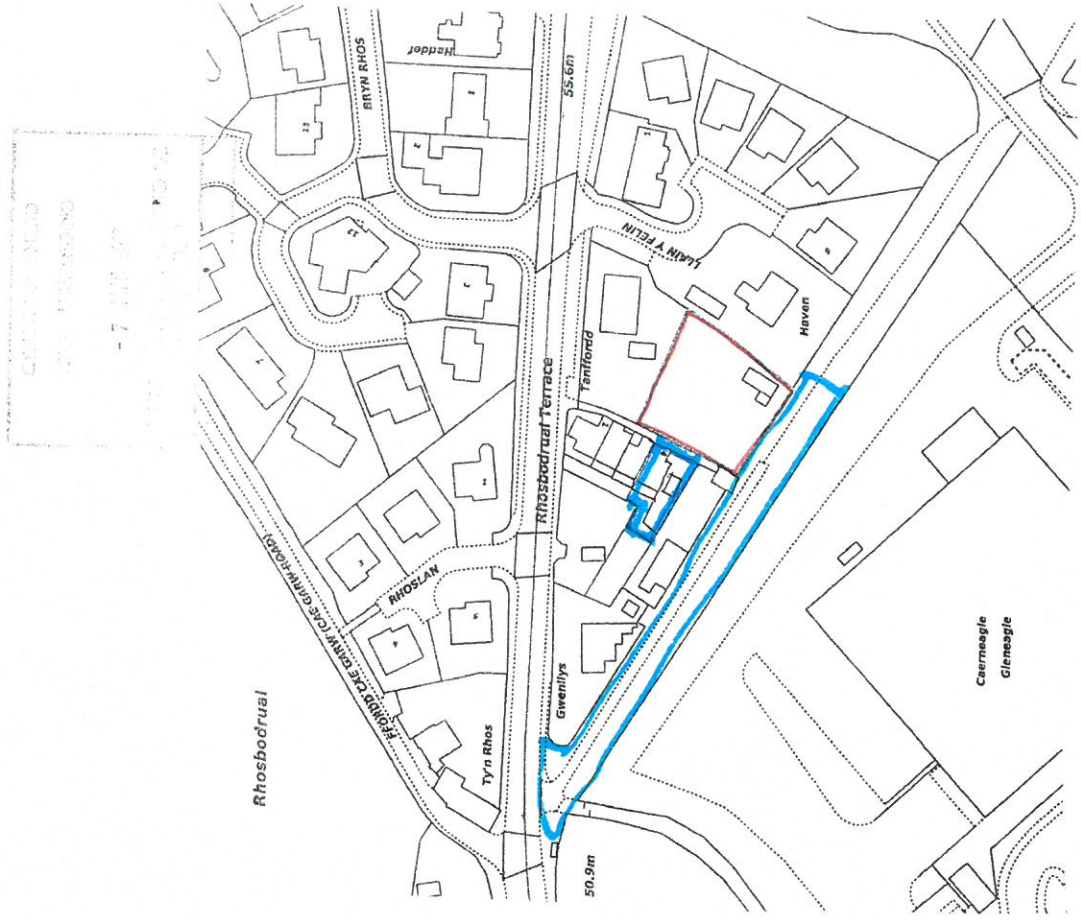


Agyntyrhoir y map hwn o Ddaunydd yr Ordnance Survey  
gyda chaniatâd yr Ordnance Survey  
ar ran Rheolwr Llyfrfa Eri Mawmyddi  
© Hawlfraint y Goron.  
Mae agynhyrchu heb ganiatâd yn torri  
hawlfraint y Goron a gallhyn arwain at erlyniad neu achos sifil.  
Cynllun Gwynedd - 10 0023387 - 2006

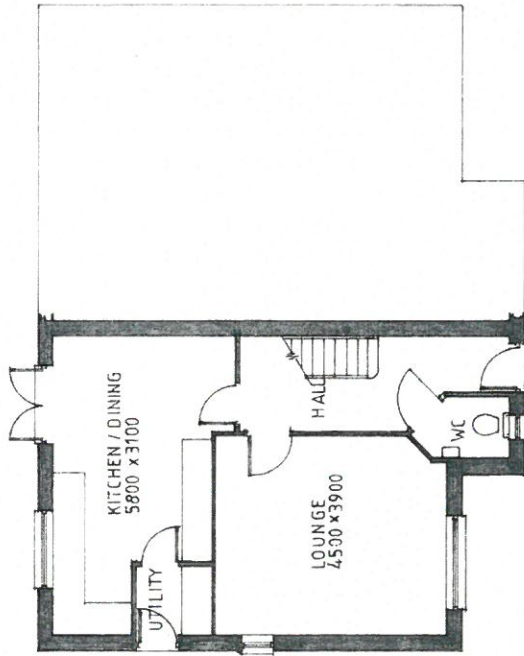
This map is reproduced from Ordnance Survey material  
with the permission of Ordnance Survey  
on behalf of the Controller of Her Majesty's Stationery Office  
© Crown copyright.  
Unauthorised reproduction infringes Crown copyright  
and may lead to prosecution or civil proceedings.  
Cynllun Gwynedd - 10 0023387 - 2006



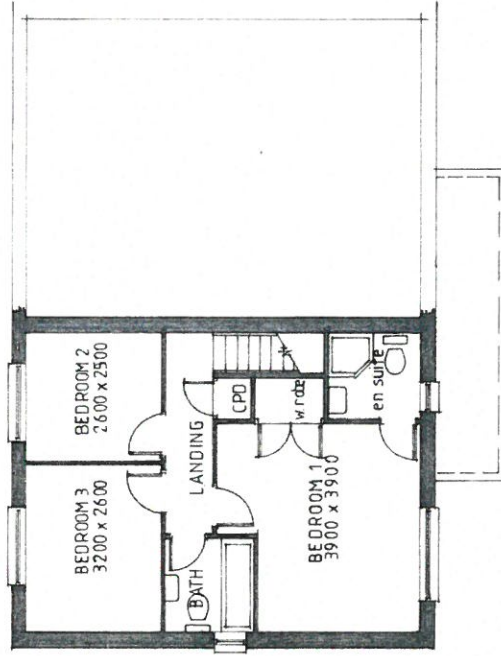
SITE PLAN 1 : 250



LOCATION PLAN 1 : 1250



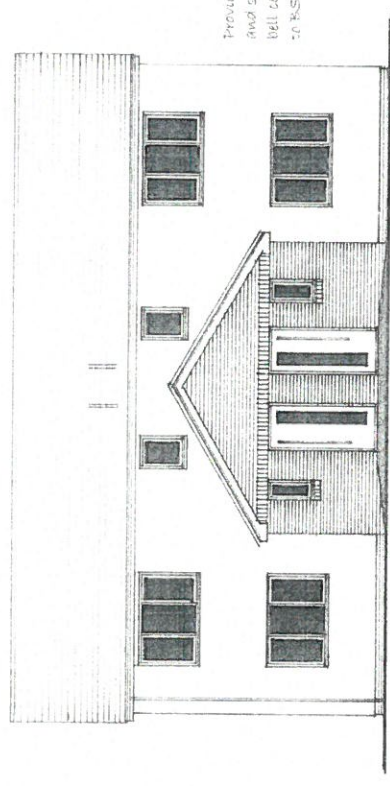
G. F. PLAN



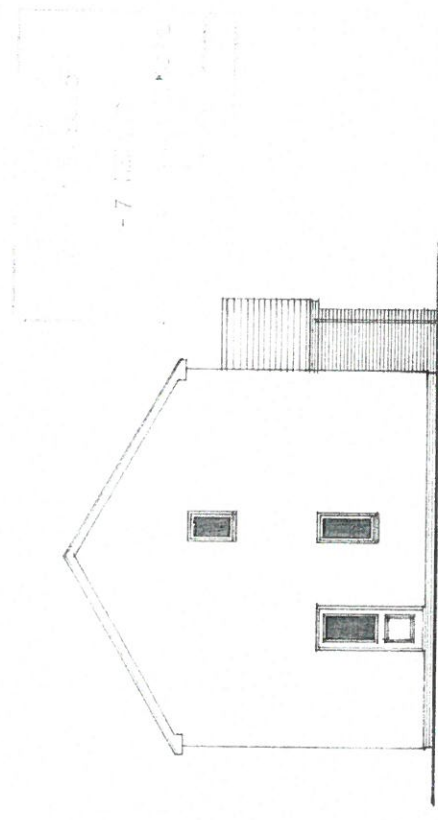
F. F. PLAN

1:100

100 SVP with  
bird cage cover



SOUTH WEST

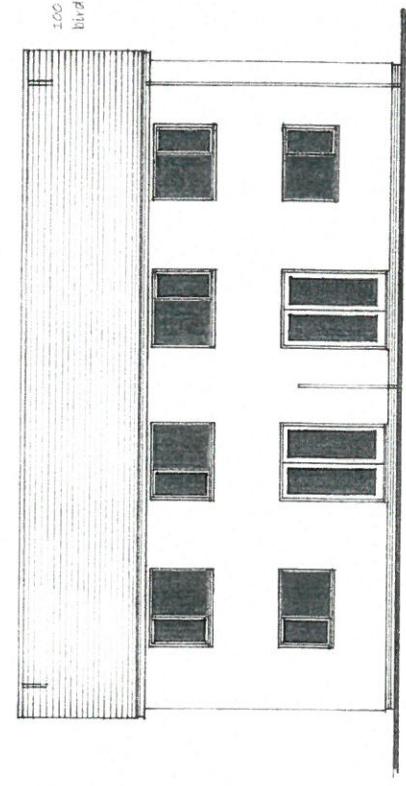


NORTH WEST

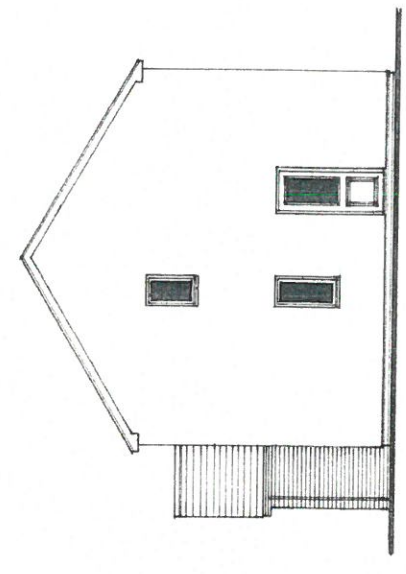
FINISHES:  
Roof  
Walls  
Windows  
Roofline  
Glazing

Wash slates with matching interlocking ridge tiles.  
All tiles to be mechanically fixed in accord with BS5534  
Shardax render with facing brickwork to bluish and entrance  
double glazed PVC-U with 24mm voids. U value: 1.60 W/m2 deg K  
smooth colored fascias, barge and soffits. 100 or PVC-U gutters  
and 65mm diam. m.pipes.  
All glazing to doors and all windows with a sill height less than  
200mm above ft. and windows within 300mm of doors to be glazed  
with heat marked safety glass complying with BS6206.

100 SVP with  
bird cage cover.



NORTH EAST



SOUTH EAST