







LEGEND

-  MINING SITE (MINERAL DEVELOPMENTS)
-  APPLICATION SITE BOUNDARY
-  EXTENT OF PERMITTED EXTRACTION
-  EXTENT OF PROPOSED EXTRACTION LIMIT
-  MAIN QUARRY TIP
-  COMPENSATION AREA




WELSH SLATE
Part of the Breerton Group



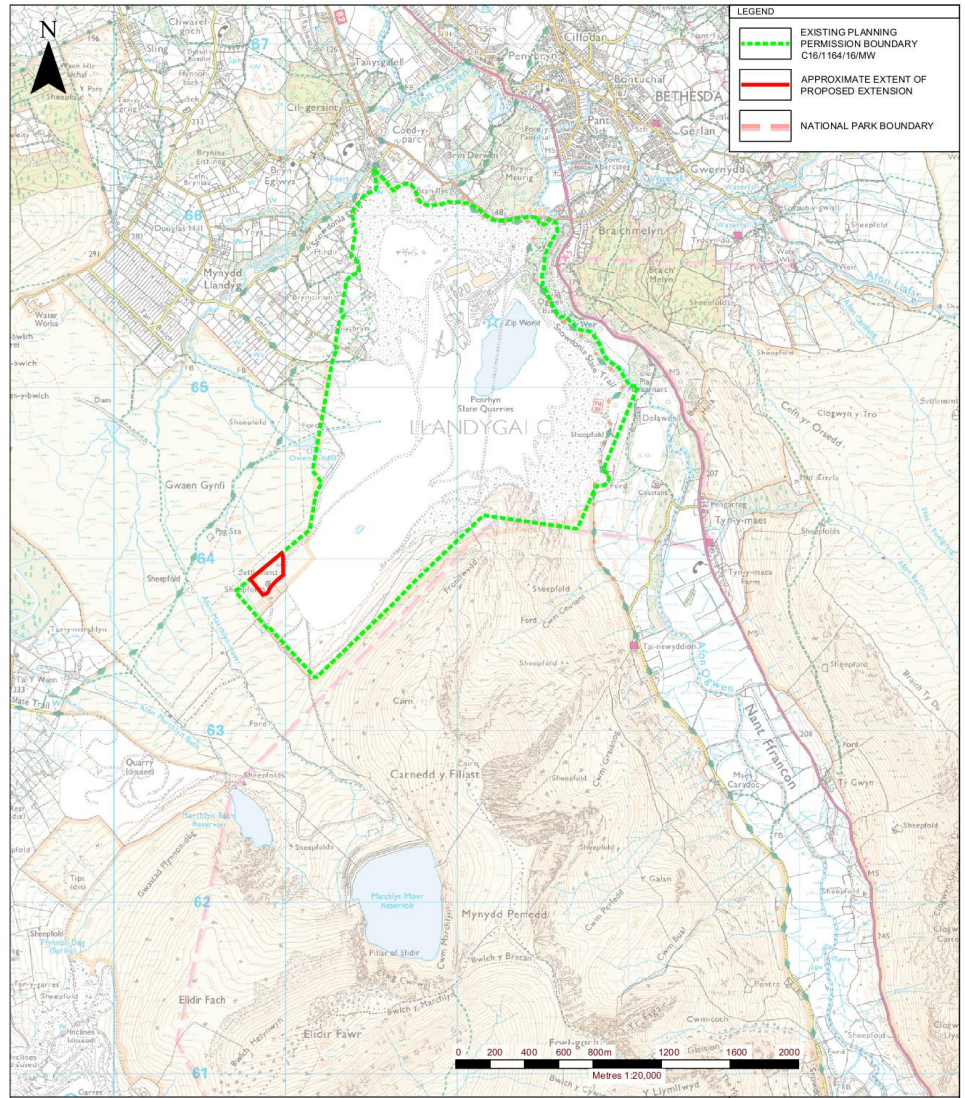
4/6 LOCHSIDE VIEW
EDINBURGH PARK
EDINBURGH
EH12 9DH
T: +44 (0)131 335 6830
www.slrconsulting.com

**PENRHYN QUARRY LATERAL
EXTENSION & TIPPING ARRANGEMENTS
ENVIRONMENTAL STATEMENT**

SITE PLAN
PQ 7/1

Scale: 1:12,500 @ A3 Date: MARCH 2022


06559.000217-1.0 Site Plan




403.06559.00021.12.PQ2/1.2 Site Location plan.dwg

© Crown copyright [and database rights] 2022 0100031673 Expires 16.03.2023

This drawing and its content are the copyright of SLR Consulting Ltd and may not be reproduced or amended except by prior written permission. SLR Consulting Ltd accepts no liability for any amendments made by other persons.



WELSH SLATE
Part of the Breecon Group



SLR
global environmental solutions

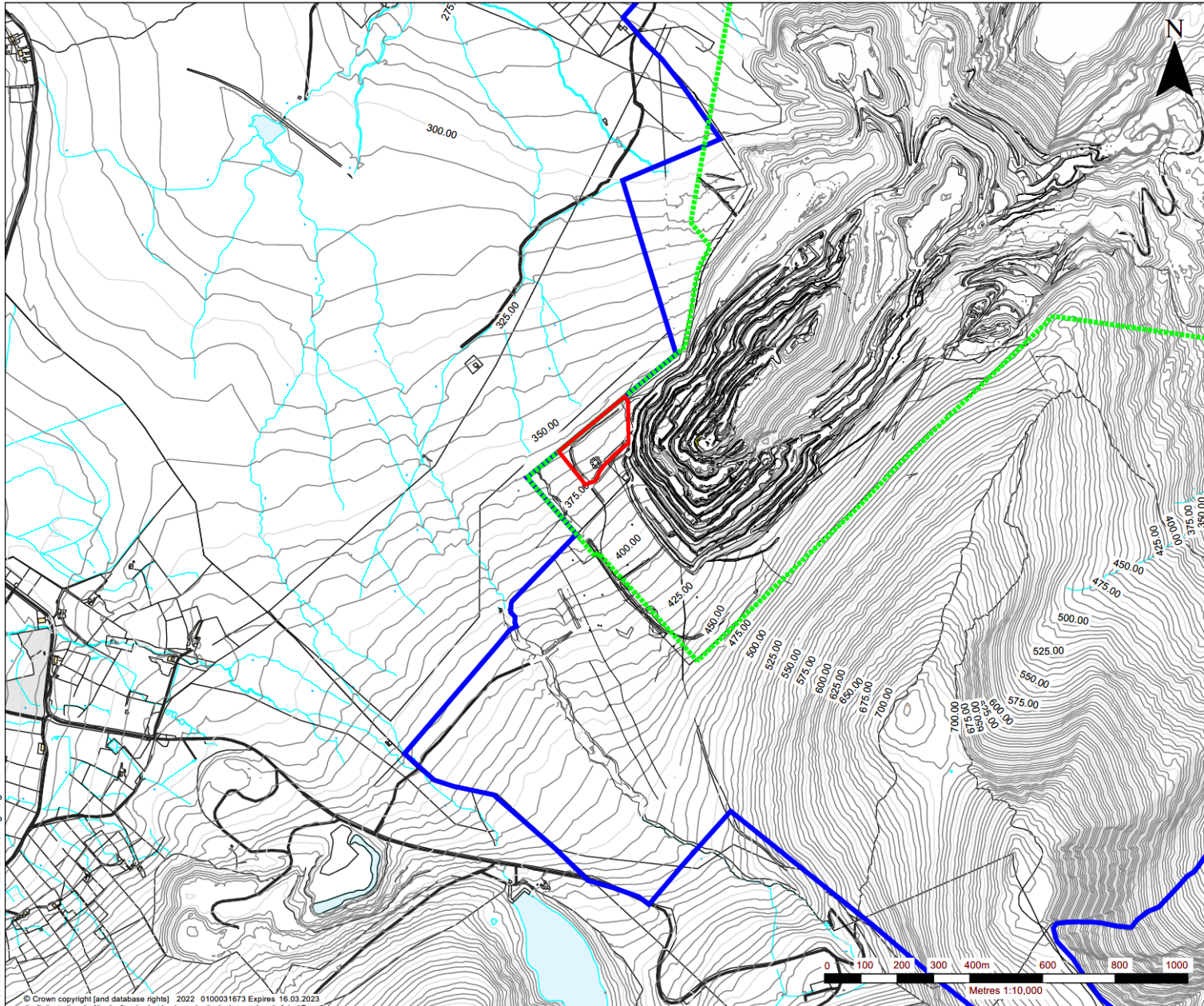
2nd and 3rd FLOORS
15 MIDDLE AVENUE
NOTTINGHAM
NG1 7DX
T: 0115 947280
F: 01159 751576
www.slrcorps.com

PENRHYN QUARRY
ENVIRONMENTAL STATEMENT
SITE LOCATION PLAN

PQ 2/1

Scale 1:20,000 @ A3	Date MARCH 2022
------------------------	--------------------




403.06599.00021.12.PQ2.2 Site Setting.dwg



NOTES

1. TERRAIN CONTOURS SHOWN IS A COMPOSITE OF TOPO SURVEY DATED 29.10.2018 AND OS TERRAIN 5 DTM DATA FOR CONTEXT.

LEGEND

	MINING SITE (MINERAL DEVELOPMENTS)
	APPLICATION SITE BOUNDARY
	COMPANY LANDHOLDING



WELSH SLATE
Part of the Breendon Group



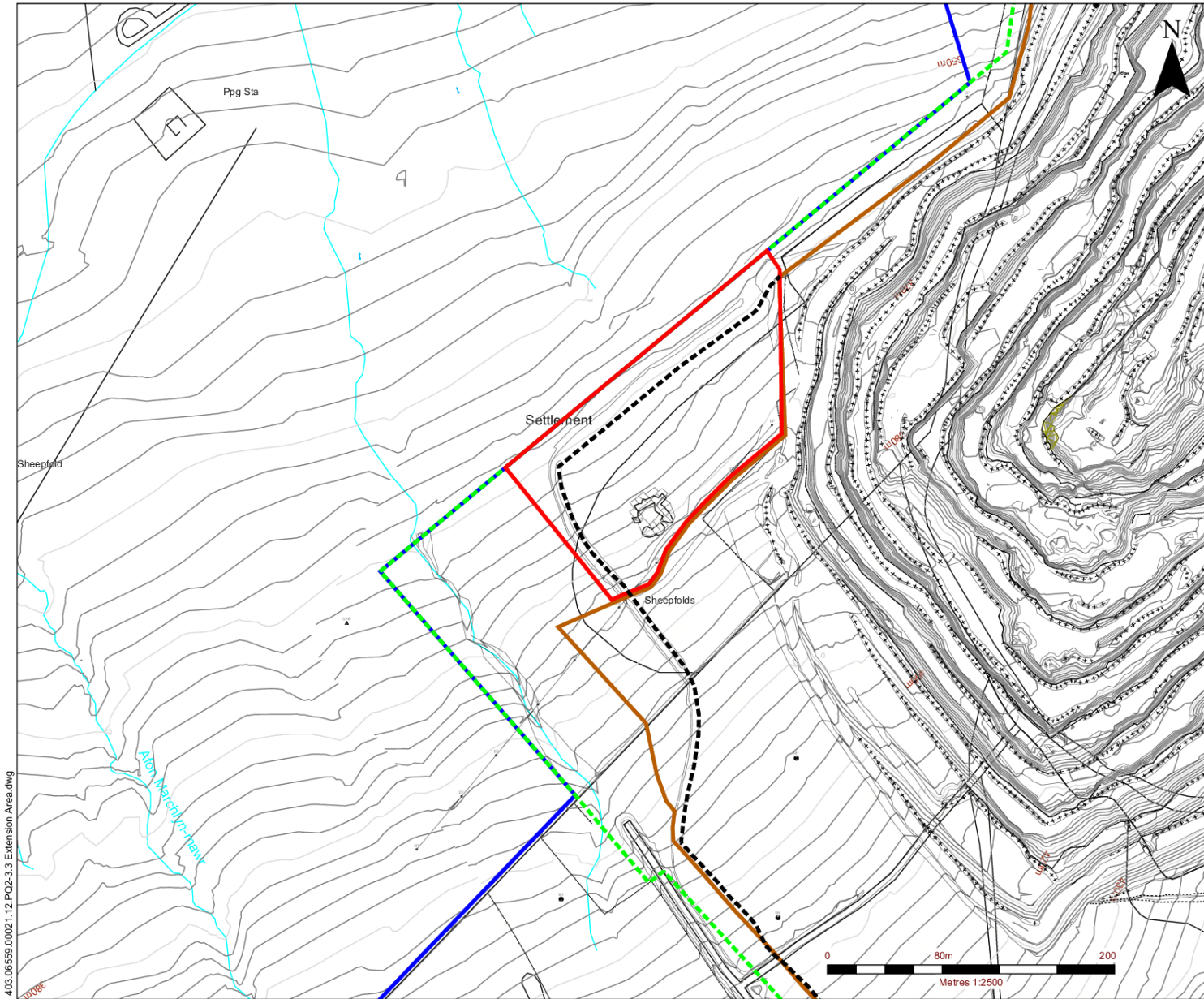
SLR
global environmental solutions

2nd and 3rd FLOORS
15 MIDDLE PAVEMENT
NOTTINGHAM
NG1 7DX
T: 01159 647280
F: 01159 751576
www.slrconsulting.com

PENRHYN QUARRY
ENVIRONMENTAL STATEMENT
SITE SETTING

PQ 2/2

Scale: 1:10,000 @ A3 Date: MARCH 2022



NOTES

1. TERRAIN CONTOURS SHOWN IS A COMPOSITE OF TOPO SURVEY DATED 29.10.2018 AND OS TERRAIN 5 DTM DATA FOR CONTEXT.
2. EXTENT OF PERMITTED EXTRACTION IS TAKEN FROM SLR CONSULTING LIMITED DRAWING REF: 02491.16.76.77.78. PENRHYN WIDENING EXTENSION 120502.DWG, DRAWING NUMBER: P7/78; REVISION A DATED: MARCH 2012.

LEGEND

	MINING SITE (MINERAL DEVELOPMENTS)
	APPLICATION SITE BOUNDARY
	COMPANY LANDHOLDING
	EXTENT OF PERMITTED EXTRACTION (SEE NOTE 2.)
	EXTENT OF PROPOSED EXTRACTION LIMIT

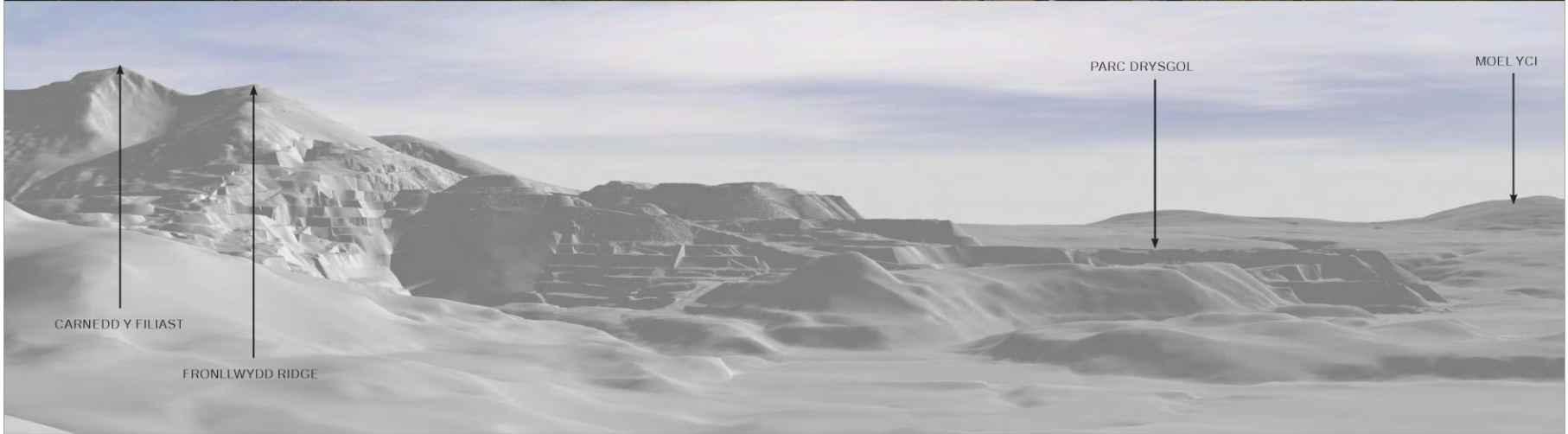


SLR global environmental solutions
 2nd and 3rd FLOORS
 15 MIDDLE PARADEMENT
 NOTTINGHAM
 NG1 7DX
 T: 01159 647200
 F: 01159 751576
 www.slrconsulting.com

PENRHYN QUARRY
 ENVIRONMENTAL STATEMENT
 EXTENSION AREA
PQ 2/3

Scale: 1:2500 @ A3 Date: MARCH 2022

403.06559.0002.1.12.PQ2-3.3 Extension Area.dwg



VIEWPOINT 1 - GERLAN ROAD, GERLAN, BETHESDA

GRID REFERENCE: 263104.000, 366523.000

ELEVATION: Circa 203.000m AoD

DIRECTION: SOUTH WEST

NOTES

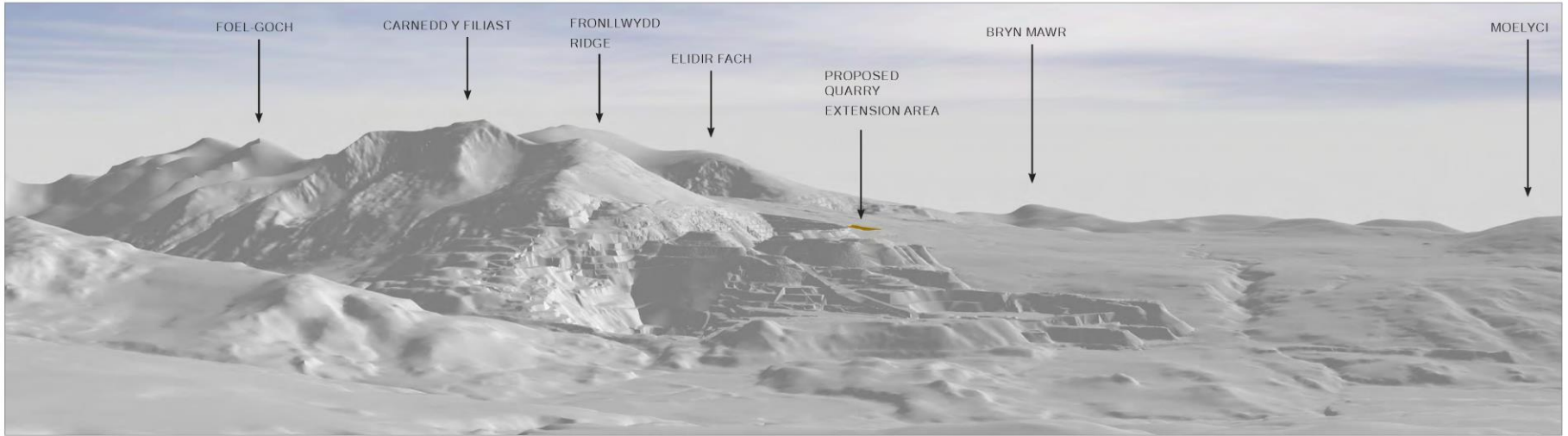
THE PHOTOGRAPHS WITHIN THIS SHEET HAVE BEEN SCALED TO MATCH THE EQUIVALENT VIEW OF THE HUMAN EYE, WHEN PRINTED OUT AT A3 AND VIEWED AT A DISTANCE OF 300MM.

LEGEND:



PROPOSED EXTENSION AREA (NOT VISIBLE)

 <small>Part of the Breecon Group</small>	PENRHYN QUARRY NORTH WESTERN EXTENSION LANDSCAPE AND VISUAL IMPACT ASSESSMENT	
	VIEWPOINT 1 PQ - 6 / 6	
 <small>global environmental solutions</small>	<small>2nd Floor Hermes House Hulsworth Park Osan Business Park Strassbury SY3 5JQ T. 01743 239200 www.slrconsulting.com</small>	scale AS SHOWN
		Date FEBRUARY 2022



VIEWPOINT 2 - MOEL FABAN

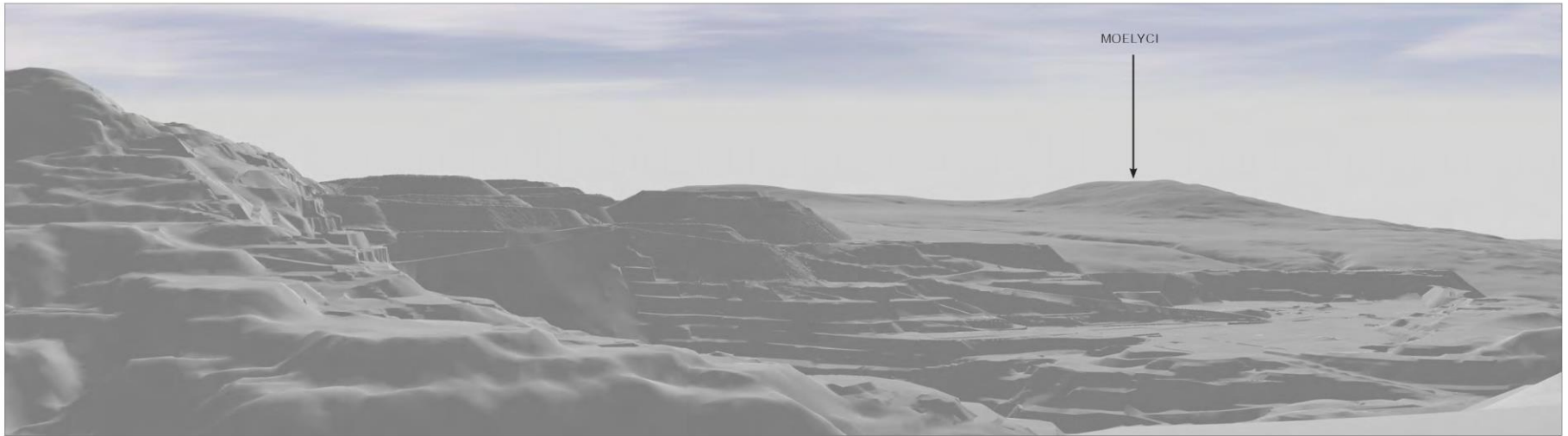
GRID REFERENCE: 263394.000, 367907.000
ELEVATION: Circa 400.950m AoD
DIRECTION: SOUTH WEST

NOTES
 THE PHOTOGRAPHS WITHIN THIS SHEET HAVE BEEN SCALED TO MATCH THE EQUIVALENT VIEW OF THE HUMAN EYE, WHEN PRINTED OUT AT A3 AND VIEWED AT A DISTANCE OF 300MM.

LEGEND:

 PROPOSED EXTENSION AREA

 <small>Part of the Breecon Group</small>	PENRHYN QUARRY NORTH WESTERN EXTENSION LANDSCAPE AND VISUAL IMPACT ASSESSMENT VIEWPOINT 2 PQ - 6 / 7	
	 <small>global environmental solutions</small>	<small>2nd Floor Hermes House Hulsworth Park, Cwm Business Park, Strwsbury SY3 5JQ T. 01743 239200 www.slrconsulting.com</small>
		<small>Date</small> FEBRUARY 2022



VIEWPOINT 3 - CEFN YR ORSTEDD

GRID REFERENCE: 263356.00, 365225.000

ELEVATION: Circa 322.267m AoD

DIRECTION: WEST

NOTES

THE PHOTOGRAPHS WITHIN THIS SHEET HAVE BEEN SCALED TO MATCH THE EQUIVALENT VIEW OF THE HUMAN EYE, WHEN PRINTED OUT AT A3 AND VIEWED AT A DISTANCE OF 300MM.

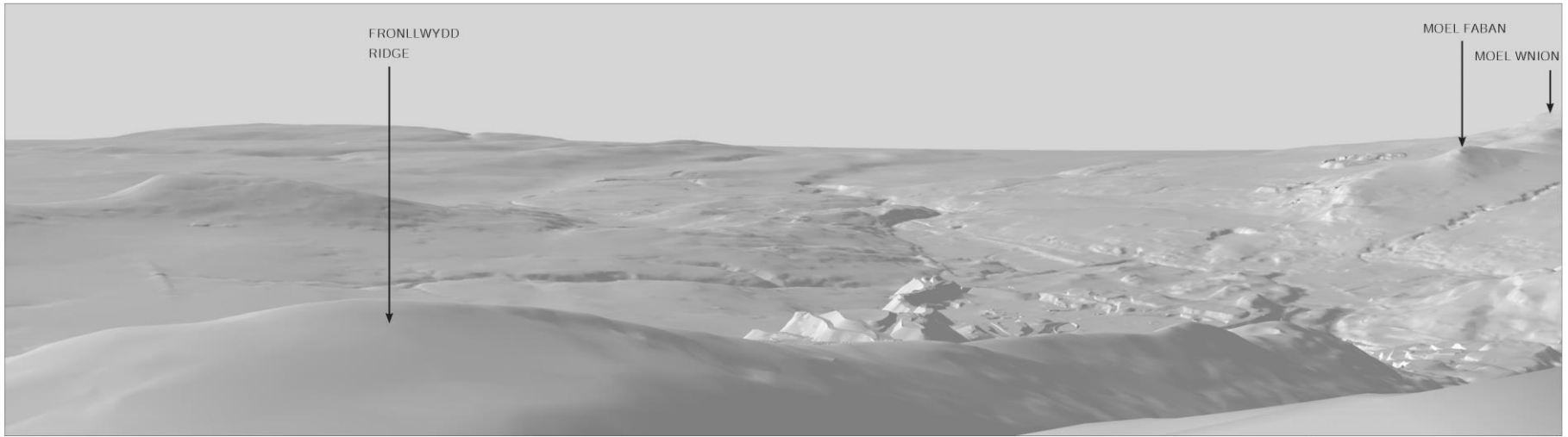
LEGEND:



PROPOSED EXTENSION AREA (NOT VISIBLE)

 <small>Part of the Breidden Group</small>	PENRHYN QUARRY NORTH WESTERN EXTENSION LANDSCAPE AND VISUAL IMPACT ASSESSMENT	
	VIEWPOINT 3 PQ - 6 / 8	
 <small>global environmental solutions</small>	<small>2nd Floor Hermes House Halesworth Park, Cwm Business Park, Strreawberry SY3 5JG T. 01743 239200 www.slrconsulting.com</small>	scale AS SHOWN
		Date FEBRUARY 2022

TEXT



VIEWPOINT 4 - RIDGE AT CARNEDD Y FILIAST

GRID REFERENCE: 262050.000, 362781.000

ELEVATION: Circa 819.675m AoD

DIRECTION: NORTH

NOTES

THE PHOTOGRAPHS WITHIN THIS SHEET HAVE BEEN SCALED TO MATCH THE EQUIVALENT VIEW OF THE HUMAN EYE, WHEN PRINTED OUT AT A3 AND VIEWED AT A DISTANCE OF 300MM.

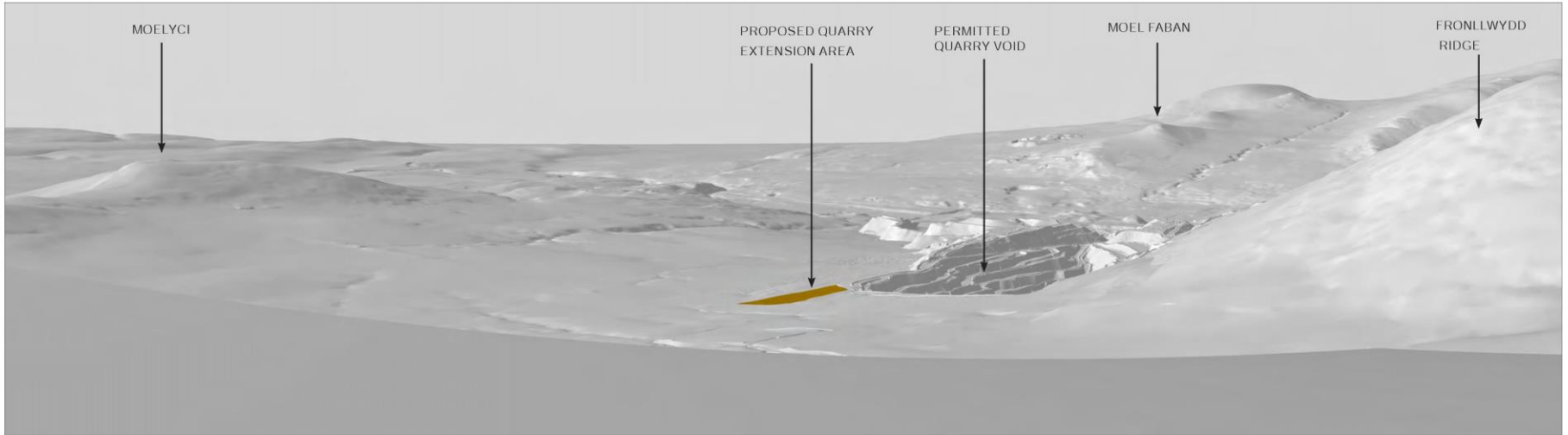
LEGEND:



PROPOSED EXTENSION AREA (NOT VISIBLE)

 <small>Part of the Breecon Group</small>	PENRHYN QUARRY NORTH WESTERN EXTENSION LANDSCAPE AND VISUAL IMPACT ASSESSMENT VIEWPOINT 4 PQ - 6 / 9	
	 <small>global environmental solutions</small>	<small>2nd Floor Hermes House Hubsorth Park Cwm Business Park Streetway SY3 5JL T. 01743 239200 www.slrconsulting.com</small>

TEXT



VIEWPOINT 5 - RIDGE AT ELIDIR FACH

GRID REFERENCE: 260531.000, 362068.000

ELEVATION: Circa 739.711m AoD

DIRECTION: NORTH

NOTES

THE PHOTOGRAPHS WITHIN THIS SHEET HAVE BEEN SCALED TO MATCH THE EQUIVALENT VIEW OF THE HUMAN EYE, WHEN PRINTED OUT AT A3 AND VIEWED AT A DISTANCE OF 300MM.

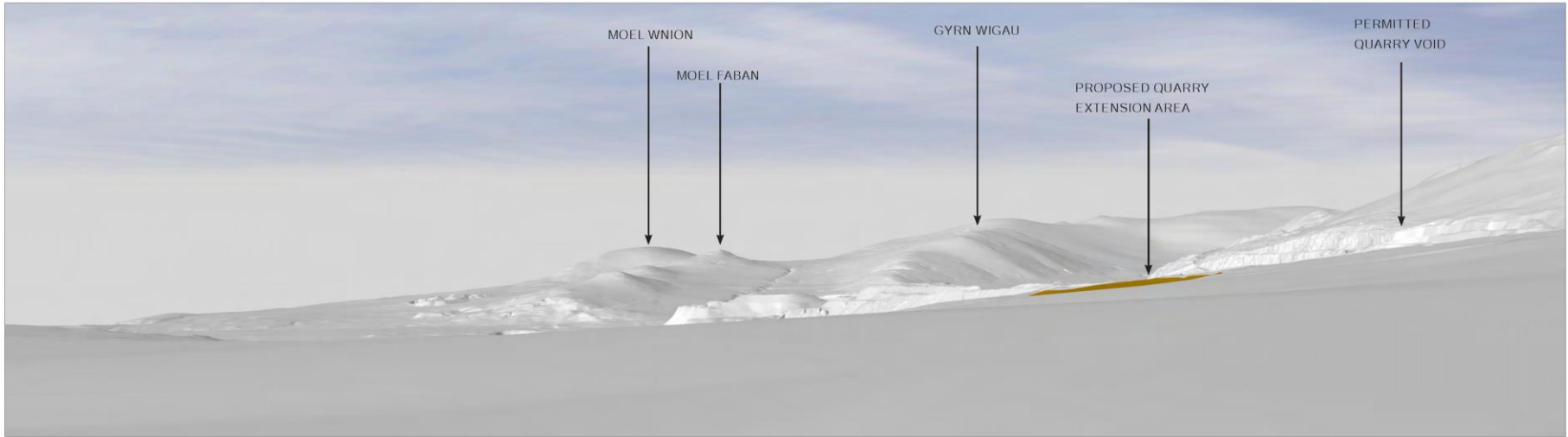
LEGEND:



PROPOSED EXTENSION AREA

 <small>Part of the Breecon Group</small>	PENRHYN QUARRY NORTH WESTERN EXTENSION LANDSCAPE AND VISUAL IMPACT ASSESSMENT VIEWPOINT 5 PQ - 6 / 10	
	 <small>global environmental solutions</small>	<small>2nd Floor Hermes House Hulsworth Park Osan Business Park Strreawberry SY3 5JQ T. 01743 239200 www.slrconsulting.com</small>

Date
FEBRUARY 2022



VIEWPOINT 6 - PROW GWAEN GYNFI

GRID REFERENCE: 260089.000, 363409.000

ELEVATION: Circa 360.640m AoD

DIRECTION: EAST

NOTES

THE PHOTOGRAPHS WITHIN THIS SHEET HAVE BEEN SCALED TO MATCH THE EQUIVALENT VIEW OF THE HUMAN EYE, WHEN PRINTED OUT AT A3 AND VIEWED AT A DISTANCE OF 300MM.

LEGEND:



PROPOSED EXTENSION AREA

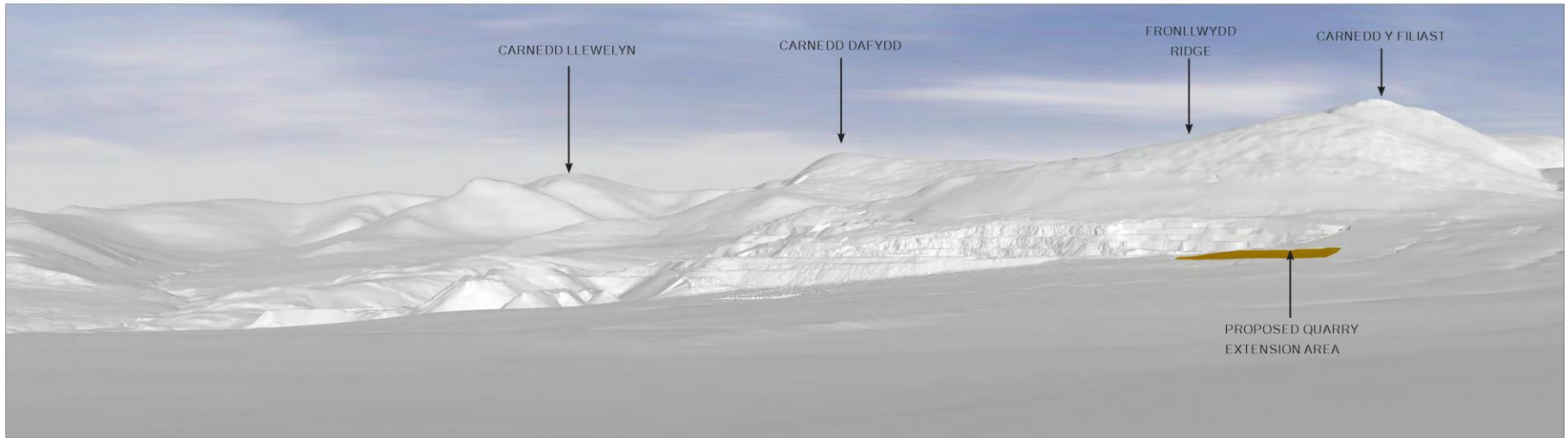
WELSH SLATE
Part of the Breidden Group

SLR
global environmental solutions

2nd Floor Hermes House
Halsworth Park
Osau Business Park
Streebway
SY3 5JQ
T. 01743 239200
www.slrconsulting.com

PENRHYN QUARRY
NORTH WESTERN EXTENSION
LANDSCAPE AND VISUAL
IMPACT ASSESSMENT
VIEWPOINT 6
PQ - 6 / 11

scale	Date
AS SHOWN	FEBRUARY 2022



VIEWPOINT 7 - PEN Y BWLCH

GRID REFERENCE: 259342.000, 364976.000

ELEVATION: Circa 330.274m AoD

DIRECTION: SOUTH EAST

NOTES

THE PHOTOGRAPHS WITHIN THIS SHEET HAVE BEEN SCALED TO MATCH THE EQUIVALENT VIEW OF THE HUMAN EYE, WHEN PRINTED OUT AT A3 AND VIEWED AT A DISTANCE OF 300MM.

LEGEND:



PROPOSED EXTENSION AREA

 <small>Part of the Brecon Group</small>	PENRHYN QUARRY NORTH WESTERN EXTENSION LANDSCAPE AND VISUAL IMPACT ASSESSMENT	
	VIEWPOINT 7 PQ- 6 / 12	
 <small>global environmental solutions</small>	<small>2nd Floor Hermes House Hubsorth Park Osan Business Park Strreawary SY3 5JL T. 01743 239200 www.slrconsulting.com</small>	scale AS SHOWN
		Date FEBRUARY 2022



VIEWPOINT 8B - PROW TAN Y BWLCH-GEFNAN

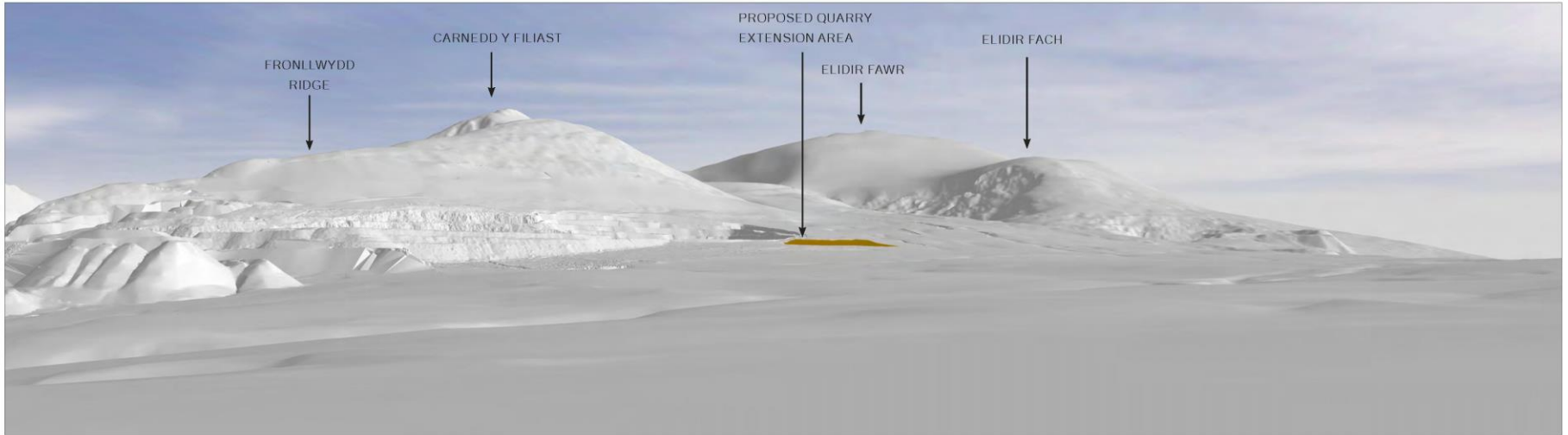
GRID REFERENCE: 260910.000, 364972.000
ELEVATION: Circa 288.472m AoD
DIRECTION: SOUTH

NOTES
 THE PHOTOGRAPHS WITHIN THIS SHEET HAVE BEEN SCALED TO MATCH THE EQUIVALENT VIEW OF THE HUMAN EYE, WHEN PRINTED OUT AT A3 AND VIEWED AT A DISTANCE OF 300MM.

LEGEND:

 PROPOSED EXTENSION AREA

 <small>Part of the Breckon Group</small>	PENRHYN QUARRY NORTH WESTERN EXTENSION LANDSCAPE AND VISUAL IMPACT ASSESSMENT VIEWPOINT 8 PQ - 6 / 13					
	 <small>global environmental solutions</small>	<small>2nd Floor Hermes House Halesworth Park, Cloan Business Park, Streebushy SY3 5JQ T. 01743 239200 www.slrconsulting.com</small>	<table border="1"> <tr> <td>scale</td> <td>Date</td> </tr> <tr> <td>AS SHOWN</td> <td>FEBRUARY 2022</td> </tr> </table>	scale	Date	AS SHOWN
scale	Date					
AS SHOWN	FEBRUARY 2022					



VIEWPOINT 9B - BRYN EGLWYS

GRID REFERENCE: 260534.000, 366110.000
ELEVATION: Circa 106.000m AoD
DIRECTION: SOUTH EAST

NOTES
 THE PHOTOGRAPHS WITHIN THIS SHEET HAVE BEEN SCALED TO MATCH THE EQUIVALENT VIEW OF THE HUMAN EYE, WHEN PRINTED OUT AT A3 AND VIEWED AT A DISTANCE OF 300MM.

LEGEND:

 PROPOSED EXTENSION AREA

 Part of the Breckon Group	PENRHYN QUARRY NORTH WESTERN EXTENSION LANDSCAPE AND VISUAL IMPACT ASSESSMENT VIEWPOINT 9 PQ - 6 / 14		
	 global environmental solutions	2nd Floor Hermes House Hulsorth Park Cwm Business Park Strreawbury SY3 5JQ T. 01743 239200 www.slrconsulting.com	scale AS SHOWN





